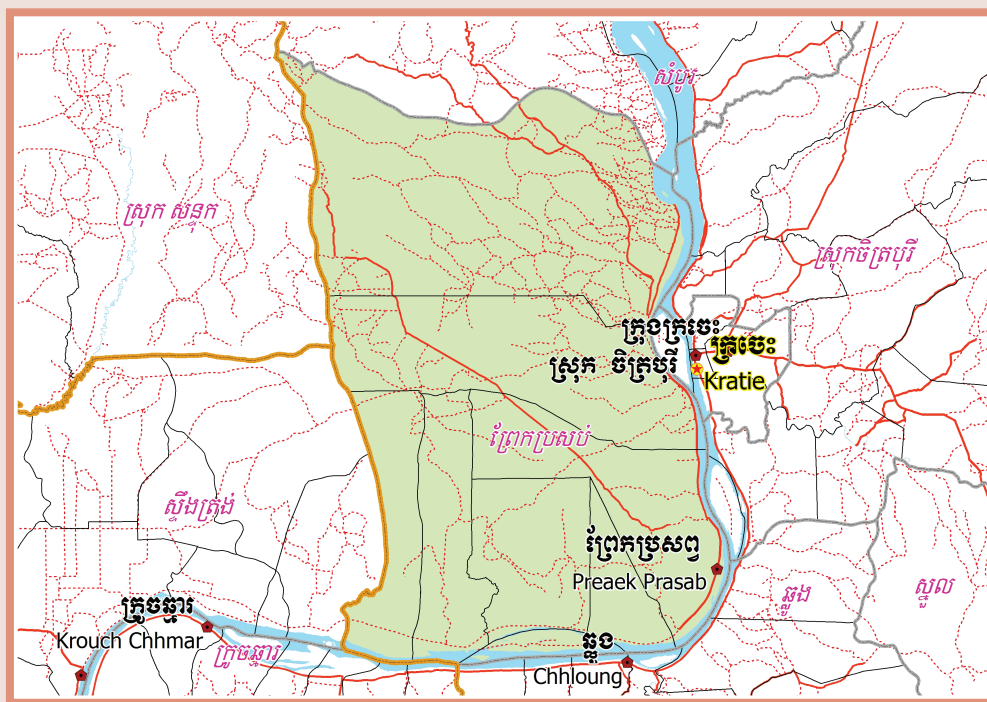


A decorative horizontal line featuring a central flower-like motif flanked by symmetrical, flowing scrollwork or leaf-like patterns on both sides.



October 2009

Preaek Prasab District Data Book 2009

District Code Nr: 1003

Kracheh Province

Table of Contents

List of Abbreviations	i
Glossary.....	ii
Preface	vi
Introduction	vii
SECTION A: GEOGRAPHY	1
1 Administration and Infrastructure.....	3
2 Land Use and Natural Resources.....	5
3 Geography	7
3.1 Land Area	7
3.2 Distances between Offices	7
SECTION B: DISTRICT PROFILE	9
1 General Information	11
1.1 Population of the District.....	11
1.2 Occupations	12
1.3 Property	14
2 Infrastructure and Economy.....	16
2.1 Roads in meters over 3 years.....	16
2.2 Sewerage Pipes in meters over 3 years.....	16
2.3 Drainage and Bridges	16
2.4 Services in the District	16
2.5 Agriculture.....	17
3 Social Aspects	28
3.1 Education	28
3.2 Health.....	33
3.3 Water and Sanitation	35
3.4 Vulnerable groups.....	39
3.5 Migration	41
4 Natural Resources and Environment (NRE).....	43
4.1 Families involved with NRE issues over 3 years	43
4.2 Percentage of Families involved with Natural Resource issues, by Commune, for 2008	43
4.3 Percentage Houses with access to Garbage collection and Families affected by environmental Pollution, by Commune, for 2008	43
4.4 Percentage Families using chemical Fertilizer and chemical Pesticides, by Commune, for 2008 ..	43
5 Administration and Security	44

5.1	Birth Registration across 3 years.....	44
5.2	Number of unregistered Infants born in 2008, by Commune	44
5.3	Registered criminal Cases over 3 years	44
5.4	Registered criminal Cases per 10,000 people, by Commune, for 2008.....	44
5.5	Number of registered Land Disputes, by Commune, in 2008	44
6	Gender	45
6.1	Registered Domestic Violence over 3 years.....	45
6.2	Percentage of registered cases of Families experiencing domestic Violence, by Commune, in 2008	45
6.3	Women's involvement over 3 years.....	45
6.4	Percentage of Female Participants in Civil Society and of 18-60 year women with uncertain Jobs, by Commune, in 2008	46
6.5	Female-headed Households over 3 years.....	46
6.6	Percentage female-headed Households and with Children of less than 5 years old, by Commune, in 2008	46
7	Indigenous People in the District	47
7.1	Ethnic Minorities in the District over 3 years.....	47
7.2	Other Minorities in the District over 3 years.....	47
	SECTION C: PLANS AND PROJECTS	49
8	Priorities and Plans	51
8.1	Priorities of Commune Councils for 2009 in the District by Sector	51
8.2	Temporary Agreements by Commune, for 2009	58
8.3	Outputs, estimated and actual costs of C/S Fund Projects between 2005 and 2008, by Commune	67
8.4	Total Expenditure on C/S Fund Projects by sector and commune between 2005 and 2008.....	69
8.5	Actual 2009 C/S Fund projects by Commune	69
9	District level Projects from 2006 to 2009	70
9.1	District Initiative Infrastructure Projects from 2006 to 2009	70
9.2	District Initiative Service Projects from 2006 to 2009	71
9.3	Inter Commune Council Projects in 2008 and 2009	72
9.4	Other Projects in 2008 and 2009	72
	SECTION D: SERVICES AND ORGANIZATIONS	73
10	Infrastructure.....	75
10.1	Length of and Expenditure on Roads in 2008, by District	75
10.2	Scale of and Expenditure on Irrigation in 2008, by District.....	75
10.3	Power Supply in 2008, by District	75
11	Health Facilities.....	76

11.1 Health Facilities in the Province, by Operational District.....	76
11.2 Health Facilities and Staff in the province, by Operational District.....	76
11.3 Deliveries in 2007 in the Province, by Operational District.....	77
12 Education	78
12.1 Schools, Classes, Students, Staff, for for all levels, for 2007/2008 by District.....	78
12.2 Characteristics of Schools and School Principals for 2007/2008 by Commune	78
12.3 Enrolment by Level of Education, 2006/2007 by Commune	79
12.4 Enrolment by Level of Education, 2007/2008 by Commune	79
12.5 Aspects of Enrolment for 2007/2008 by Commune.....	79
12.6 School Buildings for all schools in the District for 2007/2008, by Commune	80
12.7 Conditions of Classrooms and Existence of Separate School Office and Library, by Commune	80
12.8 Community Participation and Financing across all schools in the District for 2007/2008 by Commune	81
12.9 Percentage Student Flow Rates and Graduation by level 2006/2007, by Commune	81
13 Staff and Resources at the District	82
13.1 District Councilors elected in 2009	82
13.2 Committees of the Council.....	82
13.3 Board of Governors.....	83
13.4 Offices under Sala Krong, Sala Srok and Sala Khan	83
13.5 Municipality/District/Khan line offices.....	83
13.6 Properties and Equipment of District Administration	84
13.7 Registered Revenue of the District Administration in 2008	85
13.8 Services in the District	85
13.9 Civil Society Organizations active in the District.....	85
13.10 Private Sector Organizations.....	86
SECTION E: POVERTY DATA	87
14 Data on Poverty	89
14.1 Predicted Poverty Rates for 2009, by commune	89
14.2 Poverty data from survey.....	89

List of Abbreviations

#	Number
AGR	Agriculture
BR	Birth Registration
C. Pilot	Piloted Commune
C/S	Commune / Sangkat
CBO	Community-Based Organization
CDB	Commune Database
CDPD	Commune Development and Planning Database
CIP	Commune Investment plan
CLTS	Community Led-Total Sanitation
Comm.	Commune
Com Cov	Commune Covered
CPA	Complementary Package of Activities
CPS	Community Preschool
CCWC	Commune Committees for Women and Children
DANIDA	Danish International Development Agency
DDLG	Democratic Development and Local Governance Project (EC-UNDP)
DFID	Department For International Development (UK)
DIP	District Initiative Project
DIS	District Information System
District PDRD	District Office of Rural Development
District WP	District Work Plan
DIW	District Integration Workshop
DoLA	Department of Local Administration
Dr	Doctor
DWRM	District Office of Water Resource and Meterology
ECD	Early Childhood education (part of PE)
EMIS	Education Management Information System
Event IC	Celebration of International Days
FDH	Former District Hospital
GTZ	German Society for Technical Cooperation (Gesellschaft für Technische Zusammenarbeit GmbH)
Ha	Hectare
HC	Health Center
HC (NB)	Health Center (no building)
HH	Headed Household
HSI	Intervention for Health
HP	Health Post
HW	Hand Washing
ICC	Inter Commune Council
IFAD	International Fund for Agricultural Development
IND	Industry
Inter-commune	Inter-Commune Project Management Committee or Inter-commune project
IO	International Organization
LASED	Land Allocation for Socio-Economic Development
LGCR	Local Governance for Children's Rights
M&E	Monitoring and Evaluation
MA	Medical Assistant
MoEYS	Ministry of Education, Youth and Sports
MoH	Ministry of Health

MoP	Ministry of Planning
MPA	Minimum Package of Activities
MW1	Primary Midwives
MW2	Secondary Midwives
n/a	Not available
NCD	National Contracts Database
NCDD	National Committee for Sub-National Democratic Development
NGO	Non-Governmental Organization
NRML	Natural Resources Management and Livelihood
NU1	Primary Nurse
NU2	Secondary Nurse
OD	Operational District
ODF	Open Defecation Free
Ope. Costs	Operational Costs
Others	Other Staff
PBW	Public Works
PDoEYS	Provincial Department of Education, Youth and Sport
PDRD	Provincial Department of Rural Development
PDWRM	Provincial Department of Water Resource and Meteorology
PE	Parenting Education
PHAST	Participatory Hygiene and Sanitation Transformation
PHD	Provincial Health Department
PID	Project Information Database
PMC	Project Management Committee
Pop 04-05	Population Covered 2004 or 2005
PSDD	Project to Support Democratic Development through Decentralization and Deconcentration
RRD	Rural Road Development
RH	Referral Hospital
RILGP	Rural Investment and Local Governance Project
RPRP	Rural Poverty Reduction Program
RuLIP	Rural Livelihoods Improvement Program
SIDA	Swedish International Development Cooperation Agency
SPPA	Senior Provincial Program Advisor
TBA	Traditional Birth Attendant
UNDP	United Nations Development Project
UNICEF	United Nations Children's Fund
Vil	Village
Vil Cov	Village Covered
VIL-HC	Distance from Village to Health Center
WASH	Water, Sanitation and Hygiene
WRM	Water Resource and Meteorology

Glossary

C/S Fund: The Commune/Sangkat Fund is established and managed by the Government of Cambodia to provide financial support for development projects and administrative costs of Commune/Sangkat Councils. The amount is determined as a percentage of the National Budget (for 2009: 2.8% over the 2008 budget) and is expected to increase gradually over the years. The total 2009 budget under this fund is \$ 27,643,902 (of which \$ 19,272,170 is for Development Projects and \$ 8,371,731 for Administration). Under the Rural Investment and Local Governance Project the World Bank currently reimburses the costs of development projects if these meet the Bank's criteria.

CDB: the Commune Data Base is a national database, compiled by the Ministry of Planning, on the basis of detailed questionnaires, completed at village and commune level, which are then sent to the Departments of Planning for data entry. The most recent round of data collection took place at the end of 2008 (and is reflected in the District Data Books). Commune, District and Provincial Profiles can be generated from this database and should be available from provincial Departments of Planning.

CDPD: the Commune Development and Planning Database is a database maintained by Departments of Planning and Ministry of Planning, recording proposed activities as determined and prioritized by Commune and Sangkat Councils; the Temporary Agreements between these councils and supporting agencies, as decided at District Integration Workshops and details on projects that actually take place at commune, district and provincial levels.

CIP: The Commune Investment Plan is a rolling three-year plan, developed and decided by the Commune or Sangkat Council. It sets priorities and identifies the projects proposed for the years to come.

Commune and Sangkat (C/S): the Communes (in rural areas) and Sangkats (in urban areas) are the lowest and smallest units of local government. Councils are elected directly, once in five years, for the 1417 Communes and 204 Sangkats. In the C/S there are 14,119 villages, which have Village Chiefs, but don't constitute a formal level of local government.

DIP: the District Initiative Project is jointly supported by the MDLF (Multi-Donor Livelihood Facility (supporting the NRM&L Program)) and PSDD. In 2009 it covers 106 districts, 60% of the total in the country, with a budget of \$ 3.2 million. It is focused on capacity development in planning, democratic development, public competitive procurement, financial management and service delivery.

DIS: The District Information System is a national database maintained by NCDD, recording resources, staff, revenue, infrastructure and equipment available in the 193 Districts and Khans throughout the country. The last update took place in July 2009.

District, Municipality and Khan constitutes the third level of Government in Cambodia. There are 159 rural Districts, 26 Municipalities and 8 Khans of Phnom Penh Capital. They all have Councils which were, for the first time, elected in May 2009, by the Commune/Sangkat Councilors. These councils have a mandate for 5 years.

DIW: District Integration Workshops are held between July and October, to bring Commune/Sangkat Councils, looking for support for their projects, together with the governmental and non-governmental agencies that may provide support.

ICC: Inter Communes Council projects are executed in 10 provinces under the Democratic and Decentralized Local Governance Project (DDLG). This five year project (2006-2010) is executed by Ministry of Interior and funded by the European Commission and UNDP. The project focuses on improving dialogue partnership and accountability; create a network of Commune Councils at the provincial and national level and support and contribute to local area development for poverty reduction. The work under the ICC component supports investments and services formulated through inter-commune dialogue and planning.

MEDiCAM: A non-profit and non-partisan membership organization for NGOs active in Cambodia's health sector. It is the primary networking agency for health-related NGOs.

NCDD: the National Committee for sub-National Democratic Development is the inter-ministerial body charged with the implementation of the Organic Law (a key legislative document, adopted in 2008, outlining the envisaged decentralization). NCDD also channels substantial financial assistance by a number of Development Partners, to projects and programs at various levels. This amounted to over \$ 91 million in 2008. More information at: www.ncdd.gov.kh. This website also provides access to reports, manuals, legal documents, details on projects and more.

OD: the Operational Districts are the districts as defined and used by the Ministry of Health. These do not coincide with the 193 (Administrative) Districts and Khans, as used by all other RGC agencies. The Operational Districts are usually larger, and so there are 77 Operational Districts against 193 administrative Districts and Khans. However they do fit within the boundaries of administrative provinces.

PID: The Project Information Database is the database maintained by NCDD at national and sub national level, to follow all aspects of projects by Commune and Sangkat Councils, including the C/S Fund projects

Provincial Investment Fund (PIF)

The Provincial Investment Fund is allocated to all Provinces and Municipalities according to a population based formula. Part of the fund is earmarked for support to planning activities of the Provincial / Municipal Department of Planning; and to gender mainstreaming activities of the Provincial Department of Women's Affairs. The remaining "un-earmarked PIF" is allocated by PRDC to sectoral technical departments against established criteria and in response to proposals with prioritisation taking into account: priorities formulated by the CS Councils and aggregated by District into District Priority Activities Matrices (DPAM); alignment with national planning and poverty alleviation criteria, complementarity with other planned activities; and performance of the Department concerned in implementation of activities in previous years. With this provisional allocation, the Department then programs activities through the District Integration Process. Finally, the agreed activities, plus support costs amounting to no more than 25% of the total, are included in a sub-contract signed between PRDC and the Department, pursuant to the overall PSDD contract signed between NCDD and PRDC. Total budget has been around \$ 2 million per year.

Province: the 23 Provinces and Phnom Penh Capital City represent the 2nd layer of government. They vary in size, from very small, like Kep (approx. 36,000 people) and Pailin (approx. 70,000 people), or large but with small populations, like Mondulkiri (over 60,000 people), and Ratanakiri (over 153,000) to densely populated and large, like Kampong Cham (over 1.7 million people) and Kandal (approx. 1.4 Million people).

PSDD: the Project to Support Democratic Development through Decentralization and Deconcentration is funded by DFID (UK), SIDA (Sweden) and UNDP and runs from 2006 till the end of 2010 (including a one year extension). Annual budgets range from \$ 11 million to over \$ 18 million. The project provides core technical support to NCDD and to the provinces, financial support to the C/S Fund, District Initiative, Provincial Investment Fund and capacity building support through training, studies and advisory services.

RILGP: The Rural Investment and Local Governance Project is a World Bank funded project that provides substantial support to C/S Fund projects and to developing the required infrastructure, policies, systems and skills. It started in 2003 with a Loan for \$ 22 million for 2003-2007 and was then extended with a Grant of \$ 36 million for the period of 2007-2010. Discussions about a possible RILGP 2 are taking place between RGC and the World Bank.

RPRP: the Rural Poverty Reduction Project is a seven year project from 2004 till 2010, funded by IFAD and UNDP and implemented through the Ministry of Agriculture, Forestry and Fishery, supported by the Ministry of Interior and facilitated by NCDD. The project is active in the provinces Prey Veng and Svay Rieng and focuses on 120,600 households below poverty line. The objective is poverty reduction with the active participation of the poor through improved livelihoods, Strengthened capacity, Sustainable farming systems and natural resource management, new and/or rehabilitated infrastructure development, increase accessibly to technology, services and markets for their economic and social development.

RULIP: the Rural Livelihoods Improvement Project is implemented by the Ministry of Agriculture Forestry and Fisheries (MAFF)' Project Support Unit- PSU, with the NCDD playing the role of cooperating agency. Funded by IFAD and UNDP, the project will run till 2014. The target group consists of poor households who have little or even no land, few livestock or other assets and often many dependents. The main goal of the project is to directly or indirectly improve the livelihood systems, food security and incomes of a total of 33,900 rural poor, ethnic minority and female headed households in targeted village of Kratie, Preah Vihear and Ratanakiri provinces in a sustainable manner.

Seth Koma: The UNICEF funded Seth Koma program focuses on measurable action for children and women. During 2006 -2010 it is implemented in six provinces. Government and UNICEF pursue a set of inter-related goals, addressing critical stages of the life cycle of the child: a) Mothers have safe pregnancies and deliveries and healthy newborns; b) best possible start in life of infant; c) Children enter schools at the right age of six years; d) Children are protected from exploitation, abuse, violence, discrimination and other risks; and e) Youth and adolescents acquire life skills, express their views, participate in the decisions.

Preface

The Government of Cambodia attaches great importance to optimal use of scarce resources and to participatory planning and management at all levels. The Organic Law which was adopted in 2008 provides the legal context for further steps towards improving and decentralizing planning, management and monitoring, and towards greater accountability and transparency of institutions at sub-national levels.

The Government has established elected Councils at the sub-national levels, and we will progressively give them the responsibilities, together with the human and financial resources, to deliver a wide range of public services. They will be more democratic, more efficient, more transparent and accountable, better at addressing gender and other inequalities, and at fighting corruption. We recognize that development does not come from government alone; it needs the involvement of citizens, civil society and the private sector, and the new system will facilitate this.

A central element in this process is the availability of information on any aspect of development to all concerned parties. The newly elected Councillors at District and Khan level, line departments operating at these levels, but also NGOs, Development Partners, Commune Councillors and citizens throughout Cambodia need information on problems and requirements, resources and opportunities, services and agencies, plans and projects. They will need such information to better understand the present situation, set targets for the future, monitor progress, know what others are doing and to apply resources wisely and this is the reason the District Data books will be so valuable.

The District Data Books are a major step towards full transparency and towards informed planning and decision-making. They provide all available data at District, Khan, Commune and Sangkat level in easily accessible formats, in Khmer and English, through over 16,000 printed copies, CD-ROMs and the NCDD website.

This is the first time in Cambodia (and possibly in South East Asia) that such detailed information is made so widely available and NCDD should be commended for the hard work that has gone into this. We also thank the Ministry of Planning, which provided the detailed data of the Commune Data Base, the sectoral ministries and provincial authorities who contributed data and the Development Partners who provided financial support.

It is our sincere hope that the publication of the District Data Books will strengthen capacities, especially at district levels, for evidence-based development planning. We also hope that this information will deepen the understanding among Ministries, Provincial Authorities, Development Partners, NGOs and research agencies of the realities at commune and district levels.

We call upon all to use and distribute this information, complement or correct where appropriate and to contribute new data in the years to come.

Sar KHENG

Deputy Prime Minister, Minister of Interior and Chairman of NCDD

Introduction

Purpose

The purpose of the District Data Books is to bring together information on any aspect of life and development of Districts, Khans, Communes and Sangkat, together and make this widely available. The primary targets are the newly elected District Councilors, district level line departments, provincial agencies, Development Partners and NGOs operating at this level. They need detailed knowledge on current living conditions, natural resources, infrastructure, agriculture and other economic activities, current service levels, past and planned projects and available resources.

While much information exists on many of the above aspects, it is often hard to access that information and much is lost to reports, databases and statistics that are not widely shared. Data are often only available in one language and often out-of-date, and many reports cover only one sector or region.

We found that these problems are especially acute at the district level. Now that Districts are becoming a much more significant level of local government and development planning, there is an urgent need for wide-ranging data to be used for setting base-lines, planning and prioritizing, monitoring and learning.

Approach

We have attempted to identify and compile all available statistics, reports, maps and other data at district and/or commune level. From this we have selected information that is available for all or most districts, reasonably reliable and up-to-date, sufficiently detailed and of possible interest to development planners, decision makers, agencies and citizens.

The major sources of the information in these District Data Books are:

- a) The Commune Data Base information over the years 2006 to 2009 (the most recent data were collected late last 2008), as compiled by the Ministry of Planning
- b) Detailed information directly collected from the Ministry of Health, the Ministry of Education, Youth and Sports and (for maps) the Ministry of Land Management, Urban Planning and Construction
- c) The Project Information Database (PID) at NCDD (up-to-date)
- d) The Commune Development and Planning Database (CDPD) (up to date)
- e) The District Information System (DIS) (updated per Mid 2009)
- f) Direct data collection at provincial and district level on private sector, irrigation, roads, and electricity, through provincial agencies
- g) Medical data collected from MEDiCAM
- h) The ID Poor Project – for poverty data on a number of provinces and districts
- i) NCDD's work on predictive poverty rates
- j) Specific projects for outputs, plans and budgets (Seth Koma, RILGP, RPRP and ICC)

Limitations of the data

We are fully aware that the data we collected are not always complete, consistent or correct. While we have rejected information that was wrong or very incomplete, we decided not to aim for statistical and scientific perfection, but to include information that is useful, relevant

and comprehensive. We also accepted different sources for the same data as this may encourage discussion on the quality of the respective data.

We strongly encourage anyone who notes errors or incompleteness in these data to contact us and to share their data. We hope that the next round of producing such District Data Books can draw on wider sources and more complete data.

We encourage the District Administrations, who receive these data also in digital format, not only to use these for their planning and monitoring, but also to start correcting and updating these data and to share new data with NCDD for future use.

Contents

The information in the following pages is organized in five sections:

- a) **Geographical data:** this section provides maps on infrastructure and administration and on land use and natural resources management. These maps are also provided in large format to all Districts and Khans.
- b) **District Profile:** this presents wide ranging data, covering 2006 – 2009, at district and commune level, extracted from the Commune Data Base, but edited for better understanding.
- c) **Plans and Projects:** this section presents development priorities determined by Commune and Sangkat Councils, Temporary Agreements, outputs and expenditure of major projects at Commune and District level over 2006 – 2008 and plans and budgets for 2009.
- d) **Services and Organizations:** this section provides details on key infrastructure (roads, electricity, irrigation systems) and services in health and education at district and commune level. It also provides an inventory of resources at the District Administration, NGOs operating in the district and private sector agencies active in the district.
- e) **Poverty Data:** this section provides predicted poverty rates for 2009 for all districts and communes and detailed poverty data compiled and processed by the ID Poor project for those that have been covered by this project.

The future

It is our hope that this is the start of a longer-term process. We hope that a next edition of these District Data Books will offer more comprehensive, correct and up-to-date information. We hope that the District Administrations will not only start using this information, but also improve and update it. For this they are all provided with the full data set in digital format.

We invite agencies, projects and experts to send reports, statistics and maps that could be used for a next version to us and we invite all users of the District Data Books to inform us about errors, updates and inconsistencies. Please contact us through info@ncdd.gov.kh

We now invite you to browse through this data book. You may open this randomly or use the table of contents and go to the aspects that have your special interest.

We hope that you will be informed, surprised and assisted. We hope, above all, that this information will lead to a deeper understanding of causes and effects of poverty, to purposeful decisions on how to tackle those causes and to greater transparency in using scarce resources for the benefit of all.

Martin de Graaf
Program Advisor, PSDD/NCD

SECTION A: GEOGRAPHY

1 Administration and Infrastructure

Please see separate folder containing A3 maps.

2 Land Use and Natural Resources

Please see separate folder containing A3 maps

3 Geography

3.1 Land Area

Total Land Area (ha)	Forest Land Area (ha)		Cultivation Land Area (ha)	Construction Land Area (ha)	Other Land Area (ha)
	Total	Flooded Forest Area			
150000	87062.84	0	10782.38	0	0

3.2 Distances between Offices

Location	Distance (Km)
From District Office to C/S Office of Chambak	28
From District Office to C/S Office of Chrouy Banteay	28
From District Office to C/S Office of Kampong Kor	16
From District Office to C/S Office of Kaoh Ta Suy	19
From District Office to C/S Office of Preaek Prasab	3
From District Office to C/S Office of Ruessei Kaev	33
From District Office to C/S Office of Saob	18
From District Office to C/S Office of Ta Mau	18

SECTION B: DISTRICT PROFILE¹

¹ All data in this section come from the Commune Database (CDB) unless otherwise specified. These include primarily new CDB data, collected late 2008, and some data from earlier years. Please note that percentages are rounded to the nearest whole number.

1 General Information

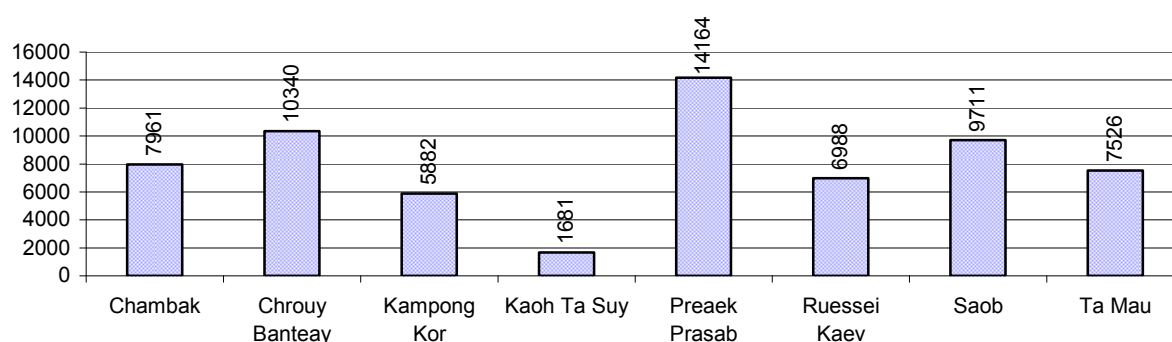
1.1 Population of the District

1.1.1 Total Population

Number of families	2005	2006	2007	2008
Total number of families	12,477 families	12,669 families	12,995 families	13,457 families
Increase (+)/Decrease (-) in nr of families		2%	3%	4%
Total population	61,185 pers	62,485 pers	62,085 pers	64,253 pers
Increase (+)/Decrease (-) in nr of people		2%	-1%	3%
Number of female Headed Households (HH)	1,605 families	1,463 families	1,434 families	1,496 families

Note: Percentages of population and increase/decrease are calculated on basis of the previous year. A negative sign in front of the percentage indicates a decrease in population.

1.1.2 Population, by Commune, in 2008



1.1.3 Population, by Age Group, over 3 years

Population by age group	2006	2007	2008	
	%	%	%	Number
Age 0-5 years (as percentage of the population)	12%	12%	12%	7,999 persons
Male 0-5 yrs	48%	49%	48%	3,805 persons
Female 0-5 yrs	52%	51%	52%	4,194 persons
Age 6-17 (as percentage of the population)	30%	28%	28%	17,869 persons
Male 6-17 yrs	50%	51%	49%	8,733 persons
Female 6-17 yrs	50%	49%	51%	9,136 persons
Age 18-60 (as percentage of the population)	50%	52%	52%	33,185 persons
Male 18-60 yrs	49%	49%	49%	16,324 persons
Female 18-60 yrs	51%	51%	51%	16,861 persons
Age 61 above (as percentage of the population)	8%	8%	8%	5,200 persons
Male 61	46%	45%	46%	2,380 persons
Female 61	54%	55%	54%	2,820 persons

Note: The overall percentage for each age group is calculated on the basis of the total population. The gender distribution of each group is calculated on the basis of the population within that particular age group.

1.2 Occupations

1.2.1 Percentage of families with a particular Occupation over 3 years

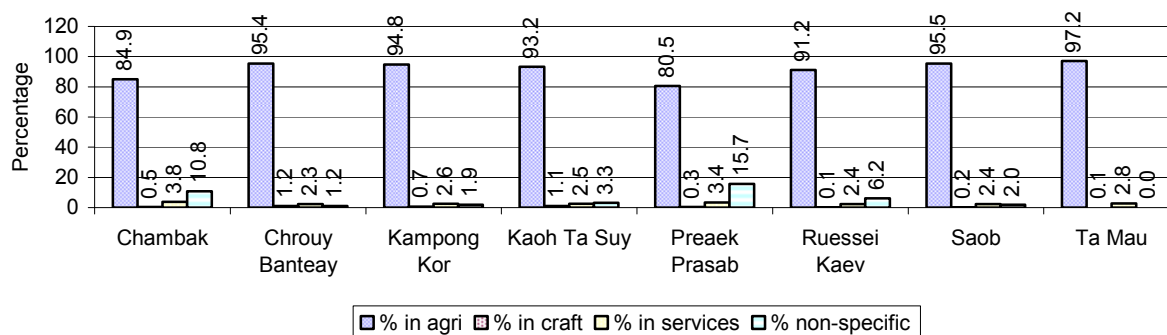
This table shows the percentage of the population who have a particular occupation (job), for example the percentage of the population in the district who are rice farmers, furniture crafter, trader, etc.

Description	2006	2007	2008	
	%	%	%	Number
Families whose main occupation is agriculture	88%	87%	90%	12,168 Families
Families whose primary occupation is rice farming	62%	66%	61%	8,249 Families
Families whose primary occupation is cultivating long-term crops	2%	2%	5%	719 Families
Families whose primary occupation is cultivating short-term crops	17%	13%	18%	2,457 Families
Families whose primary occupation is cultivating vegetable	1%	1%	1%	191 Families
Families whose primary occupation is fisherman	4%	4%	3%	422 Families
Families whose primary occupation is livestock farmer	1%	1%	1%	71 Families
Families whose primary occupation is NTFP collection	0%	0%	0%	59 Families
Families whose main occupation is craft work	0%	0%	0%	62 Families
Families, whose main occupation is in furniture craft, wooden, rattan, vine, bamboo	0%	0%	0%	18 Families
Families whose main occupation is in metal, aluminum, glass goods production	0%	0%	0%	3 Families
Families whose main occupation is food production	0%	0%	0%	10 Families
Families whose main occupation is tire, plastics and rubber goods production	0%	0%	0%	0 Families
Families whose main occupation is textile, clothing goods production	0%	0%	0%	1 Families
Families whose main occupation is in other production, not listed above	0%	0%	0%	30 Families
Families whose main occupation is services	3%	3%	3%	383 Families
Families whose main occupation is trade	2%	2%	2%	239 Families
Families whose main occupation is repair	1%	1%	1%	89 Families
Families whose main occupation is providing transport services	0%	0%	0%	46 Families
Families whose main occupation is providing other services	0%	0%	0%	9 Families
Families whose main occupation is not clear (or multi)	9%	10%	6%	844 Families

Note: The occupation percentages are calculated on the basis of the total number of families.

1.2.2 Percentage Families that work in one of four occupational sectors, by Commune in 2008

This table indicates the percentage of families involved in one of four occupation types: agriculture, craft, services or non-specific (other). Please note agriculture includes forestry activities such as cutting down trees and gathering gum from the trees.



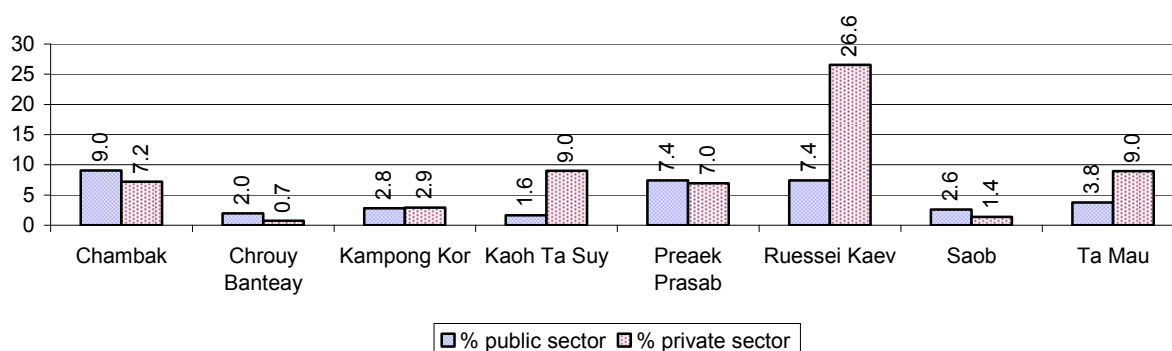
Note: Calculated on the basis of the total number of families within a commune.

1.2.3 Percentage of Families with public Sector, private Sector or uncertain Jobs, over 3 years

Description	2006	2007	2008	
	%	%	%	Number
Families that have a family member who is a government official, staff or worker	5%	5%	5%	680 families
Families that have a family member who is a private sector staff or worker	9%	7%	7%	963 families
Number of people aged 18-60 with uncertain/irregular jobs	3%	6%	3%	1,053 persons

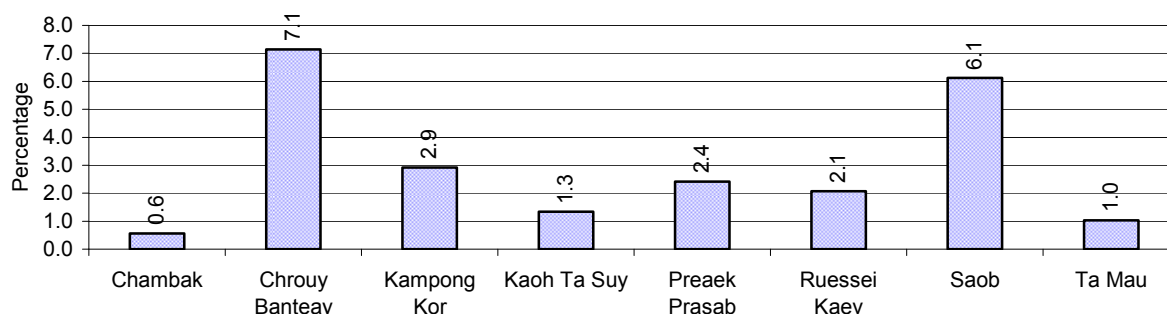
Note: In the first two rows percentages are calculated on the basis of the total number of families. In the third row the percentage is calculated on the basis of the total number of people aged 18-60 years.

1.2.4 Percentage of Families with public or private Sector Jobs, by Commune in 2008



Note: Calculated on the basis of the total number of families in the commune

1.2.5 Percentage of People aged 18-60 years with uncertain/irregular Jobs, by Commune, in 2008.



1.3 Property

1.3.1 Housing types and facilities over 3 years

This table shows the percentage of people living in a certain type of house. It also indicates how many houses have electricity or battery powered lights and how many have TV.

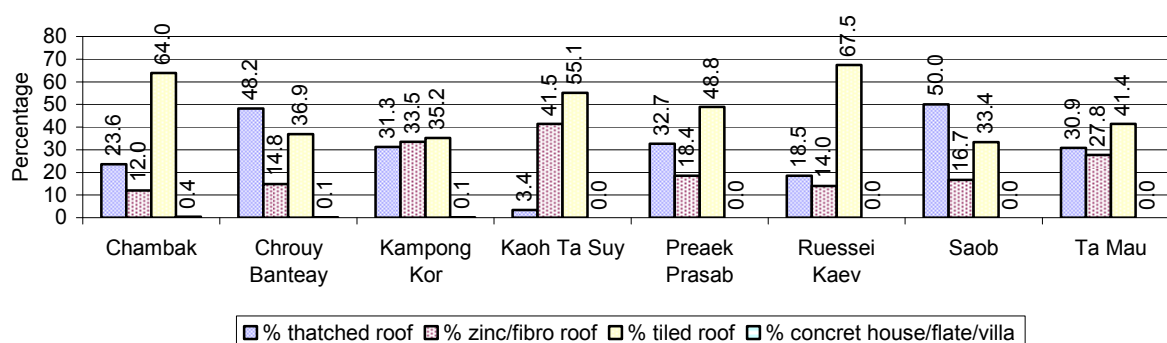
House Type	2006	2007	2008	
	%	%	%	Number
House with thatched roof	37 %	35 %	34 %	3,947 houses
House with zinc/fibro roof	17 %	18 %	20 %	2,314 houses
House with tiled roof	46 %	47 %	47 %	5,454 houses
Flats/apartments (with many families living)	0 %	0 %	0 %	2 houses
Concrete house or flat (with one family living)	0 %	0 %	0 %	7 houses
Villa house	0 %	0 %	0 %	0 houses
Houses with electricity	0 %	0 %	7 %	861 houses
Houses with battery light	75 %	77 %	77 %	8,969 houses
Houses with TV	51 %	64 %	65 %	7,592 houses

Note: Calculated against the total number of houses

1.3.2 Families living on public Land or without a permanent House

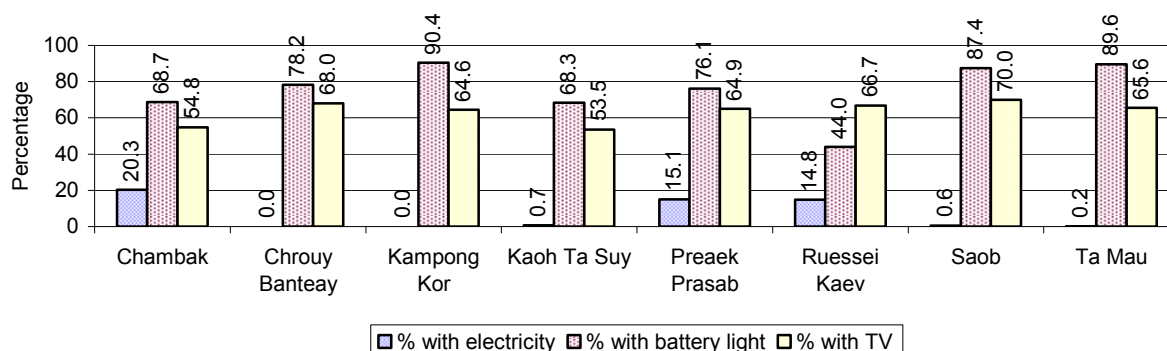
Living situation	2006	2007	2008
Families living in a house on public land	27 families	18 families	31 families
People, without permanent housing	4 person(s)	25 person(s)	6 person(s)

1.3.3 Percentage of Population living in a particular type of House, by Commune, in 2008



Note: Calculated against the total number of houses in each commune

1.3.4 Percentage of Houses with Electricity, Battery Lights and/or TVs, by Commune, in 2008



Note: Calculated against the total number of houses in each commune

1.3.5 Types of Vehicles and their ratio to Families across 3 years

This table shows the number of families per vehicle in the district. The last column shows the total number of each type of vehicle in the district for 2008.

Description	2006 ratio	2007 ratio	2008	
			Ratio	Number
Bicycle and bicycle with trailer	1	1	1	9,828
Ox-carts and horse-carts	2	2	2	6,099
Motorbike/with trailer	6	5	4	3,384
Motor tri-cycle	N/A	N/A	207	65
Large Transportation				
Total number of cars/trucks	91	77	68	198
Locally made vehicles	239	224	160	84
Trucks for goods transport	325	236	286	47
Buses/mini buses for passengers	507	448	396	34
Family cars	576	500	408	33
Agriculture machinery				
Tractors used for plowing	576	684	449	30
Power-tillage used for plowing	195	194	151	89
Other type of machinery				
Other type of machinery	288	129	1,121	12
Water transportation				
Row boats	4	4	4	3,238
Total number of motor boats	23	26	28	487
Motor boats used for fishing	30	35	37	365
Motor boats used for passengers	1,810	722	673	20
Motor boats used for goods transporting	103	116	132	102

Note: Ratio of families to a particular type of vehicle is the result of the total number of families divided by total number of that type of vehicle. Other types of vehicles, such as bulldozer, excavator, rollers etc. are not listed.

2 Infrastructure and Economy

2.1 Roads in meters over 3 years

Description	2006	2007	2008
Bituminous road	0 m	0 m	0 m
DBST, Macadam road	0 m	0 m	0 m
Concrete road	0 m	0 m	0 m
Laterite road	81,289 m	99,069 m	101,601 m
Constructed earth road	10,130 m	11,480 m	4,872 m
Un-constructed earth road	61,375 m	24,000 m	45,350 m

2.2 Sewerage Pipes in meters over 3 years

Description	Sewage pipe length		
	2006	2007	2008
Total length of sewage pipe, diameter 30-50 cm	0 m	16 m	16 m
Length of newly constructed sewage pipe, diameter 30-50 cm	0 m	0 m	0 m
Length of sewage pipe, diameter 30-50 cm needs repair/rehabilitation	0 m	2 m	1 m
Total length of sewage pipe, diameter of pipe 60-100 cm	41 m	32 m	32 m
Length of newly constructed sewage pipe, diameter 60-100 cm	0 m	0 m	0 m
Length of sewage pipe, diameter 60-100 cm needs repair/rehabilitation	9 m	16 m	8 m
Sewage pipe, diameter of pipe over 100 cm	0 m	0 m	0 m
Length of newly constructed sewage pipe, diameter over 100 cm	0 m	0 m	0 m
Length of sewage pipe, diameter over 100 cm needs repair/rehabilitation	0 m	0 m	0 m

2.3 Drainage and Bridges

Construction Type	2006		2007		2008	
	place(s)	Length	place(s)	Length	place(s)	Length
Single pipe culvert	22	503m	36	498 m	24	507 m
Double-pipe culvert	4	27m	5	43 m	5	50 m
Box pipe culvert	4	32m	6	58m	3	16 m
Wooden bridge	10	443m	8	750m	4	195 m
Concrete bridge	6	122m	3	81m	6	139 m
Bale bridge	3	240m	4	241m	3	166 m
Spillway construction	2	115m	2	115m	3	145 m

2.4 Services in the District

Descriptions	Number of places by year		
	2006	2007	2008
Public			
Electricity generating stations	0	0	2
Health clinics	0	0	0
Private			
Bicycle and motorcycle repair places	34	37	48
Agricultural machinery, tools and equipment repair places	1	2	4
Electronic tool repair places	4	3	3
Battery-charging services	69	62	61
Handicraft places, wooden furniture and forest by-products	4	4	1
Other handicraft places (excluding furniture)	2	2	5
Small-scale services (hairstylist, phone service, massage,	17	58	46

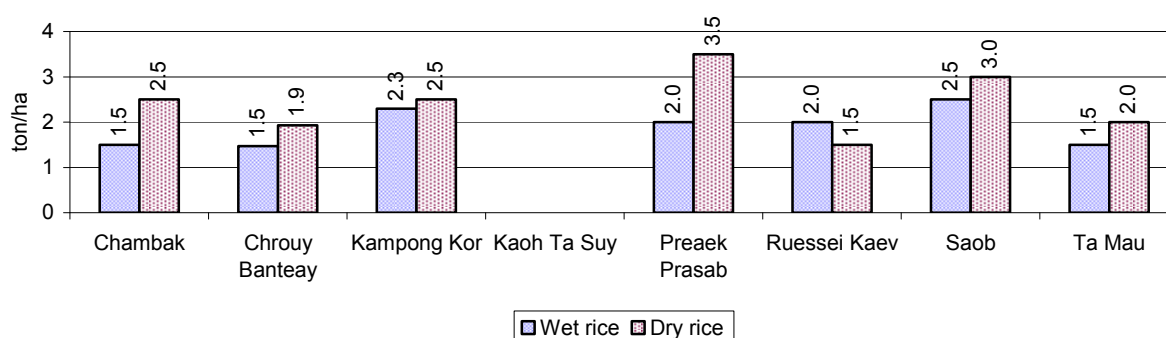
Descriptions	Number of places by year		
	2006	2007	2008
Karaoke, etc)			
Small-scale food shop businesses (Food, groceries, drink shop, etc)	45	43	45
Small-scale rice mills	291	196	158
Medium or large-scale rice mills	0	0	0
Small-scale markets	2	3	3
Large-scale market	0	0	0
Alcohol refinery places	82	63	49
Pharmacies and small drug stores	4	1	0
Hotels	0	0	0
Guest houses	0	0	0
Restaurants	0	0	0
Gasoline stations	0	1	0

2.5 Agriculture

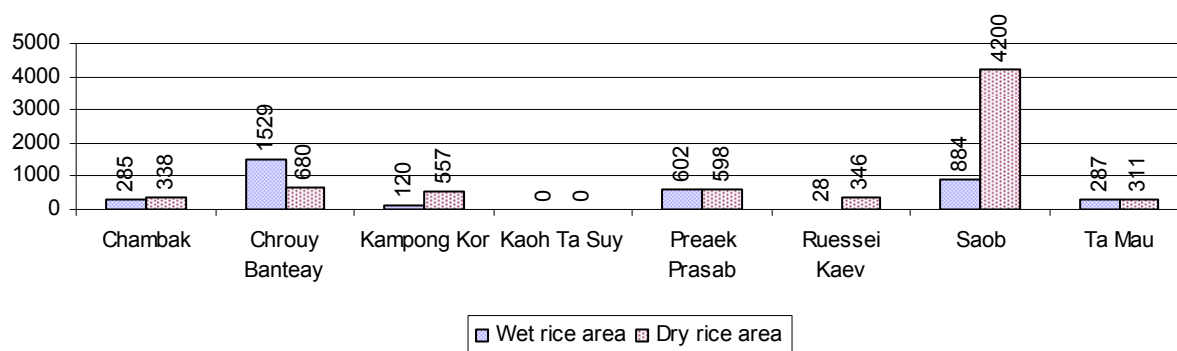
2.5.1 Rice cultivation in the District over 3 years

Description	2006	2007	2008
Total dry rice land area	6,067 ha	6,029 ha	7,030 ha
Actual dry rice cultivation area	6,046 ha	6,025 ha	7,030 ha
% actual cultivation to total land	100%	100%	100%
Total dry rice production	14,217 tonne(s)	14,925 tonne(s)	17,003 tonne(s)
Average dry rice yield	2.4 tonne(s)/ha	2.5 tonne(s)/ha	2.4 tonne(s)/ha
Total wet rice land area	3,777 ha	3,796 ha	3,780 ha
Actual wet rice cultivation area	2,324 ha	3,752 ha	3,735 ha
% actual cultivation to total land	62 %	99%	99%
Total wet rice production	4,946.80 tonne(s)	7,809.52 tonne(s)	7,080.49 tonne(s)
Average wet rice yield	2.1 tonne(s)/ha	2.1 tonne(s)/ha	1.9 tonne(s)/ha
Total intensive rice land area	0 ha	0 ha	0 ha
Actual intensive rice cultivation area	- ha	- ha	- ha
Average intensive rice yield	- tonne(s)/ha	- tonne(s)/ha	- tonne(s)/ha
Actual upland rice cultivation area	263 ha	252 ha	303 ha
Total upland rice production	447 tonne(s)	462 tonne(s)	505 tonne(s)
Average upland rice yield	1.7 tonne(s)/ha	1.8 tonne(s)/ha	1.7 tonne(s)/ha

2.5.2 Estimated wet and dry Season Rice Yield in tonne(s)/Ha, by Commune, in 2008



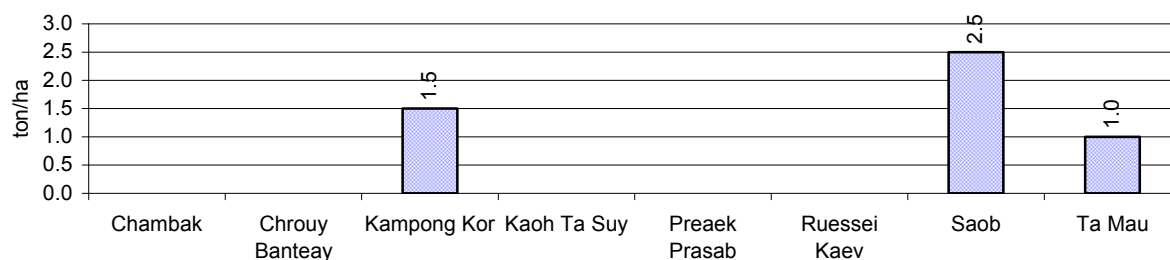
2.5.3 Cultivated wet and dry Season Rice areas in Ha, by Commune, in 2008



2.5.4 Estimated intensive Rice Yields in tonnes/Ha, by Commune, for 2008

There were no estimated intensive rice yields in this District in 2008

2.5.5 Estimated upland Rice Yield in tonnes/Ha, by Commune, for 2008

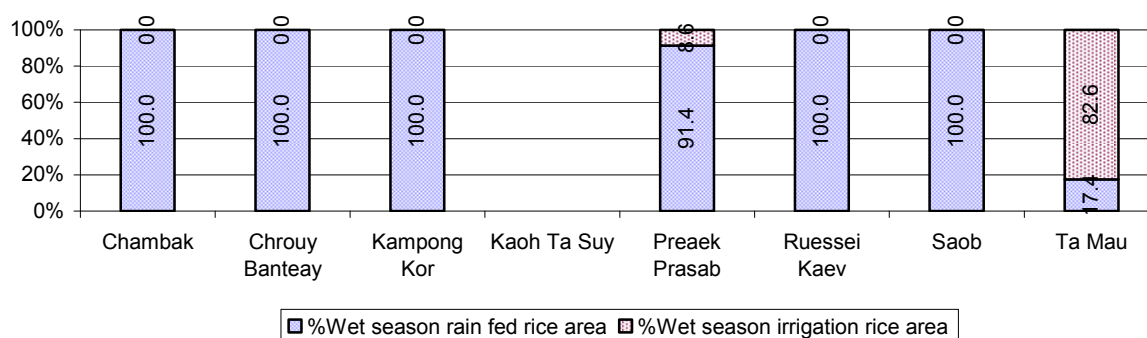


2.5.6 Wet season Rice irrigation across 3 years

Description		2006 %	2007 %	2008	
				%	Number
Total area of wet season rain fed rice land		69%	92%	92 %	3,446 ha
Percentage of wet season rice land that is irrigated; and for 2008 area in Ha		31 %	8 %	8 %	289 ha
Where	Area irrigated from canal/dam	60 %	100 %	93 %	269 ha
	Area irrigated from river, stream, lake, natural pond	26 %	0 %	7 %	20 ha
	Area irrigated from drilled well	7 %	0 %	0 %	0 ha
	Area irrigated from dug pond	7 %	0 %	0 %	0 ha

2.5.7 Water sources for wet Season Rice Cultivation, by Commune, in 2008

This chart shows the percentage of wet season rice cultivation receiving water from rain (natural) and from irrigation.



2.5.8 Access to Irrigation

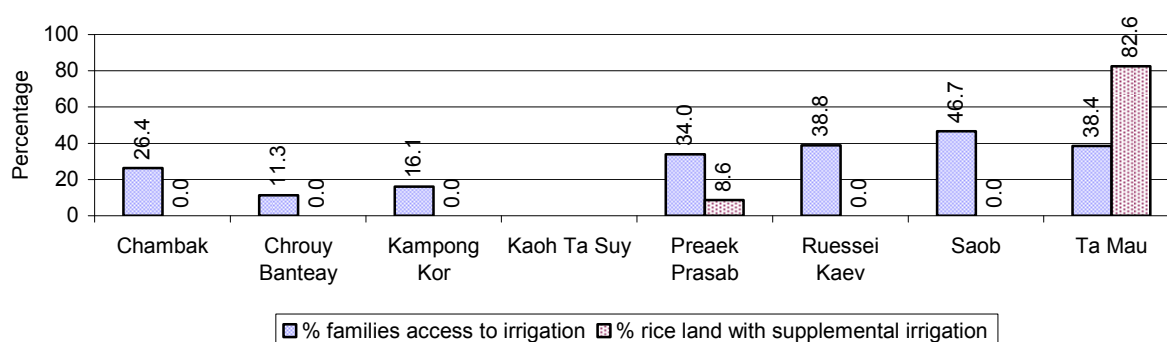
Description	2006 %	2007 %	2008	
			%	Number
Families who have access to irrigation water	35%	31%	30%	2,494 families
Families who have irrigation wells	0%	0%	0%	5 families

Note: Calculated against the total number of families are rice farmers

2.5.9 Number of Irrigation Wells over 3 years

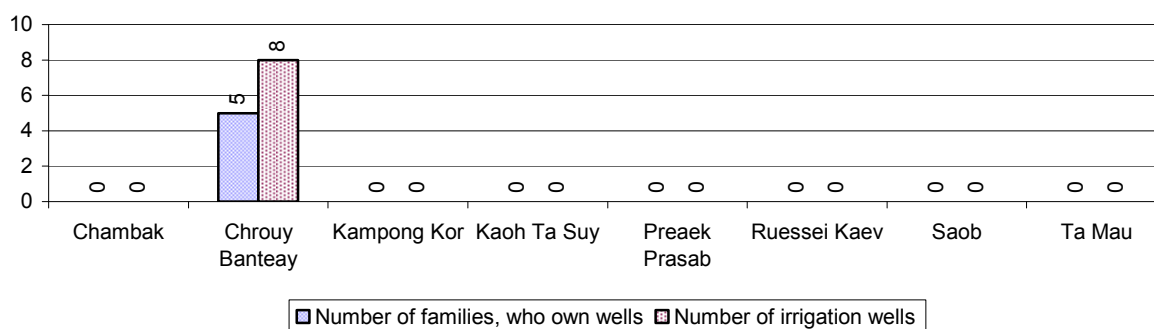
Description	2006	2007	2008
Number of irrigation wells	10 wells	8 wells	8 wells

2.5.10 Percentage of Families with access to (supplemental) Irrigation for wet Season Rice cultivation, by Commune, in 2008



Note: % of families, with access to irrigation is calculated against the total number of families, whose main occupation is rice farming. Irrigated wet rice land area is calculated against the total actual wet rice land cultivated areas

2.5.11 Irrigation Wells, by Commune, in 2008

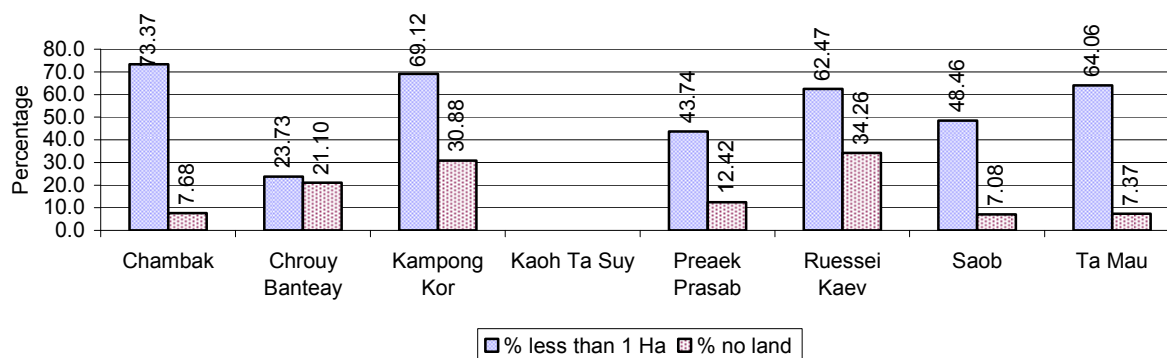


2.5.12 Farmers owning less than one hectare of Rice Land

Description	2006	2007	2008	
	%	%	%	Number
Families who have less than one hectare of rice land	56%	52%	51%	4,171 families
Families who do not own any rice land	17%	12%	14%	1,176 families

Note: Calculated on basis of total number of families who are rice farming

2.5.13 Percentage of Farmers with less than one Hectare or no Rice Land, by Commune, in 2008

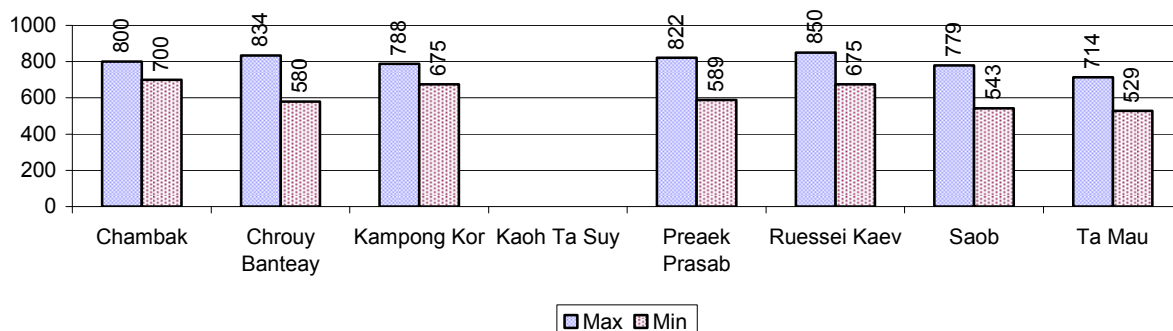


Note: Calculated on basis of total number of families who are rice farming

2.5.14 Average farm-gate Prices of Rice, over 3 years

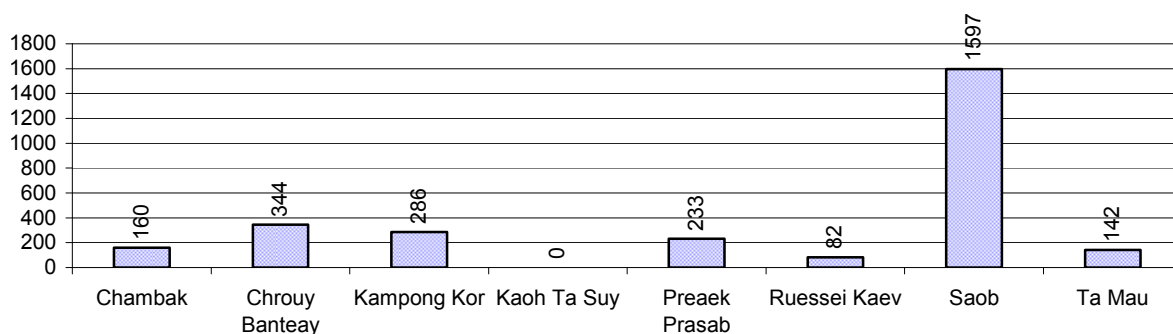
Description	2006	2007	2008
Maximum average farm gate price	618 Riels/Kg	890 Riels/Kg	798 Riels/Kg
Minimum average farm gate price	466 Riels/Kg	727 Riels/Kg	613 Riels/Kg
Average farm gate price	542 Riels/Kg	809 Riels/Kg	705 Riels/Kg
Average rice production per person	314 Kg/person	374 Kg/person	383 Kg/person

2.5.15 Minimum and maximum farm-gate Prices of Rice in Riel/kg, by Commune, in 2008



2.5.16 Production of Paddy in Kgs/Person, by Commune, in 2008

This table shows how much paddy (harvested rice) is produced in a year in a commune, in kgs per person.

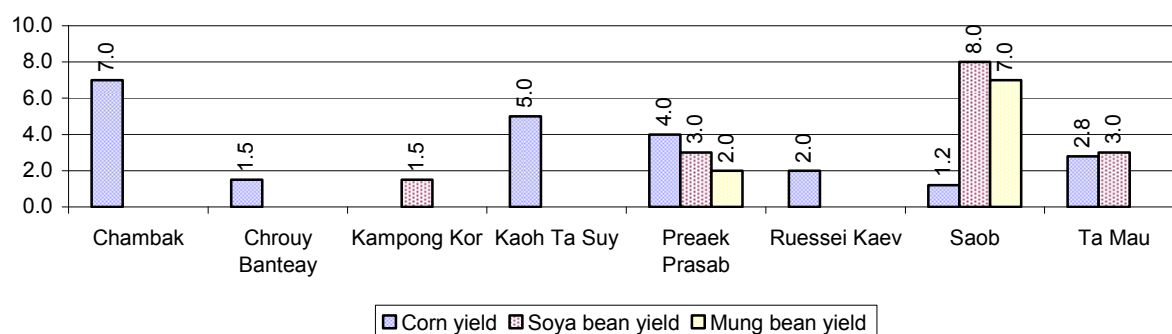


2.5.17 Production of other Crops, over 3 years

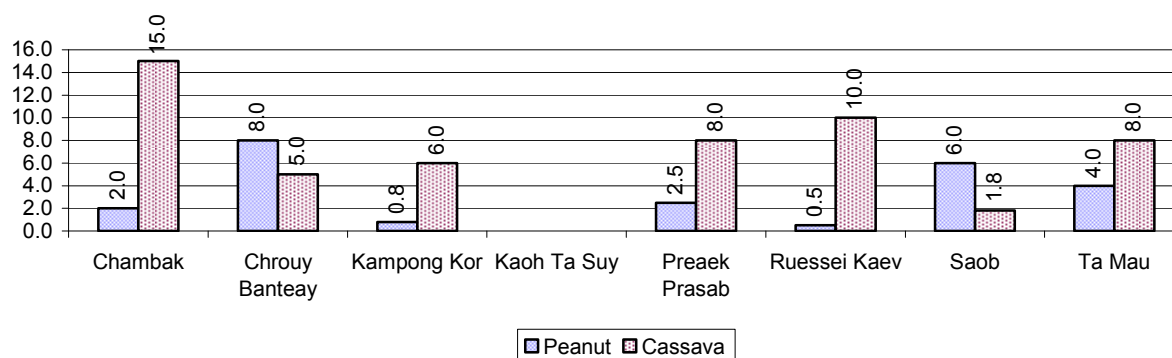
Crops	2006	2007	2008
Corn cultivation area	569 ha	577 ha	639 ha
Estimated corn yield	2.2 tonne(s)/ha	2.8 tonne(s)/ha	3.4 tonne(s)/ha
Estimated corn production	1,250 tonne(s)	1,640 tonne(s)	2,145 tonne(s)
Soya bean cultivation area	49 ha	180 ha	93 ha
Estimated Soya bean yield	1.1 tonne(s)/ha	1.8 tonne(s)/ha	3.9 tonne(s)/ha
Estimated Soya bean production	52 tonne(s)	329 tonne(s)	360 tonne(s)
Mungbean cultivation area	17 ha	15 ha	16 ha
Estimated Mungbean yield	0.9 tonne(s)/ha	0.9 tonne(s)/ha	4.5 tonne(s)/ha
Estimated Mungbean production	15 tonne(s)	14 tonne(s)	72 tonne(s)
Peanut cultivation area	206 ha	112 ha	122 ha
Estimated Peanut yield	1.2 tonne(s)/ha	1.5 tonne(s)/ha	3.4 tonne(s)/ha
Estimated Peanut production	240 tonne(s)	166 tonne(s)	415 tonne(s)
Cassava cultivation area	271 ha	825 ha	4,587 ha
Estimated Cassava yield	9.8 tonne(s)/ha	5.6 tonne(s)/ha	7.7 tonne(s)/ha
Estimated Cassava production	2,656 tonne(s)	4,648 tonne(s)	35,254 tonne(s)
Sweet potatoes cultivation area	105 ha	41 ha	37 ha
Estimated Sweet potatoes yield	3.9 tonne(s)/ha	4.0 tonne(s)/ha	5.7 tonne(s)/ha
Estimated Sweet potatoes	410 tonne(s)	163 tonne(s)	211 tonne(s)

Crops	2006	2007	2008
production			
Sesame cultivation area	1,181 ha	875 ha	818 ha
Estimated Sesame yield	0.8 tonne(s)/ha	0.8 tonne(s)/ha	1.6 tonne(s)/ha
Estimated Sesame production	899 tonne(s)	722 tonne(s)	1,268 tonne(s)

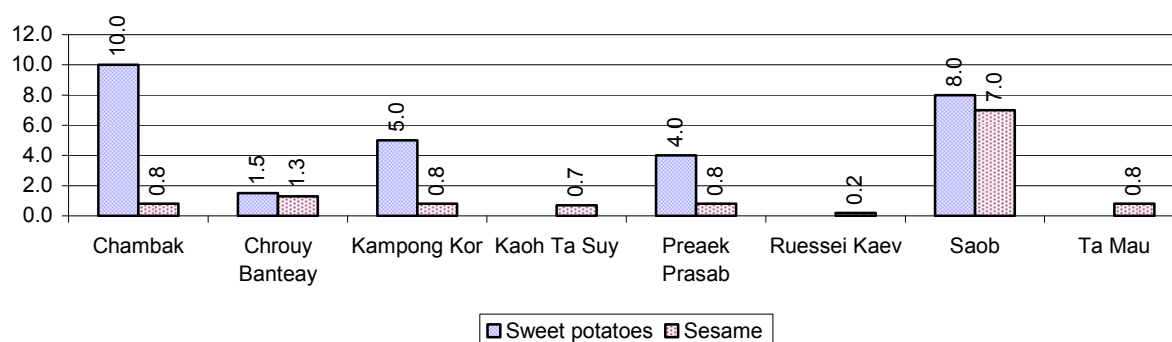
2.5.18 Yields of Corn, Soya beans and Mungbeans in tonne(s)/ha, by Commune, in 2008



2.5.19 Yields of Peanuts and Cassava in tonne(s)/ha by Commune, in 2008



2.5.20 Yields of Sweet Potatoes and Sesame in tonne(s)/ha, by Commune, in 2008



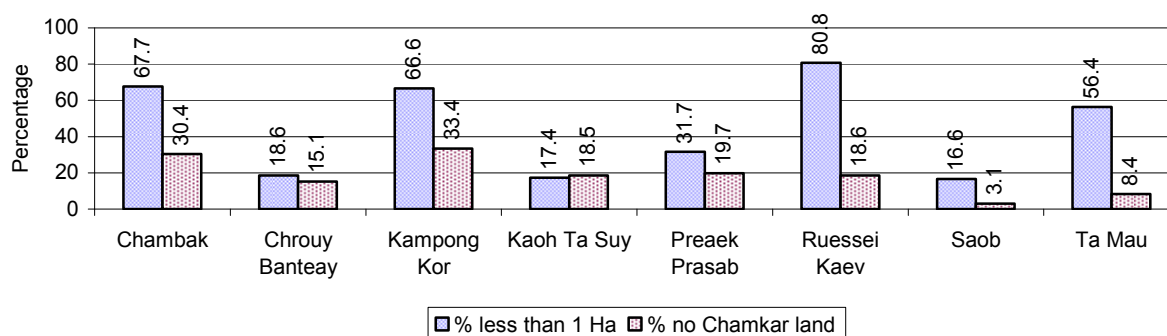
2.5.21 Percentage Farmers who own less than 1 Ha or no Chamkar land

Description	2006 %	2007 %	2008	
			%	Number
Families, who own less than 1ha of Chamkar land	45%	50%	49%	1,633 families
Families, with no Chamkar land	23%	19%	18%	618 families

Note 1: Calculated as a percentage of the total number of families whose main occupation is Chamkar (not rice) farming

Note 2: Chamkar land is no-rice land, i.e. other crops

2.5.22 Percentage Farmers owning less than 1 ha or no Chamkar land, by Commune, in 2008



Note: Percentage is calculated among families, who Chamkar farm as a main occupation, not the total population of the commune.

2.5.23 Percentage of Families raising Cattle/Buffalo, over 3 years

Description	2006 %	2007 %	2008	
			%	Number
Families raising cattle/buffalo	70%	69%	70%	9,428 families
Families raising cattle/buffalo as labor forces	52%	53%	56%	7,499 families

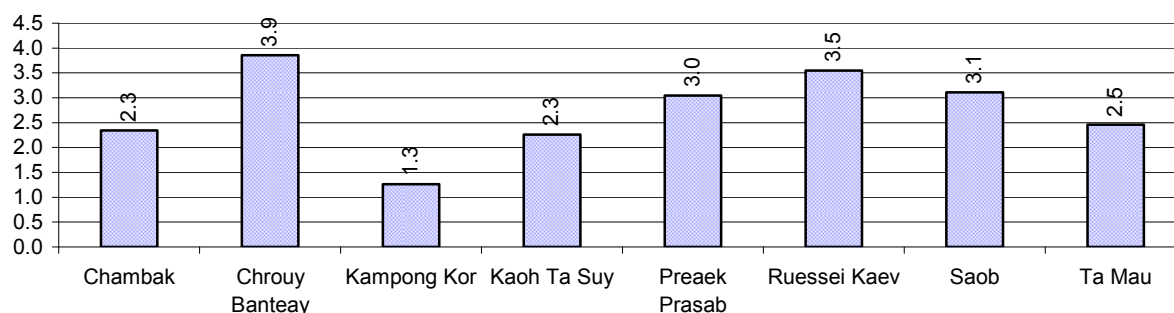
Note: Calculated against the total number of families.

2.5.24 Number of Cattle/buffalo being raised, over 3 years

Description	2006	2007	2008
Total number of cattle/buffalo	22,688 head(s)	24,427 head(s)	26,776 head(s)
Average cattle/buffalo per families	2.6 head(s)/families	2.7 head(s)/families	3 head(s)/families

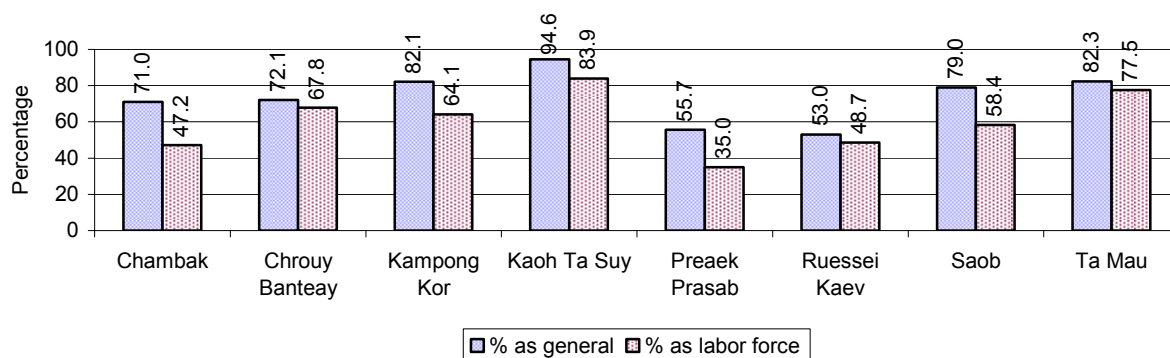
Note: Calculated by dividing total number of cattle/buffalo by total number of cattle/buffalo raising families

2.5.25 Average number of Cattle/Buffalo per Family, by Commune, in 2008



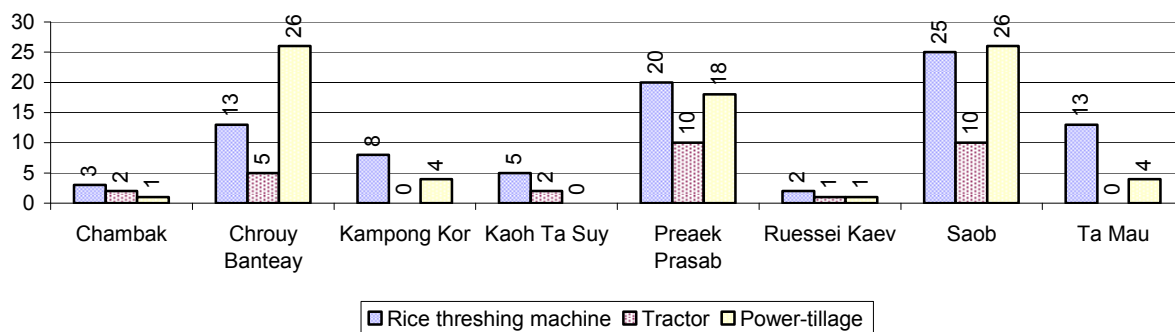
Note: Calculated by dividing total number of cattle/buffalo by total number of cattle/buffalo raising families

2.5.26 Percentage Families raising Cattle/Buffalo, for general and labor purposes in 2008, by Commune



Note: Calculated using the total number of families raising cattle/buffalo against the total number of families.

2.5.27 Type and number of agricultural Machines, by Commune, in 2008

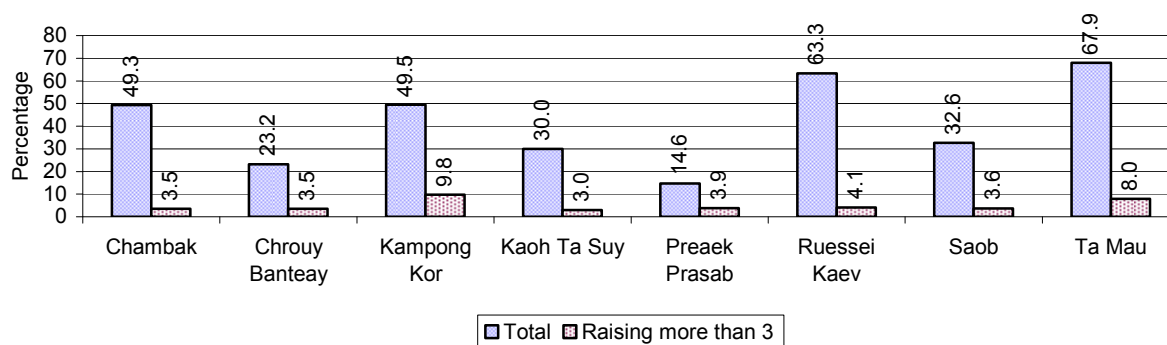


2.5.28 Livestock-producing Households over 3 years

Description	2006 %	2007 %	2008	
			%	Number
Total number of families raising pigs	48%	42%	38%	5,133 families
number of families raising more than 3 pigs	5%	5%	5%	637 families
Total number of families raising chickens	82%	81%	81%	10,910 families
number of families raising more than 3 chickens	66%	67%	63%	8,510 families
Total number of families raising ducks	3%	2%	3%	391 families
number of families raising more than 5 ducks	2%	1%	2%	242 families
Total number of families raising goats or sheep	0%	0%	0%	12 families
Total number of families raising horses	1%	1%	1%	86 families

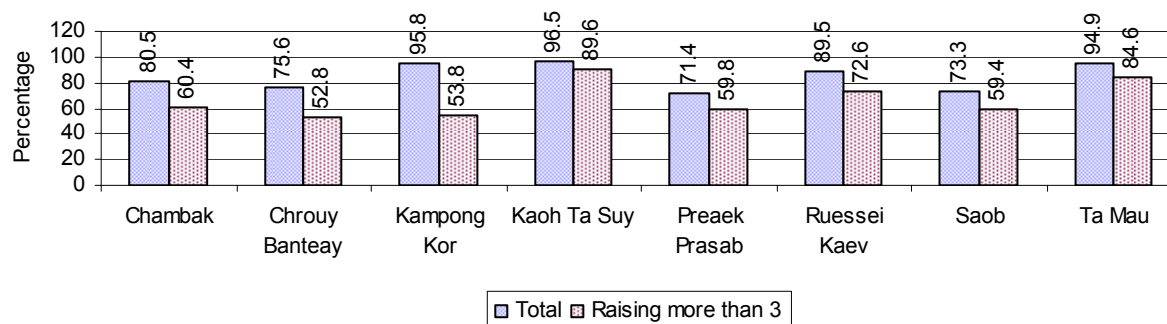
Note: Calculated against the total number of families

2.5.29 Percentage Families raising Pigs, by Commune, in 2008



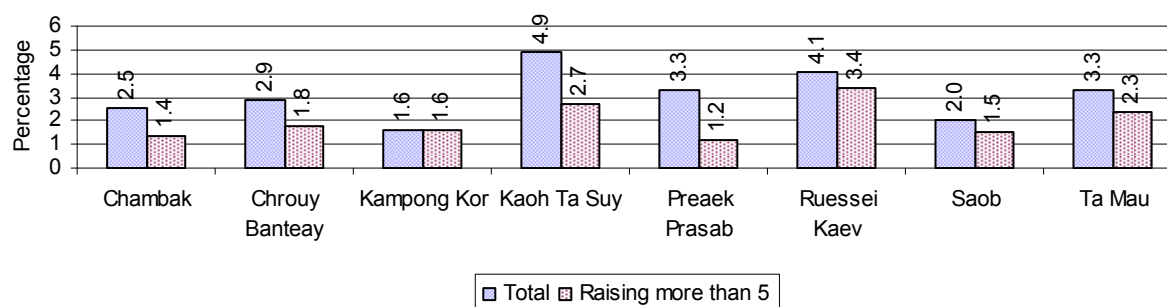
Note: Calculated against the total number of families in the commune

2.5.30 Percentage Families raising Chickens, by Commune, in 2008



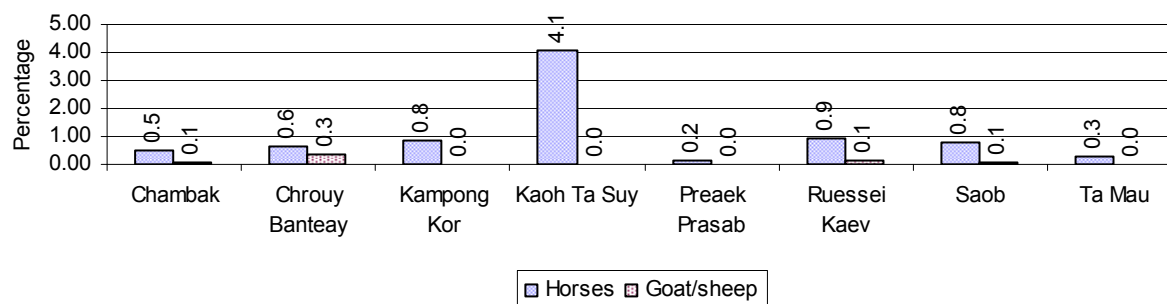
Note: Calculated against the total number of families in the commune

2.5.31 Percentage Families raising Ducks, by Commune, in 2008



Note: Calculated against the total number of families in the commune

2.5.32 Percentage Families raising Horses, Goats or Sheep, by Commune, in 2008

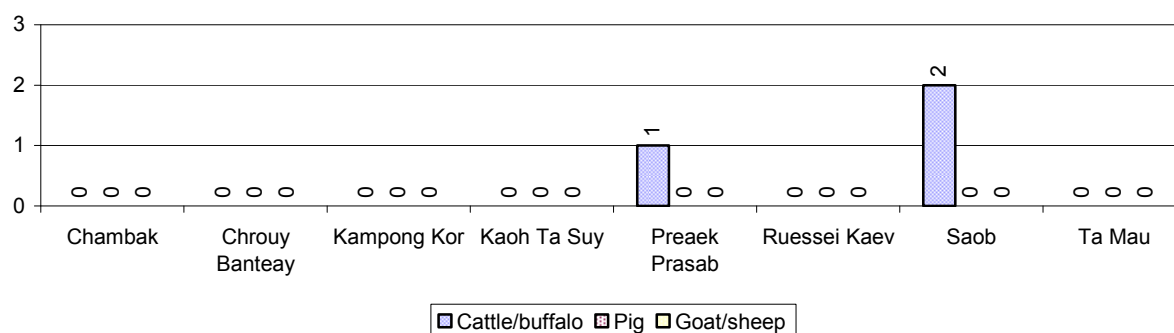


Note: Calculated against the total number of families in the commune

2.5.33 Livestock Farms over 3 years

Description	2006	2007	2008
Number of cattle/buffalo farms	2 farm(s)	2 farm(s)	3 farm(s)
Number of pig farms	3 farm(s)	6 farm(s)	0 farm(s)
Number of goat/sheep farms	1 farm(s)	0 farm(s)	0 farm(s)
Number of chicken farms	1 farm(s)	0 farm(s)	0 farm(s)
Number of duck farms	1 farm(s)	0 farm(s)	0 farm(s)

2.5.34 Number Livestock Farms, by Commune in 2008



Note: Number of farms are recorded by the village chief, not by counting number of livestock in each farm

2.5.35 Number Chicken and Duck Farms, by Commune, for 2008

There were no farms of this type in this District in 2008

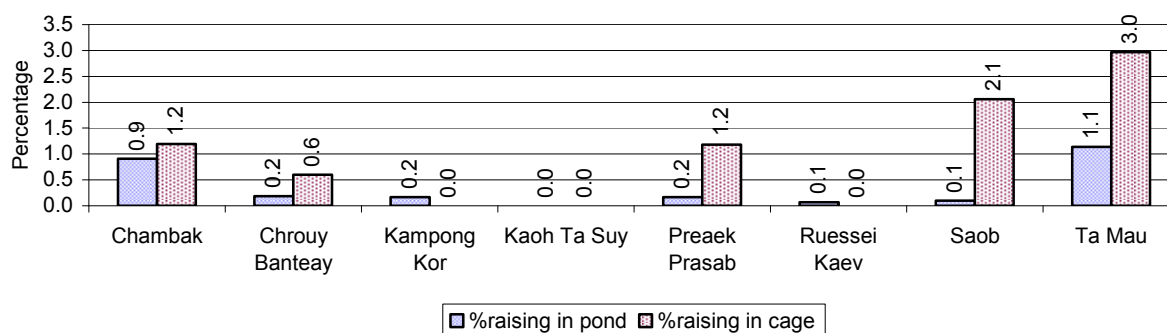
Note: Number of farm places recorded by village chief, not by counting number of livestock in each farm

2.5.36 Families raising Fish over 3 years

Description	2006	2007	2008
Total number of families raising fish	162 families	219 families	205 families
% families raising fish	1%	2%	2%
Number families raising fish in pond	32 families	23 families	48 families
% families raising fish in pond	0%	0 %	0%
Number fish pond	33 pond(s)	23 pond(s)	61 pond(s)
No. of ponds per family	1.0 pond/families	1.0 pond/families	1.3 pond/families
Number of families raising fish in cage	130 families	196 families	157 families
%families raising fish in cage	1 %	2 %	1%
Number of fish cage	134 cage(s)	203 cage(s)	167 cage(s)
No. of fish cage per family	1.0 cage /families	1.0 cage /families	1.1 cage /families

Note: % of families raising fish or fish in ponds or cages is calculated a percentage of the total number of families.

2.5.37 Percentage of Families raising Fish, by Commune, in 2008



Note: Calculated as a percentage of the total number of families in the commune.

2.5.38 Shrimp and Prawn Farming over 3 years

Description	2006	2007	2008
Number of families raising shrimps	0 families	0 families	0 families
% Families raising shrimps	0%	0%	0%
Number of shrimp ponds	0 pond	0 pond	0 pond
Total area raising shrimps	0 ha	0 ha	0 ha
Area per family	-ha/families	-ha/families	-ha/families
Number of families raising prawns	0 families	0 families	0 families
% families raising prawns	0%	0%	0%
Number prawn ponds	0 pond	0 pond	0 pond
Ponds per families	- pond/families	-pond/families	-pond/families
Number of prawn cages	0 cage	0 cage	0 cage
Cages per families	0 cage /families	0 cage /families	0 cage /families

Note: Percentage of families raising either prawns or shrimp is calculated against the number of families, who do aquaculture farming, NOT the total population.

2.5.39 Numbers of Families raising Shrimps and number of Shrimp Ponds, by Commune, in 2008

There were none of these in this District in 2008

2.5.40 Number of Families raising Prawn and Number of Prawn Ponds/Cages, by Commune, in 2008

There were none of these in this District in 2008

3 Social Aspects

3.1 Education

3.1.1 Kindergarten in the District over 3 years

Description	2006	2007	2008
Number of community kindergarten schools	0 school(s)	0 school(s)	0 school(s)
Number of community kindergarten class rooms	0 room(s)	0 room(s)	0 room(s)
Number of community kindergarten classes	0 class(es)	0 class(es)	0 class(es)
Number of community kindergarten teachers	0 person(s)	0 person(s)	0 person(s)
Number of women community kindergarten teachers	0 women	0 women	0 women
Number of state and private kindergarten schools	12 school(s)	17 school(s)	16 school(s)
Number of state and private kindergarten class rooms	22 room(s)	24 room(s)	24 room(s)
Number of state and private kindergarten classes	22 class(e(s)	24 class(es)	24 class(es)
Number of state and private kindergarten teachers	30 person(s)	35 person(s)	38 person(s)
Number of women state and private kindergarten teachers	30 women	35 women	38 women

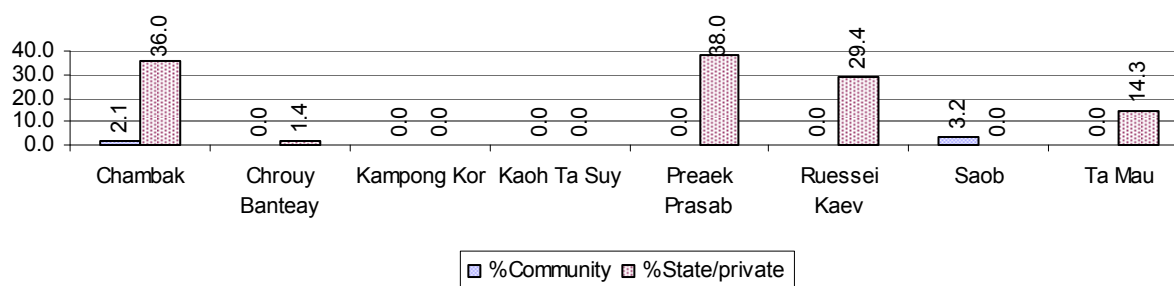
3.1.2 Percentage enrolment at Kindergarten level over 3 years

This table shows the percentage of the total 3-5 year old population attending kindergarten.

Description	2006 %	2007 %	2008	
			%	Number
Total percentage of children, 3-5 yrs, go to kindergarten	17%	18%	17%	852 person(s)
Percentage of children, 3-5 yrs, go community kindergarten	5%	3%	1%	38 person(s)
Percentage children, 3-5 yrs, go state/private kindergarten	13%	15%	16%	814 person(s)

Note: Calculated against the total for that age group

3.1.3 Percentage of Children 3-5 yrs attending Kindergarten, by Commune, in 2008



3.1.4 Basic Education over 3 years

Primary School

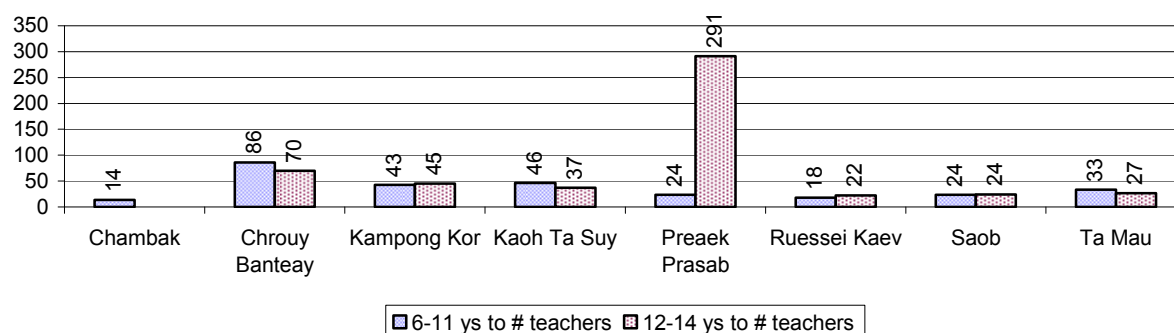
Description	2006	2007	2008
Number of primary schools	53 school(s)	55 school(s)	49 school(s)
Number of primary school rooms	255 room(s)	252 room(s)	245 room(s)
Number of primary classes	335 class(es)	330 class(es)	320 class(es)
Number of primary teachers	368 person(s)	344 person(s)	298 person(s)
Ratio of children 6-11 yrs to school	160	146	168
Ratio of children 6-11 yrs to school room	33	32	34
Ratio of children 6-11 yrs to class	25	24	26
Ratio of children 6-11 yrs to teacher	23	23	28

Note: According to education norm, children 6-11 yrs should attend primary school, while 12-14 yrs should be in lower secondary school, but in reality this varies.

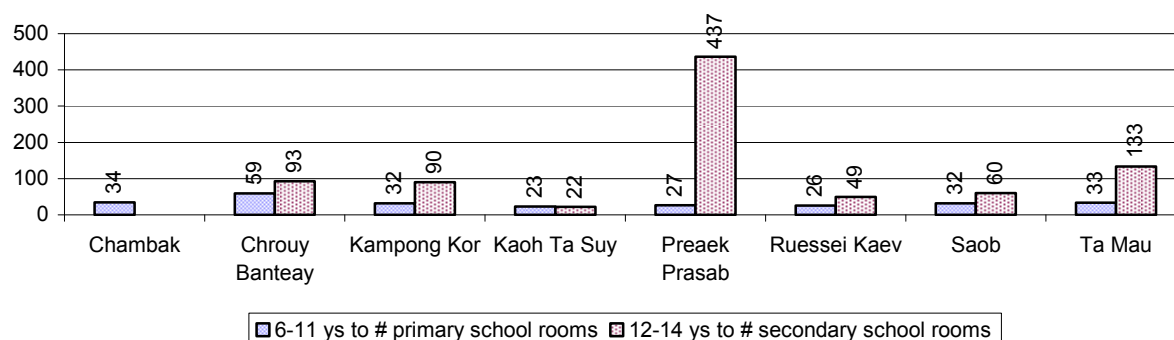
Lower Secondary School

Description	2006	2007	2008
Number of lower secondary schools	9 school(s)	8 school(s)	9 school(s)
Number of lower secondary school rooms	46 room(s)	42 room(s)	46 room(s)
Number of lower secondary classes	55 class(es)	47 class(es)	49 class(es)
Number of lower secondary teachers	114 person(s)	70 person(s)	98 person(s)
Ratio children 12-14 yrs to school	528	578	499
Ratio of children 12-14 yrs to school room	103	110	98
Ratio of children 12-14 yrs to class	86	98	92
Ratio of children 12-14 yrs to teacher	42	66	46

3.1.5 Ratio of 6-11 year old and 12-14 year old Children to number of Teachers, by Commune, in 2008



3.1.6 Ratio of 6-11 year old and 12-14 year old Children to number of School Rooms, by Commune, in 2008



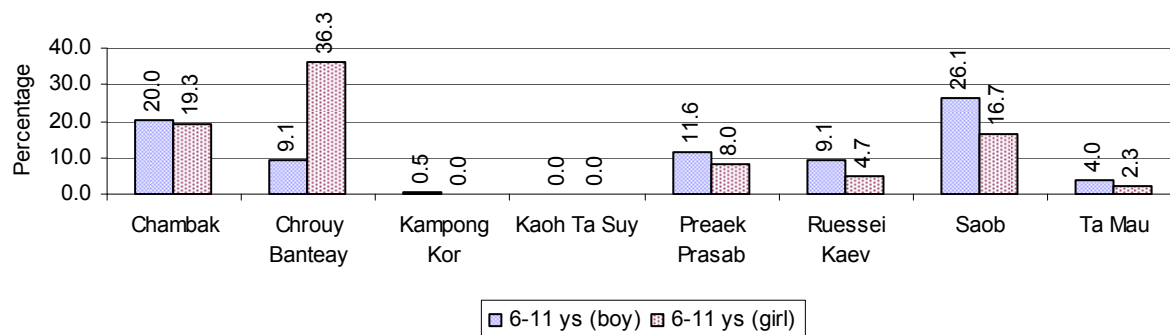
3.1.7 Enrolment status at Primary Level over 3 years

Description	2006 %	2007 %	2008	
			%	Number
Total children aged 6-11 years old	14%	13%	13%	8,253 person(s)
Total children aged 6-11 who are in school	87%	85%	86%	7,121 person(s)
Total children aged 6-11 who are not in school	13%	15%	14%	1,132 person(s)
Total girls aged 6-11 years old	13%	12%	13%	4,206 person(s)
Total girls aged 6-11 who are in school	85%	88%	84%	3,545 person(s)
Total girls aged 6-11 who are not in school	15%	12%	16%	661 person(s)
Total boys aged 6-11 years old	14%	13%	13%	4,047 person(s)
Total boys aged 6-11 who are in school	88%	81%	88%	3,576 person(s)
Total boys aged 6-11 who are not in school	12%	19%	12%	471 person(s)

Note 1: Percentage is calculated on the basis of the total number of children within 6-11 year age group for the first 3 rows and for the total girls and the total boys aged 6-11 yrs.

Note 2: Number of girls aged 6-11 who are in & not in school is calculated against the total number of girls aged 6-11 yrs. Number boys, 6-11 yrs who are in & not in school are calculated against the total number of boys aged 6-11 yrs.

3.1.8 Percentage of 6-11 year old Children not in School, by Commune, in 2008



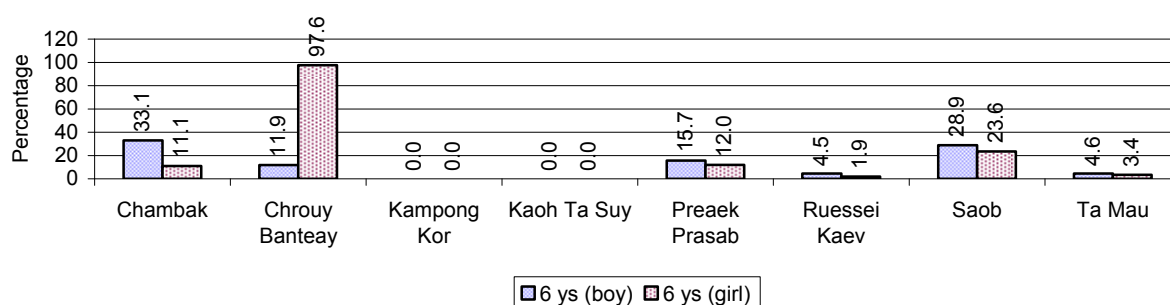
Note: calculated on the basis of the total number of children within 6-11 year age group in the commune.

3.1.9 Enrolment of 6 year old Children over 3 years

Description	2006 %	2007 %	2008	
			%	Number
Total % and number of children aged 6 years old	4%	4%	4%	2,529 person(s)
Total % of children aged 6 years old in school	86%	82%	80%	2,029 person(s)
Total % of children aged 6 years old not in school	14%	18%	20%	500 person(s)

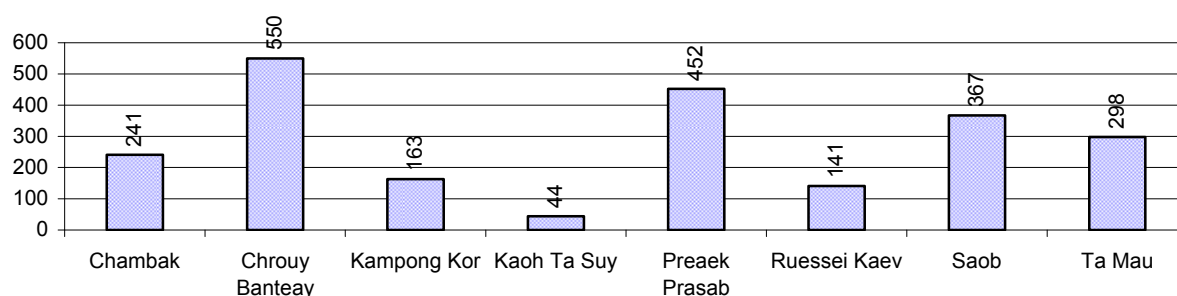
Note: First row calculated as a percentage of total population. Second and third row calculated as a percentage of the total number of 6 year olds.

3.1.10 Percentage of 6 year old Children not in School, by Commune, in 2008



Note: Calculated as a percentage of total 6 year old population

3.1.11 Number of 5 year old Children in each Commune in 2008

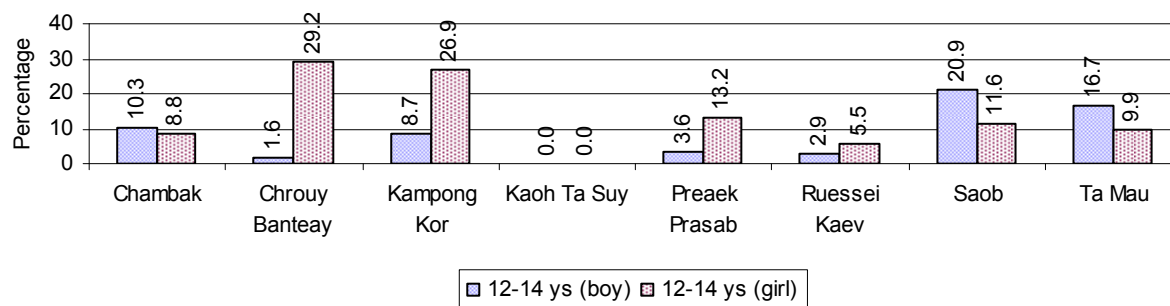


3.1.12 Enrolment at Lower Secondary Level over 3 years

Description	2006 %	2007 %	2008	
			%	Number
Total children aged 12-14 years old	8%	7%	7%	4,490 person(s)
Children aged 12-14 years old in school	86%	86%	88%	3,939 person(s)
Children aged 12-14 years old not in school	14%	14%	12%	551 person(s)
Total girls aged 12-14 years old	7%	7%	7%	2,348 person(s)
Girls aged 12-14 years old in school	87%	88%	85%	1,986 person(s)
Girls aged 12-14 years old not in school	13%	12%	15%	362 person(s)
Total boys aged 12-14 years old	8%	7%	7%	2,142 person(s)
Boys aged 12-14 years old in school	85%	83%	91%	1,953 person(s)
Boys aged 12-14 years old not in school	15%	17%	9%	189 person(s)

Note: Percentage is calculated on the basis of number of the total number of children within 12-14 yrs group, except for the first row of each section which is calculated on the basis of the total population.

3.1.13 Percentage of 12-14 year olds not in School, by Commune, in 2008



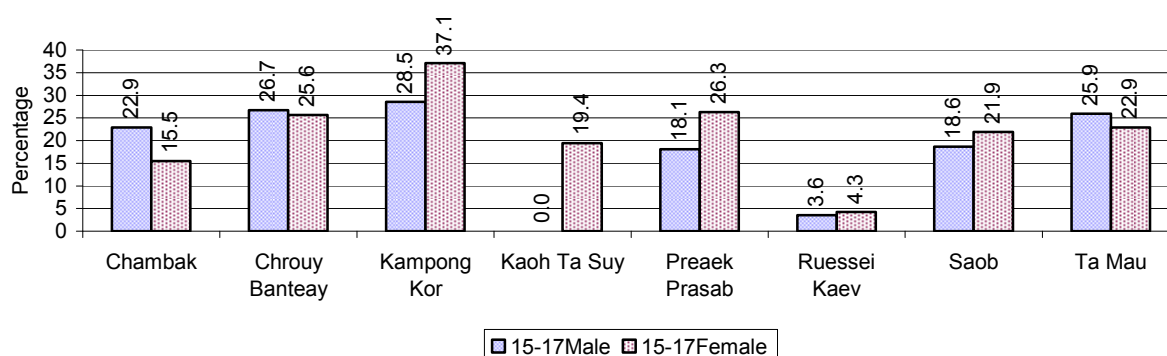
Note: Calculated as a percentage of the total 12-14 year old population in each commune

3.1.14 Upper Secondary Schools over 3 years

Description	2006	2007	2008
Number of upper secondary schools	2 school(s)	2 school(s)	2 school(s)
Number of upper secondary school rooms	34 room(s)	57 room(s)	55 room(s)
Number of upper secondary classes	37 class(es)	59 class(es)	58 class(es)
Number of upper secondary teachers	105 person(s)	131 person(s)	120 person(s)
Ratio of 15-17 yr olds to number of school	2,610	2,434	2,563
Ratio of 15-17 yr olds to number of school room	154	85	93
Ratio of 15-17 yr olds to number of classes	141	82	88
Ratio of 15-17 yr olds to number of teacher	50	37	43

3.1.15 Enrolment of 15-17 year old teenagers over 3 years

Description	2006	2007	2008
Number of teenage, 15-17 years old	5,220 person(s)	4,867 person(s)	5,126 person(s)
Number of teenage, 15-17 years old, who are not studying	966 person(s)	1,236 person(s)	1,082 person(s)
Percentage of teenage, 15-17 years old not studying	19%	25%	21%

3.1.16 Percentage of 15-17 year old Teenagers not at School, by Commune, in 2008**3.1.17 Literacy Classes as of 2008**

Literacy classes	Organized by:		Other Program(s)	Total
	PDoEYS	NGOs		
Number of On-going literacy classes	0 class(es)	0 class(es)	0 class(es)	0 class(e(s)
Number of literacy students in on-going classes	0 person(s)	0 person(s)	0 person(s)	0 person(s)
Completed literacy class(es)	0 classes	0 classes	0 classes	0 classes
Number of literacy students that have completed literacy classes	0 person(s)	0 person(s)	0 person(s)	0 person(s)
Number of students that passed	0 person(s)	0 person(s)	0 person(s)	0 person(s)

3.1.18 Number of on-going and completed Literacy Classes, by Commune, in 2008

There were no classes in this District in 2008

3.1.19 Students of on-going & completed Literacy Classes, by Commune, in 2008

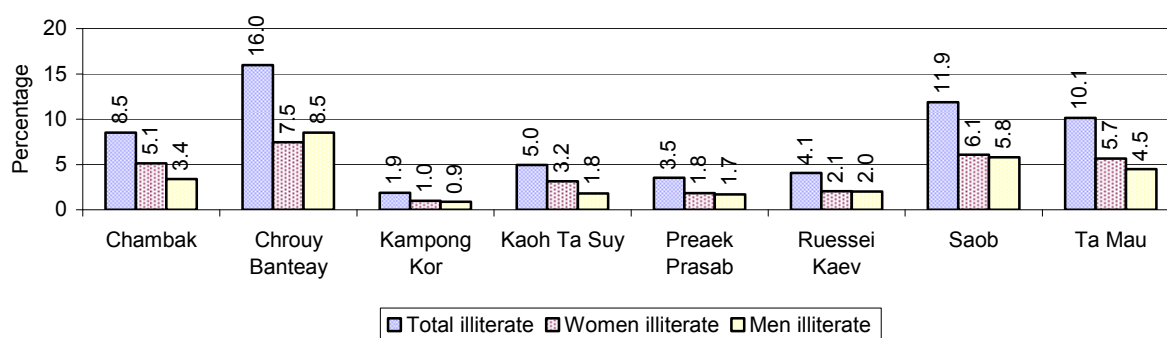
There were no students who had taken or were taking literacy classes in this District in 2008

3.1.20 Percentage of illiterate People between 15-60, over 3 years

Illiteracy Status	2006	2007	2008	
	%	%	%	Number
Illiterate people, 15-60 years old	11%	9%	8%	3,009 person(s)
Illiterate females, 15-60 years old	6%	5%	4%	1,569 person(s)
Illiterate people, 15-17 years old	6%	5%	5%	232 person(s)
Illiterate females, 15-17 years old	3%	3%	2%	102 person(s)
Illiterate people, 18-24 years old	8%	5%	4%	320 person(s)
Illiterate females, 18-24 years old	4%	3%	2%	182 person(s)
Illiterate people, 25-60 years old	14%	11%	10%	2,457 person(s)
Illiterate females, 25-60 years old	7%	6%	5%	1,285 person(s)

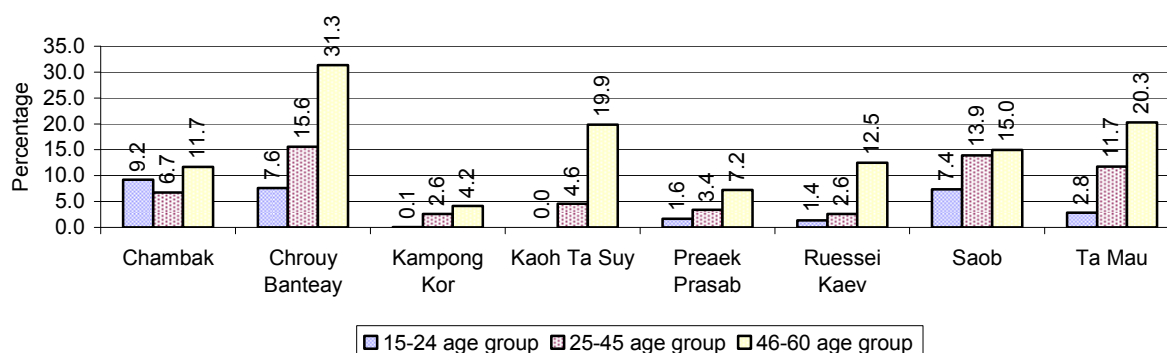
Note: Percentage is calculated on the basis of number of people in age each group.

3.1.21 Percentage illiterate People among 15-60 yrs old, by Commune, in 2008



Note: Percentages are calculated on the basis of number of people in that age group.

3.1.22 Percentage illiterate People for 15-24 yrs, 25-45 yrs and 46-60 yrs, by Commune, in 2008



Note: Percentage of illiterate people in each age group is calculated on the basis of number of people in that age group.

3.2 Health

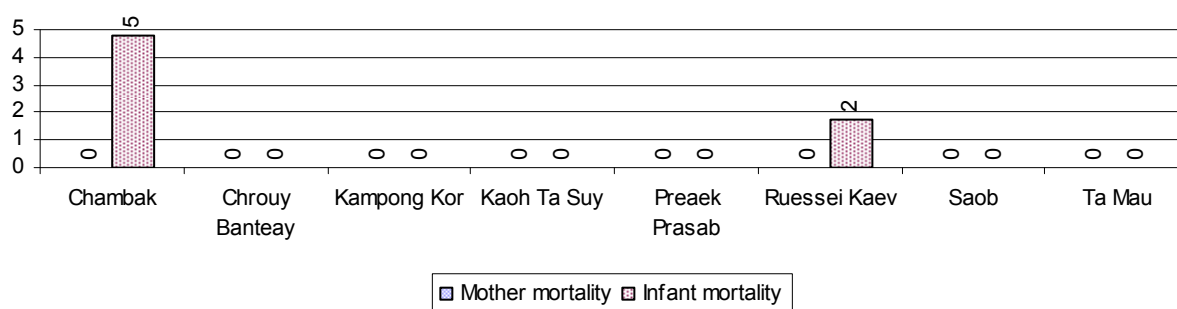
3.2.1 Health Situation of Women and Children, over 3 years

Description	2006	2007	2008
Number families with a birth during the year	916 families	877 families	811 families
Number of women who had their baby delivered by a TBA	497 person(s)	428 person(s)	353 person(s)
Percentage of women who had their baby delivered by a TBA	54 %	49 %	44 %
Number of women who had their baby delivered by a midwife	419 person(s)	449 person(s)	458 person(s)
Percentage of women had their baby delivered by a midwife	46 %	51 %	56 %
Number of mothers who died within 1 month of giving birth	0 person(s)	2 person(s)	0 person(s)
Mothers who died within 1 month of giving birth per 100,000 families having a delivery	0	228	0
Number of infants born during the year	913 person(s)	922 person(s)	811 person(s)
Number of Infants who died within 1 month	14 person(s)	8 person(s)	3 person(s)
Infants mortality within 1 month per 1,000 births	15	9	4

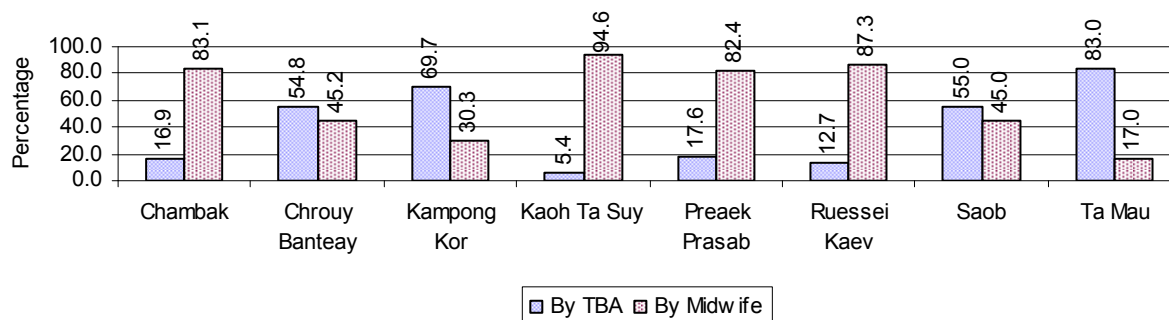
Description	2006	2007	2008
Number of children who died below the age of 5.	28 person(s)	7 person(s)	13 person(s)
Number of infants, aged 9-12 months, born during the year	564 person(s)	542 person(s)	497 person(s)
Nr. infants, aged 9-12 months, not receiving full immunization	43 person(s)	104 person(s)	31 person(s)
% of 9-12 months infants, not receiving full immunization	8 %	19 %	6 %

Note: TBA = Traditional Birth Attendant

3.2.2 Mothers dying within 0 days to 1 month of giving Birth and Infants dying within 1 month in 2008, by Commune

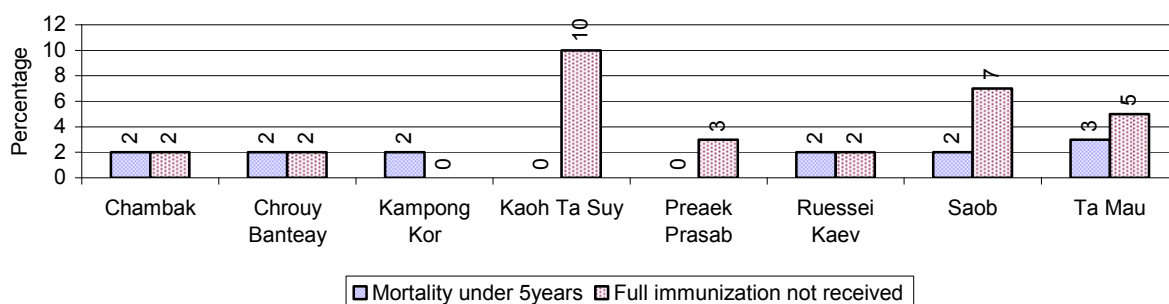


3.2.3 Percentage of Women delivering with a TBA or Midwife, by Commune



Note: Calculated as a percentage of total deliveries

3.2.4 Percentage of Children dying below 5 & of 9-12 months not receiving full Immunization, by Commune, in 2008



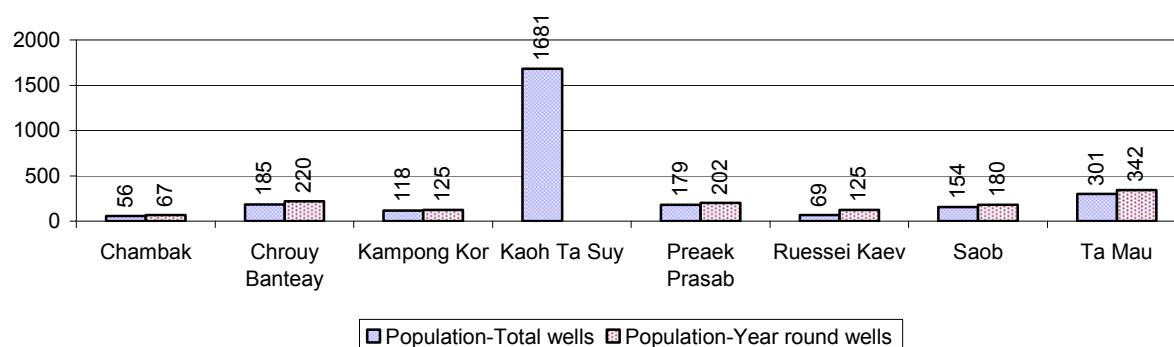
Note: Mortality rate calculated as a percentage of the total 5 year old population. Lack of immunization received calculated as a percentage of the total number 9-12 months olds there are

3.3 Water and Sanitation

3.3.1 Number of different types of Wells over 3 years

Type of wells	Number of wells by year		
	2006	2007	2008
<i>Total number of pumped or mixed wells</i>	481	200	179
Year-round usable pumped or mixed wells	456	155	155
Dry season unusable pump or mixed wells	25	45	24
Pump or mixed wells needing repair/rehabilitation	64	67	57
<i>Total number of ring wells</i>	515	331	340
Year-round usable ring wells	445	257	260
Dry season unusable ring wells	70	74	80
Ring wells needing repair/rehabilitation	50	56	60
<i>Total number of unprotected dug wells</i>	28	43	53
Year-round usable unprotected dug wells	26	21	29
Dry season unusable unprotected dug wells	2	22	24

3.3.2 Ratio of People to Wells, by Commune, in 2008

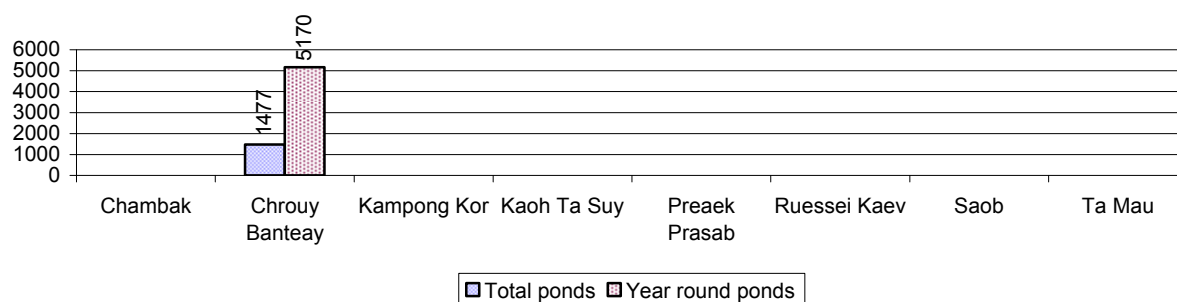


Note: Year-round wells excluding unprotected wells

3.3.3 Potable Ponds over 3 years

Type of Pond	2006	2007	2008
<i>Total number of normal-type ponds</i>	2 pond	3 pond	7 pond
Year-round usable normal-type ponds	1 pond	1 pond	2 pond
Dry season unusable normal-type ponds	1 pond	2 pond	5 pond
Normal-type ponds needing repair/rehabilitation	2 pond	3 pond	6 pond
<i>Total number of filter ponds</i>	3 pond	0 pond	0 pond
Year-round usable filter ponds	3 pond	0 pond	0 pond
Filter ponds, dry season unusable	0 pond	0 pond	0 pond
Filter ponds needing repair/rehabilitate	0 pond	0 pond	0 pond

3.3.4 Ratio of People to normal Ponds, by Commune in 2008



3.3.5 Ratio of People to Filter Ponds, by Commune, in 2008

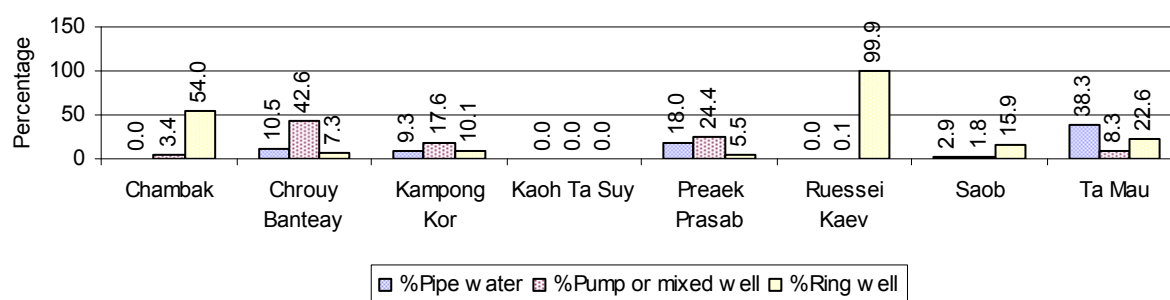
There were no filter ponds in this District in 2008

3.3.6 Source of potable Water for Households, over 3 years

Water sources	2006	2007	2008	
	%	%	%	Number
Families using water from purification system	14%	2 %	11 %	1,539 families
Families using water from pump, mixed wells	22%	18 %	16 %	2,089 families
Families using water from ring wells and open dug wells	28%	27 %	26 %	3,482 families
Families using water from pond	1%	2 %	2 %	205 families
Families using water from rain water storage	1%	0 %	6 %	809 families
Families using water from rivers, lakes, natural ponds and reservoirs	34%	52 %	40 %	5,333 families

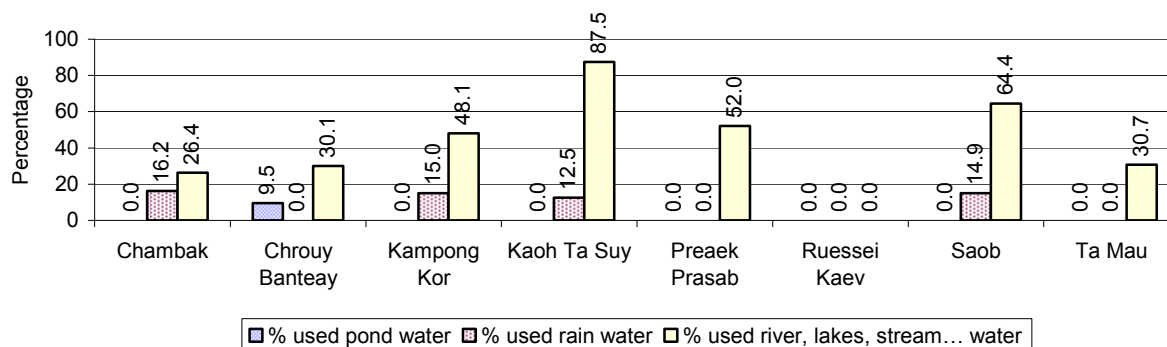
Note: Calculated as a percentage of the total number of families.

3.3.7 Percentage Families using different Water Sources, by Commune, in 2008



Note: Calculated as a percentage of the total number of families in each commune

3.3.8 Percentage Families using Water from Rain Water Storage, Ponds and natural Sources (rivers/lakes/natural ponds/reservoirs), by Commune, 2008



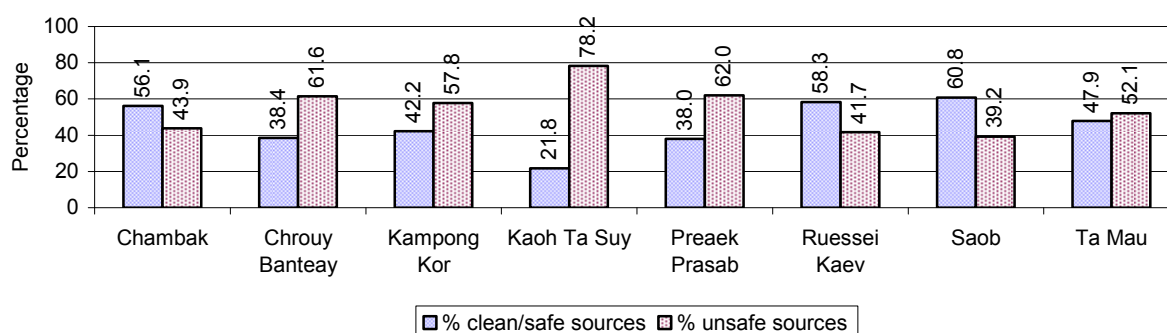
Note: Calculated as a percentage of the total number of families in each commune

3.3.9 Drinking Water Sources in the dry Season over 3 years

Percentage Families that get drinking water from:	2006	2007	2008	
	%	%	%	Number
from clean/safe sources	42 %	15 %	47 %	6,334 families
from unsafe sources	58 %	85 %	53 %	7,123 families

Note: Calculated as a percentage of the total number of families.

3.3.10 Percentage Families using safe and unsafe Water Sources in the dry Season, by Commune, in 2008



Note: Calculated as a percentage of the total number of families in each commune.

3.3.11 Drinking Water Purification by Households, over 3 years

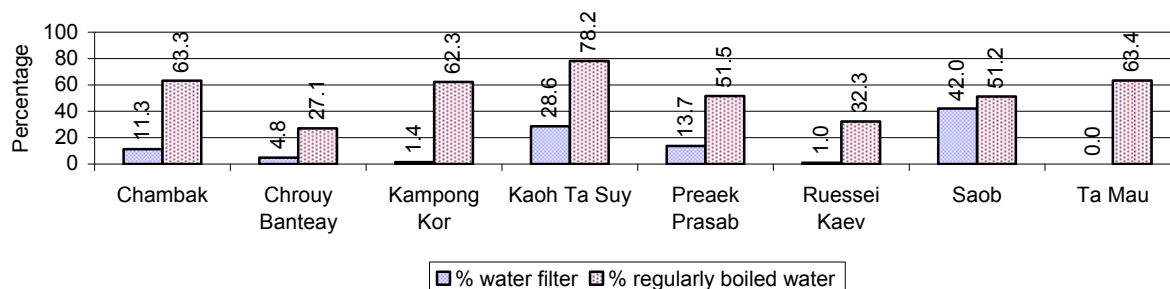
This table shows the different ways families make water safe for drinking.

Families, who:	2006	2007	2008	
	%	%	%	Number
Filter water for drinking	10%	11%	13 %	1,684 families
Boil water for drinking	51%	51%	50 %	6,744 families

Note: Calculated as a percentage of the total number of families

3.3.12 Percentage Families filtering Water or regularly boiling Water, by Commune, in 2008

This graph shows the different ways families make drinking water safe.



Note: Calculated on as a percentage of the total number of families in each commune.

3.3.13 Families' access to Water, over 3 years

Families access to water	2006	2007	2008	
	%	%	%	Number
Families with water at home or in less then 150m	60%	48%	40 %	5,341 families
Families with water 150m or more away from home	30%	17%	8 %	1,062 families

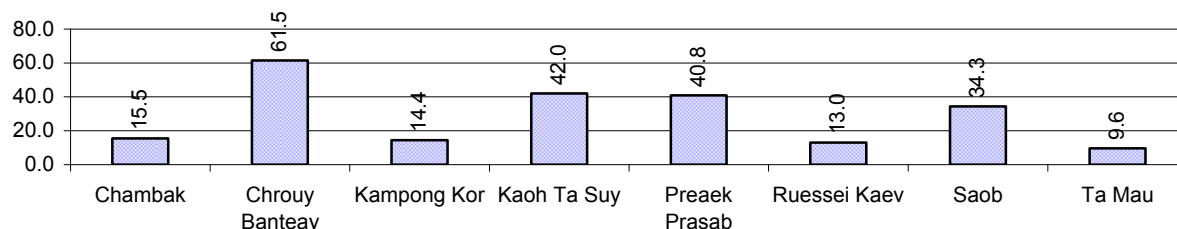
Note: Calculated as a percentage of the total number of families

3.3.14 Ratio of people to Latrines over 3 years

Description	2006	2007	2008	
	Ratio	Ratio	Ratio	Number
Ratio of people to latrines	22.7	19.3	20.9	3,081.0

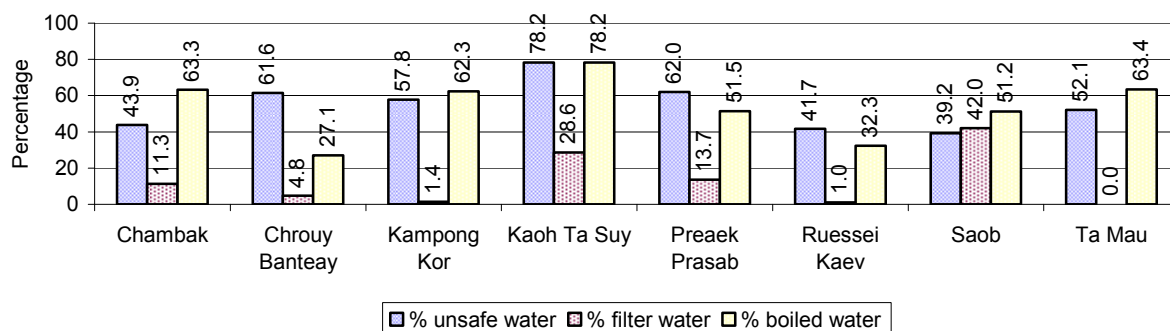
Note: Ratio calculated by dividing the number of houses with latrines by the total population

3.3.15 Ratio of People to Latrines, by Commune, in 2008



Note: Ratio calculated by dividing the number of houses with latrines by the total population in a Commune.

3.3.16 Percentage of Families drinking boiled, filtered or unsafe Water, by Commune, in 2008



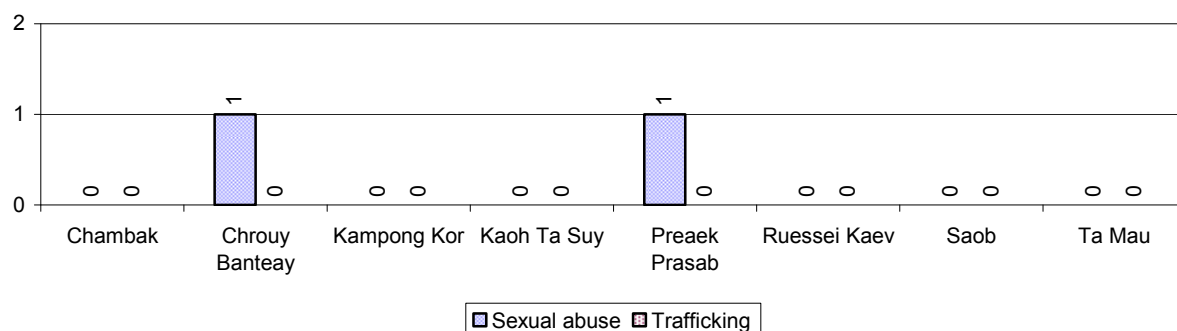
Note: Calculated as a percentage of the total number of families in each commune.

3.4 Vulnerable groups

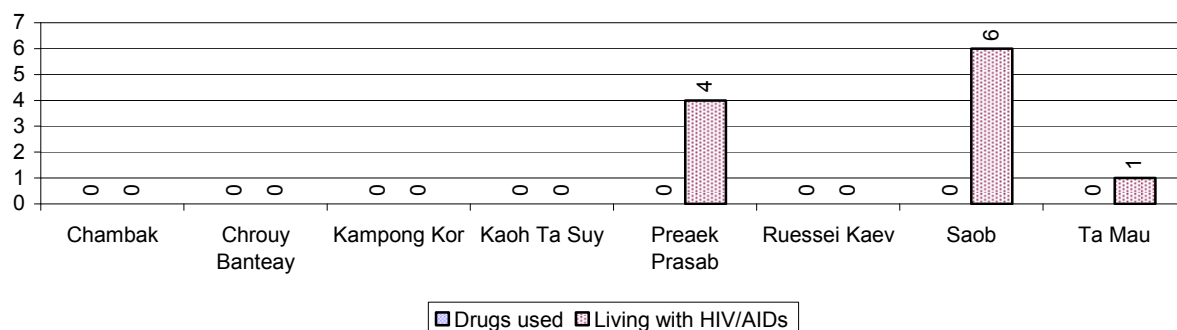
3.4.1 Vulnerable Groups in need of special Protection over 3 years

Vulnerable groups	2006	2007	2008
Victims of sexual abuse	2 person(s)	1 person(s)	2 person(s)
Victims of human trafficking	0 person(s)	2 person(s)	0 person(s)
Families with family member(s) using drugs	0 families	0 families	0 families
Families with family member(s) living with HIV/AIDS	14 families	8 families	11 families
Children under 18 yrs old whose parent died of AIDS	14 person(s)	15 person(s)	15 person(s)
Orphaned/abandoned children under 18 yrs old (all cases)	432 person(s)	338 person(s)	775 person(s)
Elderly persons without guardian	149 person(s)	141 person(s)	124 person(s)
Disabled people able to earn an income	101 person(s)	103 person(s)	84 person(s)
Disabled people unable to earn an income	78 person(s)	159 person(s)	82 person(s)
Disabled people under 18 yrs old	44 person(s)	23 person(s)	32 person(s)
Victims of natural disasters	1,838 families	1,457 families	1,842 families
Victims of land mines and unexploded weapons	17 person(s)	8 person(s)	7 person(s)

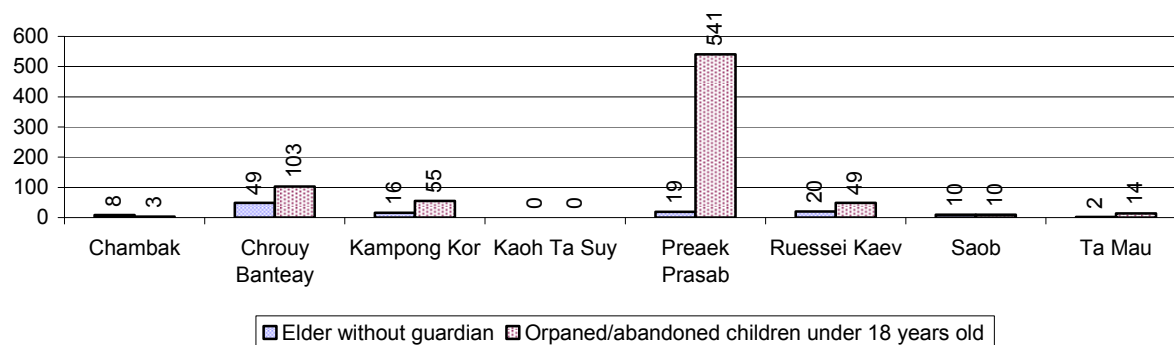
3.4.2 Registered Victims of sexual Abuse or Trafficking, by Commune, for 2008



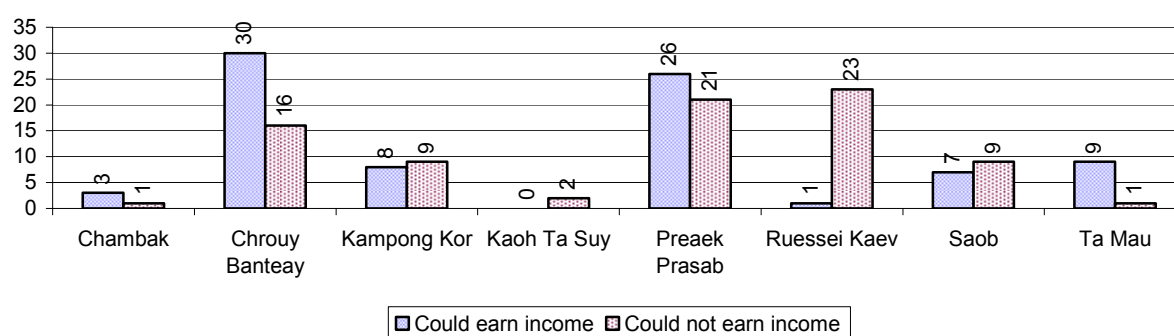
3.4.3 Registered Families with Member(s) using Drugs or living with HIV/AIDS, by Commune, for 2008



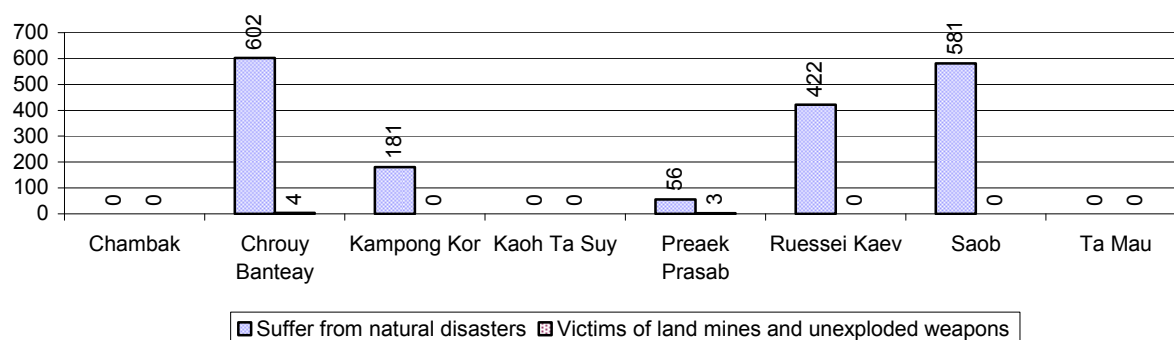
3.4.4 Elderly Persons without a Guardian and orphaned/abandoned Children under 18 years old, by Commune, for 2008



3.4.5 Number of disabled People who could or could not earn an Income, by Commune, for 2008



3.4.6 Number of Families who suffered from natural Disasters, and number of Victims of Land Mines and unexploded Weapons, by Commune, in 2008



3.5 Migration

3.5.1 Migration over 3 years

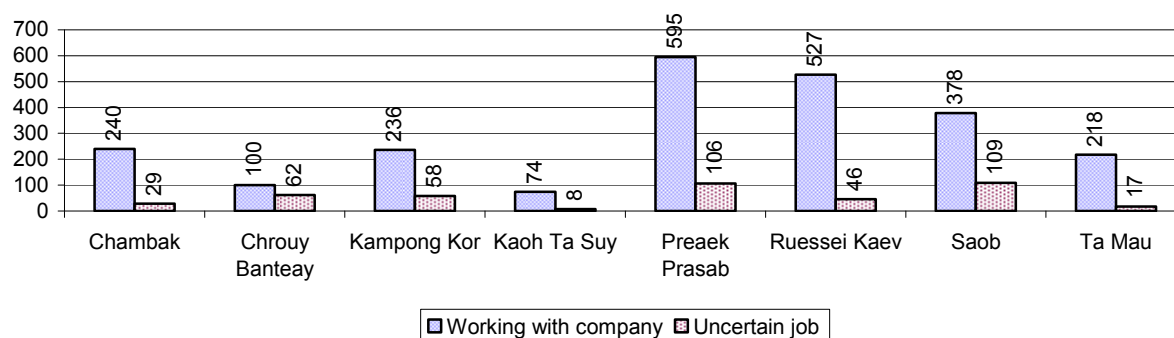
Description	2006	2007	2008
Number of families permanently in-migrated	45families	104 families	81 families
Total number of people	208 person(s)	433 person(s)	371 person(s)
Total number of female	93 person(s)	226 person(s)	201 person(s)
Number of families permanently out-migrated	78 families	65 families	53 families
Total number of people	324 person(s)	271 person(s)	253 person(s)
Total number of female	160 person(s)	143 person(s)	132 person(s)
Number of families staying temporarily	24 families	50 families	67 families
Total number of people	72 person(s)	260 person(s)	222 person(s)
Total number of female	34 person(s)	101 person(s)	107 person(s)

3.5.2 Job Migration

Description	2006	2007	2008
Number of people migrated to work with company/factory	7%	7%	7% 2,368 persons
Number of people migrated to work, but have uncertain jobs	1%	1%	1% 435 persons

Note: Calculated as a percentage of the total population of 18-60 year olds

3.5.3 Number of People working outside their home Villages in a Company/Factory or with an uncertain Job in 2008

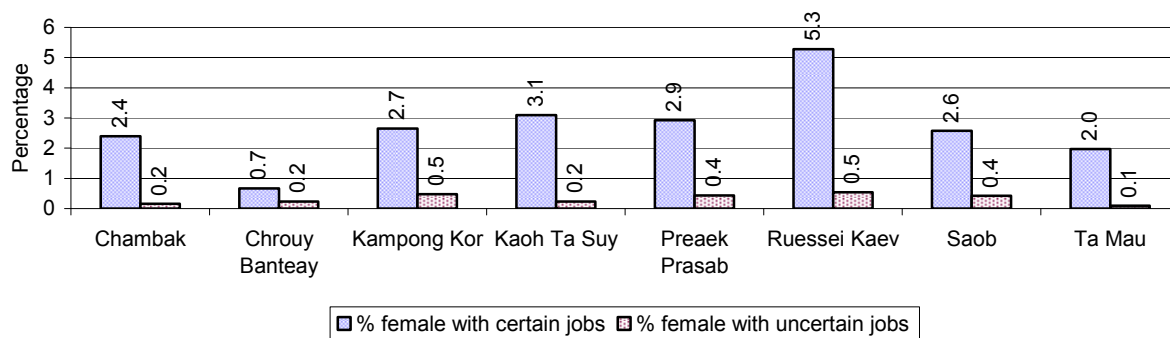


3.5.4 Female migration over 3 years

Description	2006 %	2007 %	2008	
			%	Number
Total number of migrants	4.1%	4.4%	4.4%	2,803 person(s)
Number of female migrants	3.0%	2.9%	2.9%	1,865 person(s)
Total number of migrants, who go to work with company/factory (with certain jobs)	3.3%	3.7%	3.7%	2,368 person(s)
Number of female migrants with certain jobs	2.6%	2.5%	2.6%	1,649 person(s)
Total number of migrants with uncertain jobs	0.7%	0.7%	0.7%	435 person(s)
Number of female migrants with uncertain jobs	0.4%	0.4%	0.3%	216 person(s)

Note: Calculated as a percentage of the total population

3.5.5 Percentage female Migrants with certain and uncertain Jobs, by Commune, in 2008



Note: Calculated as a percentage of the total population of the commune

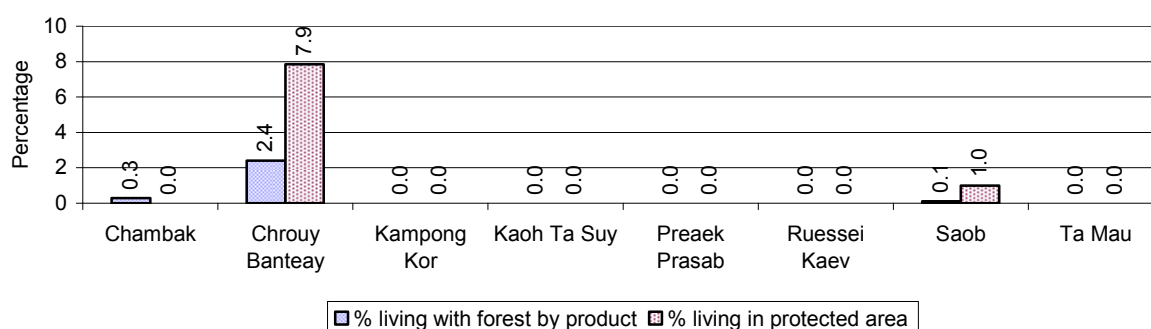
4 Natural Resources and Environment (NRE)

4.1 Families involved with NRE issues over 3 years

Description	2006 %	2007 %	2008	
			%	Number
Families living with forest by products	0 %	0 %	0 %	59 families
Families living in a protected area	1 %	1 %	1 %	190 families
Houses with access to garbage collection service	0 %	0 %	0 %	58 families
Families affected by environmental pollution	0 %	0 %	0 %	36 families
Families using chemical fertilizer	36 %	33 %	32 %	4,262 families
Families using chemical pesticide	40 %	36 %	36 %	4,823 families

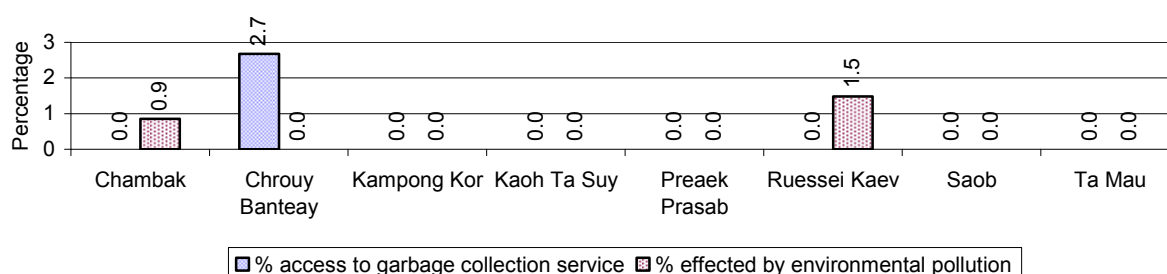
Note: Calculated as a percentage of the total number of families

4.2 Percentage of Families involved with Natural Resource issues, by Commune, for 2008



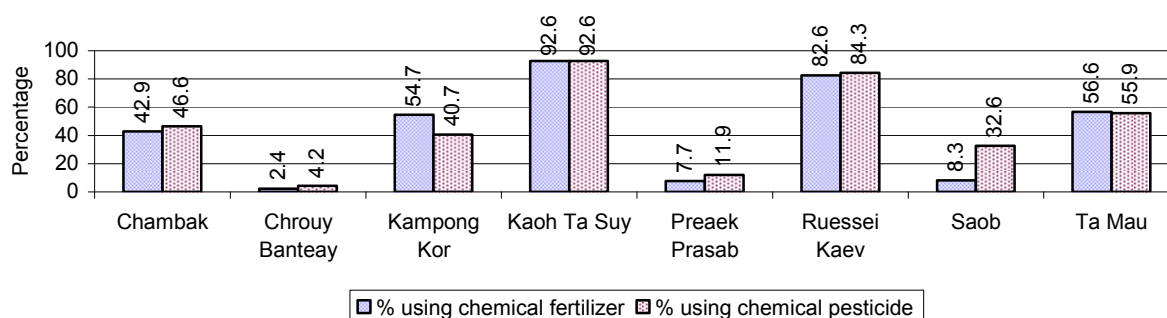
Note: Calculated as a percentage of the number of families in each commune

4.3 Percentage Houses with access to Garbage collection and Families affected by environmental Pollution, by Commune, for 2008



Note: Garbage collection is calculated as a percentage of the total number of houses in each commune and families affected by environmental pollution is calculated as a percentage of the total number of families in each commune.

4.4 Percentage Families using chemical Fertilizer and chemical Pesticides, by Commune, for 2008



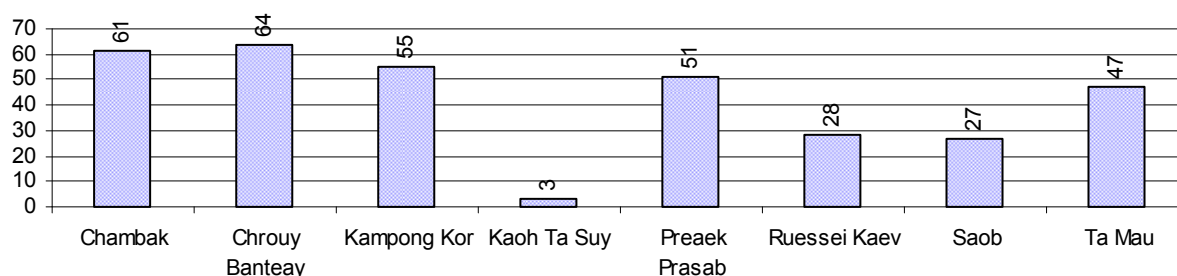
Note: Calculated as a percentage of the total number of families in each commune

5 Administration and Security

5.1 Birth Registration across 3 years

Description	2006	2007	2008
Number of infants to be registered	899 person(s)	914 person(s)	808 person(s)
Number of unregistered infants the year	260 person(s)	413 person(s)	336 person(s)
Percentage of infants unregistered	29 %	45 %	42 %

5.2 Number of unregistered Infants born in 2008, by Commune

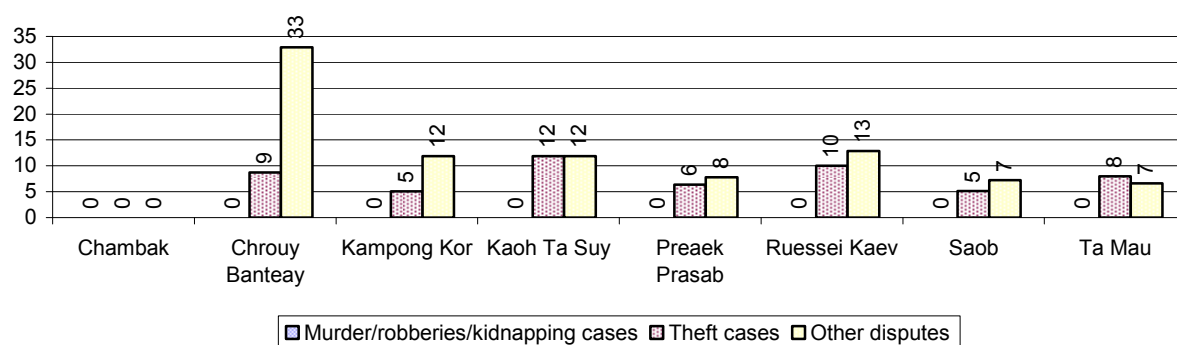


5.3 Registered criminal Cases over 3 years

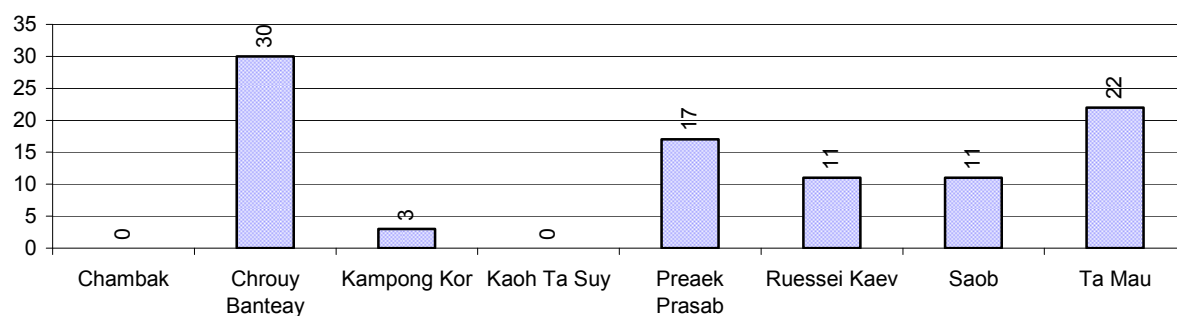
Description	2006	2007	2008
Murders, robberies and kidnapping cases	5 case(s)	2 case(s)	0 case(s)
Theft cases	120 case(s)	62 case(s)	41 case(s)
land dispute cases	71 case(s)	87 case(s)	94 case(s)
Other disputes cases	82 case(s)	74 case(s)	75 case(s)

Note: this reflects only registered criminal cases

5.4 Registered criminal Cases per 10,000 people, by Commune, for 2008



5.5 Number of registered Land Disputes, by Commune, in 2008

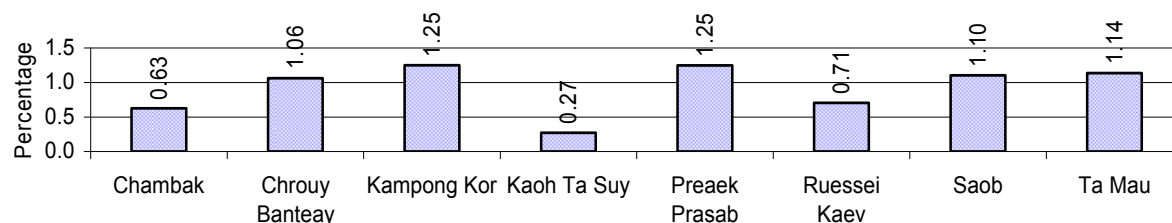


6 Gender

6.1 Registered Domestic Violence over 3 years

Description		2006	2007	2008
Families experiencing domestic violence		186 families	181 families	137 families(s)
% families experiencing domestic violence		1 %	1 %	1 %
Domestic violence cases reported by village chiefs		110 case(s)	79 case(s)	60 case(s)
Type	Physical violence	62 case(s)	50 case(s)	44 case(s)
	Sexual violence	4 case(s)	1 case(s)	0 case(s)
	Mental violence	38 case(s)	26 case(s)	9 case(s)
	Household economic violence	6 case(s)	2 case(s)	7 case(s)
Number of administrative decisions on domestic violence		42 case(s)	59 case(s)	25 case(s)
% of administrative decisions on domestic violence		38 %	75 %	42 %

6.2 Percentage of registered cases of Families experiencing domestic Violence, by Commune, in 2008



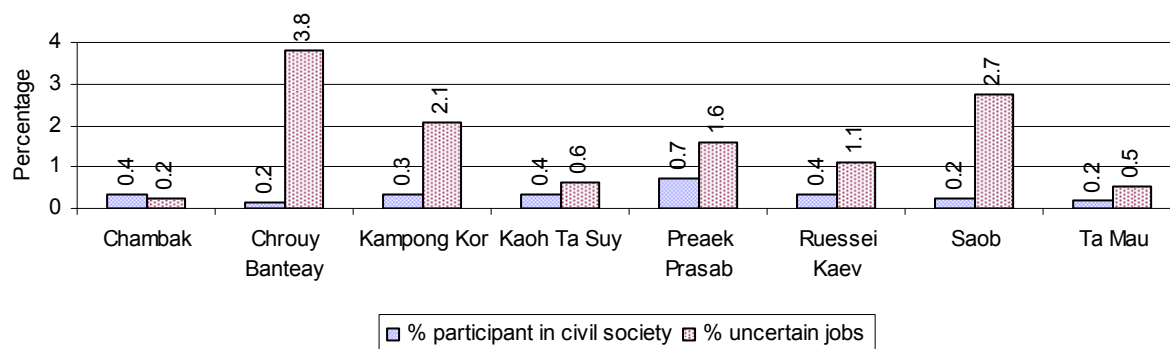
Note: Calculated as a percentage of the total number of families in each commune

6.3 Women's involvement over 3 years

Description	2006 %	2007 %	2008	
			%	Number
People participating in civil society	1%	1%	1%	429 person(s)
Women participating in civil society	0%	0%	0%	235 person(s)
People, 18-60 yrs, with uncertain/irregular jobs	3%	6%	3%	1,053 person(s)
Women, 18-60 yrs, with uncertain/irregular jobs	1%	3%	2%	569 person(s)

Note: Participation can be in NGOs, CBOs, credit groups, women's unions, parties and other civil society organizations. The first section is calculated as a percentage of the total population. The second section is calculated as a percentage of the total 18-60 year old population.

6.4 Percentage of Female Participants in Civil Society and of 18-60 year women with uncertain Jobs, by Commune, in 2008



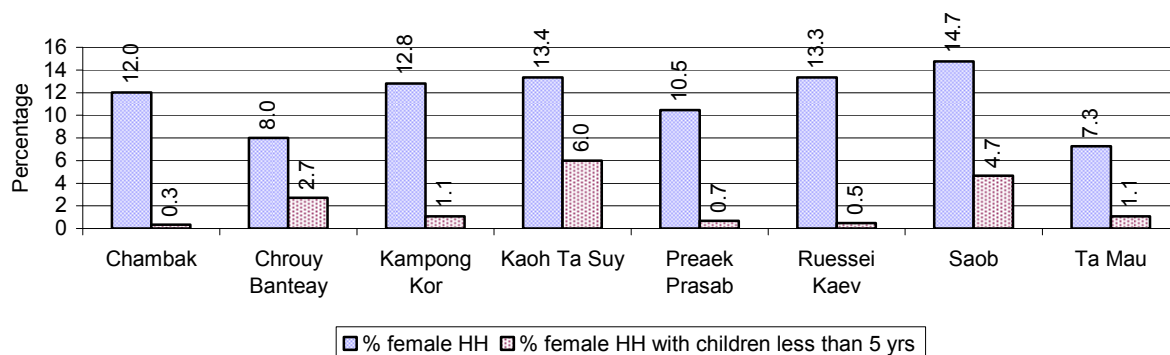
Note: Percentage of female participants in civil society is calculated as a percentage of the total population per commune. The percentage of 18-60 years old women with uncertain jobs is calculated as a percentage of the total 18-60 year old population per commune.

6.5 Female-headed Households over 3 years

Families with:	2006	2007	2008	
	%	%	%	Number
Households in which a woman is the family head	12%	11%	11%	1,496 families
Households in which a woman is the family head with children of less than 5 yrs	2%	2%	2%	237 families

Note: Calculated as a percentage of the total number of families

6.6 Percentage female-headed Households and with Children of less than 5 years old, by Commune, in 2008



Note: Calculated as a percentage of the total number of families in each commune
HH: Headed Household

7 Indigenous People in the District

7.1 Ethnic Minorities in the District over 3 years

Race of indigenous	2006		2007		2008	
	# families	# population	# families	# population	# families	# population
Phnong	0 families	0 person(s)	0 families	0 person(s)	0 families	0 person(s)
Kouy	0 families	0 person(s)	0 families	0 person(s)	0 families	0 person(s)
Stieng	0 families	0 person(s)	0 families	0 person(s)	0 families	0 person(s)
Mil	0 families	0 person(s)	0 families	0 person(s)	0 families	0 person(s)
Kroal	0 families	0 person(s)	0 families	0 person(s)	0 families	0 person(s)
Thmorn	0 families	0 person(s)	0 families	0 person(s)	0 families	0 person(s)
Khaonh	0 families	0 person(s)	0 families	0 person(s)	0 families	0 person(s)
Tompouonn	0 families	0 person(s)	0 families	0 person(s)	0 families	0 person(s)
Charay	0 families	0 person(s)	0 families	0 person(s)	0 families	0 person(s)
Kroeung	0 families	0 person(s)	0 families	0 person(s)	0 families	0 person(s)
Kavet	0 families	0 person(s)	0 families	0 person(s)	0 families	0 person(s)
Saouch	0 families	0 person(s)	0 families	0 person(s)	0 families	0 person(s)
Lun	0 families	0 person(s)	0 families	0 person(s)	0 families	0 person(s)
Kachak	0 families	0 person(s)	0 families	0 person(s)	0 families	0 person(s)
Praov	0 families	0 person(s)	0 families	0 person(s)	0 families	0 person(s)
Others	0 families	0 person(s)	0 families	0 person(s)	0 families	0 person(s)
Total	0 families	0 person(s)	0 families	0 person(s)	0 families	0 person(s)

Note: "Others" refer to other ethnic groups which are not listed.

7.2 Other Minorities in the District over 3 years

Minority	2006		2007		2008	
	# families	# population	# families	# population	# families	# population
Khmer Islamic	1 families	3 person(s)	1 families	3 person(s)	2 families	10 person(s)
Vietnamese	21 families	87 person(s)	17 families	114 person(s)	15 families	114 person(s)
Laos	0 families	0 person(s)	1 families	2 person(s)	1 families	1 person(s)

Note: Number of indigenous and minority population are additional data, so some village may not recorded.

SECTION C: PLANS AND PROJECTS

8 Priorities and Plans

8.1 Priorities of Commune Councils for 2009 in the District by Sector

The District Priority Activity Matrix (DPAM) data are taken from the CDPD. The DPAM is used for the District Integration Workshop (DIW), to show what kind of projects the commune has proposed in their Commune Investment Plan (CIP) for 2009. Donors, departments and other agencies then consider which projects they want to support and which projects they are not interested in. This results in Temporary Agreements between the Commune Council and the Supporter (NGO, Department, private donor, etc), as shown in table 8.2

No.	Project Name	Chambak	Chrouy Banteay	Kampong Kor	Kaoh Ta Suy	Preaek Prasab	Ruessei Kaev	Saob	Ta Mau	Req.Project
		100301	100302	100303	100304	100305	100306	100307	100308	Total
Economic										
1	Compost fertilizer training	10 training	1 training		3 training		4 training			4
2	Chemical and pesticide application training			4 training	3 training	10 training	4 training	1 training	14 training	6
3	Mixed farming system training						4 training		1 training	2
4	Soil improvement techniques training	6 training								1
5	Subsidiary cropping technique training				3 training					1
6	Upland cropping training		1 training							1
7	Rice cultivation technique training	12 training	1 training						14 training	3
8	Animal vaccination request	12 time	1 training	8 time	9 time		8 time	14 time	2 time	8
9	Village veterinary training	12 training					1 training			2
10	Animal raising training	18 training			3 training	10 training	8 training		2 training	5
11	Pig raising training								2 training	1
12	Rice seed request	13 T		3 T			4 T		2 T	4
13	Calf for raising request			23 Head						1
14	Sow for raising request			45 Head	30 Head					2
15	Chicken request				150 Head					1
16	Fuel request								2450 Liter	1

District Data Book 2009: Development Plans and Projects

No.	Project Name	Chambak	Chrouy Banteay	Kampong Kor	Kaoh Ta Suy	Preaek Prasab	Ruessei Kaev	Saob	Ta Mau	Req.Project
		100301	100302	100303	100304	100305	100306	100307	100308	Total
17	Goat raising request				3 place					1
18	Family fish pond construction	12 Pond		22 Pond	60 Pond				70 Pond	4
19	Fish raising training								2 training	1
20	Fish fingerling request	7500 Head								1
21	Laterite/natural gravel road construction					2800 m			9350 m	2
22	Culvert construction			3 place		53 place				2
23	Bridger construction	2 place	2 place					1 place		3
24	Earth road repairing				2600 m					1
25	Laterite/natural gravel road repairing	21027 m	5450 m	11700 m		12600 m	7808 m	5000 m		6
26	Water pump			2400 m						1
27	Canal construction		240 m				350 m		400 m	3
28	Dam construction							2 place		1
29	Water gate construction					4 place		1 place		2
30	Spillway construction								1 place	1
31	Canal repairing					5 place	2 place	8 place		3
32	Dam repairing	4 place		4 place		3 place	3 place	2 place	4 place	8
33	Irrigation pond repairing						3 place			1
34	Rice seed bank							60 family		1
35	Cow bank								30 Head	1
36	Pig bank						80 family		26 Head	2
37	Livestock bank			29 Head						1
38	Market place creation/construction					1 place				1
39	Development of natural tourism area		1 place							1
40	Water pump			8 set						1
Social										
1	Reproductive health awareness education	1 training	7 time	1 training	6 time	10 time	8 time	8 time	7 time	9
2	HIV/AIDS awareness education	18 time		12 time						2
3	Health/hygiene education for local people	3 training		16 time	3 time	50 time	8 time	1 time		7

District Data Book 2009: Development Plans and Projects

No.	Project Name	Chambak	Chrouy Banteay	Kampong Kor	Kaoh Ta Suy	Preaek Prasab	Ruessei Kaev	Saob	Ta Mau	Req.Project
		100301	100302	100303	100304	100305	100306	100307	100308	Total
4	Mouth and teeth health care education	4 time								1
5	Leaflets and posters distribution	6 piece	2 time							3
6	Children immunization provision	12 time			5 time				2 time	3
7	TBA training				3 training		1 training			2
8	TB/leprosy patients searching	2 time								1
9	Mosquito nets distribution/treatment	341 mosqui-net	2500 mosqui-net			6873 mosqui-net		1965 mosqui-net	245 mosqui-net	6
10	Mosquito larvae removal treatment		2012 family							1
11	Dengue fever education programme	4 time								1
12	Patients transport mean improvement	52 time								1
13	Establish & support children health care center	18 training								1
14	Latrine construction	124 toilet		589 toilet	120 toilet		450 toilet	700 toilet	60 toilet	6
15	Latrine construction at school						1 building			1
16	Sanitation education		1 time							1
17	Commune health center construction						1 place			1
18	Village health post construction			1 building		2 building				2
19	Maternity building construction	1 building								1
20	Water filter equipment supply	358 Container								1
21	Water supply				1 place					1
22	Ring wells construction	5 well				61 well	20 well	10 well	15 well	5
23	School building/furniture							3 building		1
24	Junior high school construction							1 building		1
25	Senior high school construction					2 building				1

District Data Book 2009: Development Plans and Projects

No.	Project Name	Chambak	Chrouy Banteay	Kampong Kor	Kaoh Ta Suy	Preaek Prasab	Ruessei Kaev	Saob	Ta Mau	Req.Project
		100301	100302	100303	100304	100305	100306	100307	100308	Total
26	School building	3 building		4 building					4 building	4
27	Primary school creation/construction		4 building			5 building				2
28	Kindergarten school construction/repair		1 building			4 building				2
29	Motivating pupil's parents for school enrollment		1 time				8 time			2
30	Skill training for disabled person	1 training								1
31	Emergency relief		196 family			700 package				2
32	Flood refuge mound/temporary shelter provision	1 place	7 place	8 place				3 place		4
33	Boat provision to poor family		7 set							1
NREM										
1	Environmental awareness and law education	3 time	7 time			10 time		1 time		4
2	Fishery law education	12 training	1 place	8 time	3 time	10 time	4 time	1 time	4 time	9
3	Forestry law education	18 time					4 time	1 time		3
4	Education on importance of the forests	12 time								1
5	Wildlife protection law education	12 time					5 time			2
6	Environmental poster installation						8 piece	1 piece		2
7	Establishment of NREM protection community							1 place		1
8	NREM programme	500 place								1
9	Forestry protection poster setting up		2 piece	4 piece			12 piece			3
10	Tree plantation project	500 Tree		1500 Tree			250 Tree		2000 Tree	4
11	Establishment of tree nursery	1 place		1 place					2 place	3
12	Flooded forest rehabilitation/planting	26 place			1500 Tree					2
13	Illegal fishing prevention	10 time	1 time	1 time		1 time	4 time	1 piece		6

District Data Book 2009: Development Plans and Projects

No.	Project Name	Chambak	Chrouy Banteay	Kampong Kor	Kaoh Ta Suy	Preaek Prasab	Ruessei Kaev	Saob	Ta Mau	Req.Project
		100301	100302	100303	100304	100305	100306	100307	100308	Total
14	Strengthening fishery community	3 Team			1 time		3 time	1 time	2 time	5
15	Natural water ways/reservoirs rehabilitation/conservation		6 place	1 place		4 place			56 place	4
16	Fish habitat/fish species protection/conservation						1 place			1
17	Flooded forest clearance prevention	12 time							2 training	2
18	Community forestry activities support	1 Forestry Community	1 Forestry Community	1 Fishing Community			1 Forestry Community	1 Fishing Community		5
19	Wildlife protection enforcement		1 Fishing Community							1
20	Sewage culvert system construction/rehabilitation	200 m								1
21	Household waste management education	3 training								1
22	Drainage canal construction/rehabilitation			1000 m						1
23	Sanitation awareness poster installation	6 piece								1
Administration and Security										
1	CC capacity strengthening				1 time					1
2	Good governance training	2 training								1
3	Commune sub-committee support						2 time			1
4	Commune office construction/renovation	1 building			1 building	1 building	1 building			4
5	Equipment/material for village chief							193 family		1
6	Land law dissemination	18 time	1 time	4 time	3 training	10 time		1 time	7 time	7
7	Provision of land titles/certificates	1751 family	2021 family		72 family		1353 family	1551 family		5
8	Land use planning								700 family	1

District Data Book 2009: Development Plans and Projects

No.	Project Name	Chambak	Chrouy Banteay	Kampong Kor	Kaoh Ta Suy	Preaek Prasab	Ruessei Kaev	Saob	Ta Mau	Req.Project
		100301	100302	100303	100304	100305	100306	100307	100308	Total
9	New village creation/dwelling establishment	464 family	230 family	635 family		1220 family		125 family		5
10	Village/commune border identification			2 place	2 place	2 place		7 piece		6
11	People guard activities formation/strengthening					6 Team				1
12	Local security strengthening						2 time			1
13	Local security regulation/order dissemination					10 training				1
14	Flood rescue capacity building/strengthening			4 set		62 set	8 time	6 set		4
15	Traffic accident prevention		7 time							1
16	Law/regulation dissemination		1 time	12 time						2
17	Information board provision/creation/built			5 piece		11 piece				2
18	Human right and related law education	3 time		4 time	3 time		4 time			4
19	Penal and civil law dissemination	2 training			3 time		8 time	1 time	4 training	5
20	Traffic law and public order dissemination		1 time					1 time		2
21	Water pump group establishment	6 set			3 set				5 set	3
22	Market/local craft community formation						1 place			1
Gender										
1	Gender mainstreaming concept training	12 training	7 training							2
2	Gender mainstreaming among local people				3 time					1
3	Women leadership strengthening/capacity building	1 time								1
4	Woman and children's rights dissemination	3 training		4 training						2
5	Women and men roles/rights								4	1

District Data Book 2009: Development Plans and Projects

No.	Project Name	Chambak	Chrouy Banteay	Kampong Kor	Kaoh Ta Suy	Preaek Prasab	Ruessei Kaev	Saob	Ta Mau	Req.Project
		100301	100302	100303	100304	100305	100306	100307	100308	Total
	dissemination								training	
6	Women vocational training	1 training	1 training		1 training			1 training	1 training	5
7	Tailor skill training			1 training		1 training	1 training			3
8	Food cooking/processing skill training		1 training		1 training	1 training		1 training		4
9	Materials support to create women job		175 family							1
10	Law against domestic violence dissemination	12 time		12 time	6 time	10 time	4 time	7 time	7 time	7
11	Trafficking of women/children control activity strengthening						1 training		7 training	2
12	Trafficking information disseminations	3 training								1

Source: CDPD – District Priority Matrix

8.2 Temporary Agreements by Commune, for 2009²

At the District Integration Workshop (DIW) the Supporters (donors, agencies, private donors, NGOs, etc.) identify which projects/activities they would like to support or they put forward their own projects to be implemented in a particular commune. Once there is agreement between Commune Councils and Supporters on specific projects a **Temporary Agreement** is signed by the commune and the Supporter to show their mutual commitment to the identified projects/activities.

It is important to keep in mind that such Temporary Agreements do not necessarily result in implementation.

8.2.1 Temporary Agreements for 2009 as per DIW 2008 for Commune: Chambak

Commune GIS	Commune	Temporary Agreements				Supporter	Funding Source	Listed in CIP befor DIW
		Project Name	Quantity	Unit	Est.Cost (K.Riels)			
Economic								
100301	Chambak	Agricultural product processing, job and business	1	Team	0	Cambodia Community Development Organization		<input type="checkbox"/>
Social								
100301	Chambak	Malaria awareness dissemination to community through village events	0		600	Partners for Development		<input type="checkbox"/>
100301	Chambak	Malaria awareness education at schools	0		0	Partners for Development		<input type="checkbox"/>
100301	Chambak	TOT refresher training	6	person	705	Partners for Development		<input type="checkbox"/>
100301	Chambak	After training session impact monitoring	6	person	64	Partners for Development		<input type="checkbox"/>
100301	Chambak	Maternity building construction	1	building	80000	Department of Health		✓
NREM								
100301	Chambak	Strengthening fishery community	1	Fishing Community	0	Cambodia Community Development Organization		✓
100301	Chambak	Flooded forest clearance prevention	3	time	1200	Department of Environment		✓
Gender								
100301	Chambak	Gender mainstreaming concept training	2	person	140	Department of Women		✓
100301	Chambak	Woman and children's rights dissemination	1	training	0	Department of Social and Veteran Affairs and Youth Rehabilitation		✓
100301	Chambak	Gender mainstreaming concept training	2	person	140	Department of Women		✓

² Not all the data from the CDPD has been translated to English, this has resulted in some cells in the TA tables being blank.

8.2.2 Temporary Agreements for 2009 as per DIW 2008 for Commune: Chrouy Banteay

Commune GIS	Commune	Temporary Agreements				Supporter	Funding Source	Listed in CIP before DIW
		Project Name	Quantity	Unit	Est.Cost (K.Riels)			
Economic								
100302	Chrouy Banteay	Food security project	0		0	Khmer Association for Development of Cambodia		<input type="checkbox"/>
100302	Chrouy Banteay	Laterite road repairing	11	km	30800	Department of Rural Development		<input type="checkbox"/>
100302	Chrouy Banteay	Boeung Khnay Romeas's dam repairing	1	place	1600000	Department of Water Resources and Meteorology		<input type="checkbox"/>
100302	Chrouy Banteay	Chhroy Bantey tourist attraction potential study	3	training	640	Department of Tourism		<input type="checkbox"/>
Social								
100302	Chrouy Banteay	Malaria awareness education for school children	0		640	Partners for Development		<input type="checkbox"/>
100302	Chrouy Banteay	Community strengthening to respond to disaster project	0		62936	Khmer Association for Development of Cambodia		<input type="checkbox"/>
100302	Chrouy Banteay	Malarial training impact monitoring	6	person	372	Partners for Development		<input type="checkbox"/>
100302	Chrouy Banteay	Malaria training to master trainers	6		705	Partners for Development		<input type="checkbox"/>
100302	Chrouy Banteay	Malaria awareness education at school	0		0	Partners for Development		<input type="checkbox"/>
Administration and Security								
100302	Chrouy Banteay	Good governance strengthening project	0		0	Khmer Association for Development of Cambodia		<input type="checkbox"/>
100302	Chrouy Banteay	Khmer rouge trial dissemination	0		0	Association for Development and Human Rights of Cambodia		<input type="checkbox"/>
100302	Chrouy Banteay	New village creation/dwelling establishment	0	family	6000	Department of Land Management, Urban Planning & Construction		✓
100302	Chrouy Banteay	Community representative training on human rights and laws enforcement	0		0	Association for Development and Human Rights of Cambodia		<input type="checkbox"/>
Gender								

Commune GIS	Commune	Temporary Agreements				Supporter	Funding Source	Listed in CIP before DIW
		Project Name	Quantity	Unit	Est.Cost (K.Riels)			
100302	Chrouy Banteay	Women and children right project	0		0	Khmer Association for Development of Cambodia		<input type="checkbox"/>
100302	Chrouy Banteay	Gender mainstreaming concept training	2	person	140	Department of Women		✓
100302	Chrouy Banteay	Gender mainstreaming concept training	2	person	140	Department of Women		✓

8.2.3 Temporary Agreements for 2009 as per DIW 2008 for Commune: Kampong Kor

Commune GIS	Commune	Temporary Agreements				Supporter	Funding Source	Listed in CIP befor DIW
		Project Name	Quantity	Unit	Est.Cost (K.Riels)			
Economic								
100303	Kampong Kor	Food security project	0		0	Cambodia Community Development Organization		<input type="checkbox"/>
100303	Kampong Kor	Laterite road repairing	2500	m	70000	Department of Rural Development		✓
Administration and Security								
100303	Kampong Kor	Community strengthening to respond to disaster project	0		62936	Cambodia Community Development Organization		<input type="checkbox"/>
100303	Kampong Kor	Good governance training	0		0	Cambodia Community Development Organization		<input type="checkbox"/>
100303	Kampong Kor	New village creation/dwelling establishment	0	family	6000	Department of Land Management, Urban Planning & Construction		✓
Gender								
100303	Kampong Kor	Local leaders and CWCC focal point meeting on Gender mainstreaming in CIP	2	person	140	Department of Women		<input type="checkbox"/>
100303	Kampong Kor	Brainstorming forum with commune leaders and gender focal point on local gender issues	2	person	140	Department of Women		<input type="checkbox"/>
100303	Kampong Kor	Woman and children's rights dissemination	0	training	0	Cambodia Community Development Organization		✓

Commune GIS	Commune	Temporary Agreements				Supporter	Funding Source	Listed in CIP before DIW
		Project Name	Quantity	Unit	Est.Cost (K.Riels)			
100303	Kampong Kor	Woman and children's rights dissemination	0	training	0	Department of Social and Veteran Affairs and Youth Rehabilitation		✓

8.2.4 Temporary Agreements for 2009 as per DIW 2008 for Commune: Kaoh Ta Suy

Commune GIS	Commune	Temporary Agreements				Supporter	Funding Source	Listed in CIP befor DIW
		Project Name	Quantity	Unit	Est.Cost (K.Riels)			
Social								
100304	Kaoh Ta Suy	HIV/AIDS education and HIV positive people health care	0		16000	Khmer Women Welfare Association		<input type="checkbox"/>
100304	Kaoh Ta Suy	Malaria awareness education at school	0		0	Partners for Development		<input type="checkbox"/>
100304	Kaoh Ta Suy	Malaria awareness trainer strengthening	6	person	705	Partners for Development		<input type="checkbox"/>
100304	Kaoh Ta Suy	Trained school teachers and pupils monitoring	6	person	372	Partners for Development		<input type="checkbox"/>
Gender								
100304	Kaoh Ta Suy	Gender mainstreaming among local people	2	person	140	Department of Women		✓
100304	Kaoh Ta Suy	Gender mainstreaming among local people	2	person	140	Department of Women		✓

8.2.5 Temporary Agreements for 2009 as per DIW 2008 for Commune: Preaek Prasab

Commune GIS	Commune	Temporary Agreements				Supporter	Funding Source	Listed in CIP before DIW
		Project Name	Quantity	Unit	Est.Cost (K.Riels)			
Economic								
100305	Preaek Prasab	Multi-job creation	1	Team	0	Cambodia Community Development Organization		<input type="checkbox"/>
100305	Preaek Prasab	Water user community formation	1	Team	20000	Department of Water Resources and Meteorology		<input type="checkbox"/>
100305	Preaek Prasab	Dam repairing	1	place	60800	Department of Water Resources and Meteorology		✓
100305	Preaek Prasab	Laterite road repairing	5730	m	160000	Department of Rural Development		✓
Social								
100305	Preaek Prasab	Malaria combat planning formulation	4	training	1600	Partners for Development		<input type="checkbox"/>
100305	Preaek Prasab	Malaria awareness education at school	0		0	Partners for Development		<input type="checkbox"/>
100305	Preaek Prasab	Malaria awareness trainer strengthening	6	person	705	Partners for Development		<input type="checkbox"/>
100305	Preaek Prasab	Malarial training impact monitoring	6	person	372	Partners for Development		<input type="checkbox"/>
100305	Preaek Prasab	Disaster respond preparedness	0		0	Khmer Women Welfare Association		<input type="checkbox"/>
100305	Preaek Prasab	Small health fund support for health center committee	4	Team	3200	Partners for Development		<input type="checkbox"/>
NREM								
100305	Preaek Prasab	Illegal fishing prevention	1	Fishing Community	0	Cambodia Community Development Organization		✓
Administration and Security								
100305	Preaek Prasab	New village creation/dwelling establishment	1	training	6000	Department of Land Management, Urban Planning & Construction		✓
Gender								
100305	Preaek	Brainstorming forum with local	2	person	140	Department of Women		<input type="checkbox"/>

Commune GIS	Commune	Temporary Agreements				Supporter	Funding Source	Listed in CIP before DIW
		Project Name	Quantity	Unit	Est.Cost (K.Riels)			
	Prasab	leaders and focal point on local gender issues						
100305	Preaek Prasab	Local leaders and CWCC focal point meeting on Gender mainstreaming in CIP	2	person	140	Department of Women		<input type="checkbox"/>

8.2.6 Temporary Agreements for 2009 as per DIW 2008 for Commune: Ruessei Kaev

Commune GIS	Commune	Temporary Agreements				Supporter	Funding Source	Listed in CIP before DIW
		Project Name	Quantity	Unit	Est.Cost (K.Riels)			
Economic								
100306	Ruessei Kaev	Multi-business creation	0		0	Partners for Development		<input type="checkbox"/>
100306	Ruessei Kaev	Multi-business creation	1	Team	1	Khmer Association for Development of Cambodia		<input type="checkbox"/>
Social								
100306	Ruessei Kaev	Malaria awareness education at school	0		0	Partners for Development		<input type="checkbox"/>
100306	Ruessei Kaev	Malaria awareness trainer strengthening	6	person	705	Partners for Development		<input type="checkbox"/>
100306	Ruessei Kaev	Malarial training impact monitoring	6	person	372	Partners for Development		<input type="checkbox"/>
100306	Ruessei Kaev	Food security project	1	Team	1	Khmer Association for Development of Cambodia		<input type="checkbox"/>
NREM								
100306	Ruessei Kaev	Community forestry activities support	1	Forestry Community	1	Cambodia Community Development Organization		✓
Administration and Security								
100306	Ruessei Kaev	Governance strengthening project	0		0	Khmer Association for Development of Cambodia		<input type="checkbox"/>
100306	Ruessei Kaev	Social land concession project planning training	0		6000	Department of Land Management, Urban Planning & Construction		<input type="checkbox"/>

Commune GIS	Commune	Temporary Agreements				Supporter	Funding Source	Listed in CIP before DIW
		Project Name	Quantity	Unit	Est.Cost (K.Riels)			
100306	Ruessei Kaev	Land use planning formulation	1	place	12000	Department of Land Management, Urban Planning & Construction		<input type="checkbox"/>
Gender								
100306	Ruessei Kaev	Women and children right project	0		0	Khmer Association for Development of Cambodia		<input type="checkbox"/>
100306	Ruessei Kaev	Brainstorming forum with local leaders and gender focal point on local gender issues	2	person	140	Department of Women		<input type="checkbox"/>
100306	Ruessei Kaev	Local leaders and CWCC focal point meeting on Gender mainstreaming in CIP	2	person	140	Department of Women		<input type="checkbox"/>

8.2.7 Temporary Agreements for 2009 as per DIW 2008 for Commune: Saob

Commune GIS	Commune	Temporary Agreements				Supporter	Funding Source	Listed in CIP befor DIW
		Project Name	Quantity	Unit	Est.Cost (K.Riels)			
Economic								
100307	Saob	Rural livelihood improvement project	0		43000	Khmer Association for Development of Cambodia		<input type="checkbox"/>
100307	Saob	Laterite road repairing	11	km	308000	Department of Rural Development		✓
Social								
100307	Saob	Malaria awareness education at schools	0		0	Khmer Association for Development of Cambodia		<input type="checkbox"/>
100307	Saob	Malaria awareness trainer strengthening	6	person	705	Khmer Association for Development of Cambodia		<input type="checkbox"/>
100307	Saob	Training results monitoring	6	person	372	Partners for Development		<input type="checkbox"/>
Administration and Security								
100307	Saob	Land use planning formulation	0		12000	Department of Land Management, Urban Planning & Construction		<input type="checkbox"/>
100307	Saob	Community representative training on	0		0	Association for Development		<input type="checkbox"/>

Commune GIS	Commune	Temporary Agreements				Supporter	Funding Source	Listed in CIP before DIW
		Project Name	Quantity	Unit	Est.Cost (K.Riels)			
		human rights and laws enforcement				and Human Rights of Cambodia		
100307	Saob	New village creation/dwelling establishment	0	family	6000	Department of Land Management, Urban Planning & Construction		✓
Gender								
100307	Saob	Brainstorming forum with commune leaders and gender focal point on local gender mainstreaming	2	person	140	Department of Women		<input type="checkbox"/>
100307	Saob	Local leaders and CWCC focal point meeting on Gender mainstreaming in CIP	2	person	140	Department of Women		<input type="checkbox"/>

8.2.8 Temporary Agreements for 2009 as per DIW 2008 for Commune: Ta Mau

Commune GIS	Commune	Temporary Agreements				Supporter	Funding Source	Listed in CIP befor DIW
		Project Name	Quantity	Unit	Est.Cost (K.Riels)			
Economic								
100308	Ta Mau	Pig raising training	2	training	720	Oxfam Community Aid Abroad		✓
100308	Ta Mau	Fish raising training	2	training	1200	Oxfam Great Britian		✓
100308	Ta Mau	Chemical and pesticide application training	6	training	50000	Oxfam Great Britian		✓
100308	Ta Mau	Rice cultivation technique training	6	training	3000	Oxfam Great Britian		✓
100308	Ta Mau	Rice seed request	1	T	1800	Oxfam Great Britian		✓
100308	Ta Mau	Pig bank	12	Head	3000	Oxfam Great Britian		✓
100308	Ta Mau	Weir construction	35	m	20000	Oxfam Great Britian		✓
100308	Ta Mau	Laterite road construction	3220	m	90160	Department of Rural Development		✓
100308	Ta Mau	Animal raising training	2	time	720	Oxfam Community Aid Abroad		✓
100308	Ta Mau	Mushroom growing training	1	training	1120	Department of Labor and Vocational Training		☐
100308	Ta Mau	Multi-business creation	0		0	Partners for Development		☐
100308	Ta Mau	Long pipe water pump	3	set	7500	Oxfam Great Britian		☐

District Data Book 2009: Development Plans and Projects

Commune GIS	Commune	Temporary Agreements				Supporter	Funding Source	Listed in CIP befor DIW
		Project Name	Quantity	Unit	Est.Cost (K.Riels)			
100308	Ta Mau	Pond construction	70	Pond	350000	Oxfam Great Britian		<input type="checkbox"/>
100308	Ta Mau	S.R.I rice field	3	village	750	Oxfam Great Britian		<input type="checkbox"/>
100308	Ta Mau	Animal vaccination request	2	time	720	Oxfam Great Britian		<input checked="" type="checkbox"/>
Social								
100308	Ta Mau	Ring wells construction	6	well	36000	Oxfam Great Britian		<input checked="" type="checkbox"/>
100308	Ta Mau	Monitoring activities after Malaria training classes	6	training	372	Partners for Development		<input type="checkbox"/>
100308	Ta Mau	Malaria awareness trainer strengthening	6	training	705	Partners for Development		<input type="checkbox"/>
100308	Ta Mau	Malaria awareness education at school for teachers and pupils	0		0	Partners for Development		<input type="checkbox"/>
NREM								
100308	Ta Mau	NRM and environmental of flooded forest	2	time	800	Department of Environment		<input type="checkbox"/>
100308	Ta Mau	Strengthening fishery community	0	time	0	Cambodia Community Development Organization		<input checked="" type="checkbox"/>
Gender								
100308	Ta Mau	Women and men roles/rights dissemination	2	person	140	Department of Women		<input checked="" type="checkbox"/>
100308	Ta Mau	Women and men roles/rights dissemination	2	person	140	Department of Women		<input checked="" type="checkbox"/>

Source: CDPD, District Level Detail TA resulting from DIW

8.3 Outputs, estimated and actual costs of C/S Fund Projects between 2005 and 2008, by Commune

Commune	Project Type	Budget Year	Output		Quantity	Unit	Unit Cost MR	
			Description	Type			Estimate	Actual
Chambak	Irrigation	2005	Single pipe Culvert with gate	New	2	Place	10.30	24.00
Chambak	Irrigation	2005	Earth dam	New	0.21	Km	18.03	24.00
Chambak	Rural Transport	2006	Laterite road	Repair	3.25	Km	33.30	31.96
Chambak	Rural Transport	2007	Single pipe culvert	New	2	Place	3.55	19.95
Chambak	Rural Transport	2007	Earth road	Repair	2.8	Km	55.49	19.95
Chambak	Rural Transport	2008	Single pipe culvert	New	2	Place	11.86	5.88
Chambak	Irrigation	2008	Canal	Repair	5.312	Km	81.78	40.89
Chrouy Banteay	Rural Transport	2005	Pipe culvert (general)	New	1	Place	1.32	17.99
Chrouy Banteay	Rural Domestic Water Supplies	2005	Drilled well with Afridev pump	New	3	Place	14.99	12.59
Chrouy Banteay	Rural Transport	2005	Laterite road	Repair	0.55	Km	16.73	17.99
Chrouy Banteay	Rural Transport	2006	Double pipe culvert	New	1	Place	6.42	25.25
Chrouy Banteay	Rural Transport	2006	Laterite road	Repair	1.08	Km	22.66	25.25
Chrouy Banteay	Rural Transport	2006	Single pipe culvert	New	2	Place	3.71	25.25
Chrouy Banteay	Rural Transport	2007	Single pipe culvert	New	1	Place	1.54	41.44
Chrouy Banteay	Rural Transport	2007	Laterite road	Repair	1.3	Km	42.31	41.44
Chrouy Banteay	Rural Transport	2008	Double pipe culvert	New	1	Place	4.20	45.92
Chrouy Banteay	Rural Transport	2008	Single pipe culvert	New	1	Place	8.33	45.92
Chrouy Banteay	Rural Transport	2008	Laterite road	Repair	1	Km	29.39	45.92
Kampong Kor	Irrigation	2005	Canal	Repair	0.7	Km	25.86	25.34
Kampong Kor	Rural Transport	2006	Laterite road	Repair	1.6	Km	29.32	22.15
Kampong Kor	Rural Transport	2007	Laterite road	Repair	1.39	Km	35.24	26.41
Kaoh Ta Suy	Rural Transport	2005	Earth road	Repair	1.83	Km	20.52	18.93
Kaoh Ta Suy	Rural Transport	2006	Earth road	Repair	2	Km	23.68	23.13
Kaoh Ta Suy	Rural Transport	2007	Single pipe culvert	New	2	Place	3.69	19.50
Kaoh Ta Suy	Rural Transport	2007	Earth road	Repair	3.5	Km	51.42	19.50
Kaoh Ta Suy	Rural Transport	2008	Earth road	Repair	1.27	Km	39.29	30.17
Kaoh Ta Suy	Rural Transport	2008	Double pipe culvert	New	2	Place	16.92	30.17
Preaek Prasab	Irrigation	2005	Earth dam	Repair	0.7	Km	7.99	33.05
Preaek Prasab	Irrigation	2005	Canal	Repair	1.059	Km	25.74	33.05
Preaek Prasab	Rural Transport	2006	Laterite road	Repair	1.305	Km	18.99	28.54
Preaek Prasab	Rural Transport	2006	Drift	New	1	Place	19.90	28.54
Preaek Prasab	Rural Transport	2006	Laterite road	Repair	0.65	Km	10.98	13.25
Preaek Prasab	Rural Transport	2006	Pipe culvert (general)	Repair	2	Place	3.41	13.25

District Data Book 2009: Development Plans and Projects

Commune	Project Type	Budget Year	Output		Quantity	Unit	Unit Cost MR	
			Description	Type			Estimate	Actual
Preaek Prasab	Irrigation	2007	Canal	New	0.478	Km	48.39	45.96
Preaek Prasab	Rural Transport	2008	Double pipe culvert	New	1	Place	3.30	43.01
Preaek Prasab	Rural Transport	2008	Earth road	Repair	2.272	Km	39.72	43.01
Ruessei Kaev	Irrigation	2005	Small water gate	New	1	Place	2.29	20.20
Ruessei Kaev	Rural Domestic Water Supplies	2005	Ring well	New	4	Place	8.44	8.29
Ruessei Kaev	Irrigation	2005	Earth dam	Repair	0.5	Km	18.09	20.20
Ruessei Kaev	Rural Domestic Water Supplies	2006	Ring well	New	6	Place	17.09	16.49
Ruessei Kaev	Rural Transport	2006	Earth road	Repair	0.18	Km	4.83	14.06
Ruessei Kaev	Rural Transport	2006	Laterite road	Repair	0.4	Km	9.70	14.06
Ruessei Kaev	Rural Transport	2007	Laterite road	Repair	1.24	Km	38.64	28.00
Ruessei Kaev	Rural Transport	2008	Laterite road	Repair	1.09	Km	34.96	45.91
Saob	Rural Domestic Water Supplies	2005	Ring well	New	9	Place	17.73	16.59
Saob	Irrigation	2005	Earth dam	Repair	0.21	Km	9.41	11.57
Saob	Irrigation	2005	Small water gate	New	1	Place	2.98	11.57
Saob	Irrigation	2006	Earth dam	Repair	0.33	Km	13.81	10.23
Saob	Rural Transport	2006	Single pipe culvert	New	1	Place	2.40	10.35
Saob	Rural Transport	2006	Double pipe culvert	New	2	Place	8.08	10.35
Saob	Rural Transport	2006	Laterite road	Repair	1	Km	21.23	15.65
Saob	Rural Domestic Water Supplies	2007	Ring well	New	3	Place	7.54	6.71
Saob	Rural Transport	2007	Laterite road	Repair	1.345	Km	29.33	21.31
Saob	Rural Transport	2007	Laterite road	Repair	1.345	Km	29.33	28.11
Saob	Rural Transport	2008	Laterite road	Repair	1.1	Km	26.80	24.20
Ta Mau	Irrigation	2005	Earth dam	Repair	1.075	Km	28.86	28.27
Ta Mau	Irrigation	2006	Earth dam	Repair	4.00E-02	Km	1.06	4.40
Ta Mau	Irrigation	2006	Canal	New	0.4	Km	5.28	4.40
Ta Mau	Rural Transport	2006	Laterite road	Repair	1.4	Km	21.96	17.15
Ta Mau	Irrigation	2007	Canal	New	0.55	Km	35.06	33.48
Ta Mau	Irrigation	2008	Earth dam	Repair	0.264	Km	13.89	32.21
Ta Mau	Irrigation	2008	Canal	New	0.76	Km	40.99	32.21

Source: PID

8.4 Total Expenditure on C/S Fund Projects by sector and commune between 2005 and 2008

Sector	Total Cost in Million Riels							
	Chambak	Chrouy Banteay	Kampong Kor	Kaoh Ta Suy	Preaek Prasab	Ruessei Kaev	Saob	Ta Mau
Irrigation	64.89		25.34		79.01	20.20	21.80	98.36
Rural Domestic Water Supplies		12.59				24.78	23.30	
Rural Transport	25.83	130.60	48.56	91.72	84.80	87.97	78.31	17.15

*Source: PID***8.5 Actual 2009 C/S Fund projects by Commune**

Commune	Project Type	Project Output		Quantity	Unit	Fund Source (Riels)		
		Description	Type			Total	C/S	Local Contribution
Chambak	Rural Transport	Natural Gravel road	Repair	1.152	km	47,688,780	47,188,780	500,000
Chambak	Rural Transport	Natural Gravel road	Repair	0.856	km	47,688,780	47,188,780	500,000
Chambak	Rural Transport	Natural Gravel road	Repair	0.682	km	47,688,780	47,188,780	500,000
Chambak	Rural Transport	Natural Gravel road	Repair	0.648	km	47,688,780	47,188,780	500,000
Chrouy Banteay	Rural Transport	Natural Gravel road	Repair	1.93	km	45,031,342	44,531,342	500,000
Chrouy Banteay	Rural Transport	Single pipe culvert 0.6m diameter	New	1	Place	45,031,342	44,531,342	500,000
Kampong Kor	Irrigation	Unlined Earth canal	Repair	0.773	km	48,956,978	48,656,978	300,000
Kampong Kor	Irrigation	Single pipe culvert 1.0m diameter with stop logs	New	1	Place	48,956,978	48,656,978	300,000
Kaoh Ta Suy	Rural Transport	Earth road	Repair	0.7	km	24,065,045	23,565,045	500,000
Kaoh Ta Suy	Rural Transport	Single pipe culvert 0.6m diameter	New	2	Place	24,065,045	23,565,045	500,000
Preaek Prasab	Rural Transport	Natural Gravel road	Repair	2.25	km	47,684,940	46,684,940	1,000,000
Ruessei Kaev	Rural Transport	Natural Gravel road	Repair	1.35	km	41,122,020	41,022,020	100,000
Saob	Rural Transport	Natural Gravel road	Repair	1.42	km	45,435,428	44,935,428	500,000
Ta Mau	Rural Transport	Natural Gravel road	Repair	1.8	km	41,900,580	41,400,580	500,000
Ta Mau	Rural Transport	Single pipe culvert 0.6m diameter	New	2	Place	41,900,580	41,400,580	500,000

Source: PID

9 District level Projects from 2006 to 2009

District Initiative Projects (DIPs) are funded by Danida, DFID and PSDD (UNDP, DFID and SIDA).

Funding for 2006-2008

Between 2006 and 2008 there were 14 provinces funded by PSDD and 10 by Danida and DFID. The list of provinces and who funded these is below

Danida and DFID funded DIPs:

Kampong Cham	Kampong Speu	Koh Kong	Kratie	Monduliri
Pursat	Ratanakiri	Siem Reap	Sihanoukville	Kep

PSDD funded DIPs:

Banteay Meanchey	Battambang	Kampong Chhnang	Kandal	Phnom Penh
Prey Veng	Svay Rieng	Takeo	Kampong Thom	Preah Vihear
Stung Treng	Kampot	Oddar Meanchey	Pailin	

Funding for 2009

In 2009 there was a change to the number of provinces funded by the two streams. Danida and DFID were still funding the same 10 provinces they had been funding the previous three years, but two more provinces were added *Kampong Thom and Kampot*. Now PSDD funds 12 provinces and Danida and DFID fund 12.

9.1 District Initiative Infrastructure Projects from 2006 to 2009

9.1.1 District Initiative Infrastructure Projects for 2006 to 2008

Date	Project Name	Implementing Agencies	Budget (US\$)	Project Output & Capacity	Number of Beneficiaries
2007	Repair canal of Chroy Snaeng Kabei Leu	Inter-commune	20,250.00		
2008	Preak Prang Dam construction	Inter-commune	7,952.92	12m length and 2.70m high	1677 persons
2008	Smach Kong Dam construction	Inter-commune	8,071.00	150m and 01culvert with gate	630 persons.
2008	Kat O Dam rehabilitation	Inter-commune	9,489.00	210m length and 4m width	3178 persons.
2008	Sre Ngeat Dam rehabilitation	Inter-commune	5,000.00	200m length	510 persons.

9.1.2 District Initiative Infrastructure Projects in 2009

No District Initiative Infrastructure Projects have been implemented in this district for 2009

9.2 District Initiative Service Projects from 2006 to 2009

9.2.1 District Initiative Service Projects for 2006 to 2008

Date	Project Names	Implementing agencies	Budget (US\$)	Project Output & Capacity	Number of Beneficiaries
2007	Dissemination on land management and NRM	District Land	1,344.00		
2007	Training on prevention from illegal fishing activities	Fishery Admin	1,327.00		
2007	Training on prevention from illegal forest activities	Fishery Admin	376.00		
2007	Establish nurseries of trees and fruit trees in communities	Forestry Admin	1,050.00		
2007	Dissemination on hygiene extension and environment in villages	District Land	192.00		
2007	Training on animal raising techniques for cattle and buffaloes	District Agri	530.00		
2007	Training on rice cultivation technique	District Agri	630.00		
2007	Training on impact of chemical fertilizer and pesticide use	District Agri	623.00		
2007	Training on compost making technique	District Agri	672.00		
2008	Family fish raising with pond plastic cover.	Fishery Admin	2,006.00	35 ponds	175 persons
2008	Training on compost making with demonstration.	District AGRI	278.00	4 courses	48 persons
2008	Fishery community strengthening	Fishery Admin	1,601.00	7 communittee	112 persons
2008	Campaign on fishery law illegal	Fishery Admin	1,285.00	16 times	160 persons
2008	Chvea lake pole boundary with culverts for fish reproduction	Fishery Admin	2,792.00	100 culverts and 70 pole	400 persons

9.2.2 District Initiative Service Projects in 2009

Project Name	Sector	Implementing Agency	Budget	Project outputs/ capacities	No. of Beneficiaries		Progress	Remarks on Issues of Progress
					Total	Female		
Training on family fish raising with plastic pond cover	AGR	Fisheries Admin	\$3,173.70	48 ponds	240	130	75%	Already been trained and pond preparation with plastic covering
Training on family fish raising in pond and gardening arround	AGR	Fisheries Admin	\$783.50	12 ponds	60	30	0%	
Cow-buffalo vaccination	AGR	PDA	\$2,357.50	7 communes	3,120	1,116	0%	

9.3 Inter Commune Council Projects in 2008 and 2009

9.3.1 ICC Projects in 2008

No ICC projects in this district at this time

9.3.2 ICC Projects in 2009

No ICC projects in this district at this time

Source: ICC project, Ministry of Interior (DoLA), -UNDP project for Local Governance – DDLG

9.4 Other Projects in 2008 and 2009

9.4.1 RPRP

There are no RPRP projects being implemented in this district or province at this time. The RPRP is only being implemented in Svay Rieng and Prey Veng

9.4.1.1 RPRP Projects from 2006 to 2008

No RPRP projects in this district at this time

9.4.1.2 RPRP Projects in 2009

No RPRP projects in this district at this time

9.4.2 Seth Korma

9.4.2.1 Seth Koma 2007

There are no Seth Korma projects being implemented in this district or province at this time.

Source: UNICEF

9.4.2.2 Seth Koma 2008

There are no Seth Korma projects being implemented in this district or province at this time.

Source: UNICEF

9.4.2.3 Seth Koma 2009

There are no Seth Korma projects being implemented in this district or province at this time.

Source: UNICEF

SECTION D: SERVICES AND ORGANIZATIONS

10 Infrastructure

10.1 Length of and Expenditure on Roads in 2008, by District

Roads	Kratie	Chhlong	Chetrborei	Preaekbrasop	Sambor	Snoul	Kratie
Length of paved road in the district	280	27	70	0	85	73	25
Length of unpaved roads in the district	364	69	96	153	0	0	46
Amount spent on construction of roads in 2008 (\$)	33,727	n/a	33,727	0	n/a	n/a	n/a
Amount spent on repair and rehabilitation of roads in 2008 (\$)	41,867	n/a	0	41,867	n/a	n/a	n/a

Note 1: Please note that these data are not necessarily complete or correct. The data are derived from government agencies at provincial and district level which used different recording systems, did not always have complete data or were, sometimes, less than willing to share their data.

Note 2: Please be aware that these data are incomplete due to the fact that the amounts for the construction, repair and rehabilitation recorded reflect only funds provided by the government, not the contributions by any other parties.

10.2 Scale of and Expenditure on Irrigation in 2008, by District

Irrigation	Kratie	Chhlong	Chetrborei	Preaekbrasop	Sambor	Snoul	Kratie
Number of irrigation schemes operating in 2008	83	47	n/a	10	18	3	5
Total nr of hectares under irrigation in dry season 2008	7,388	2,881	1,489	1,671	135	315	897
Total funds spent in 2008 on construction of irrigation systems (\$)	10,200	0	n/a	0	n/a	10,200	n/a
Total funds spent in 2008 on rehabilitation/repair of irrigation systems (\$)	465,226	22,218	n/a	443,008	n/a	0	n/a
Total funds spent in 2008 on operation and maintenance (\$)	14,985	0	n/a	14,985	n/a	0	n/a

Note 1: Please note that these data are not necessarily complete or correct. The data are derived from government agencies at provincial and district level which used different recording systems, did not always have complete data or were, sometimes, less than willing to share their data.

Note 2: Please be aware that the data above are incomplete as these only reflect funds provided by the government, not the contributions by farmers or other parties.

10.3 Power Supply in 2008, by District

Electricity	Kratie	Chhlong	Chetrborei	Preaekbrasop	Sambor	Snoul	Kratie
Total number of electricity connections to households	7,852	1,542	0	1,181	400	850	3,879
Total number of electricity connections to agencies, companies, organizations	12	n/a	0	2	5	5	n/a
Total volume in KWh of electricity consumed last in 2008	843,973	n/a	0	40,973	36,000	800,000	n/a
Total amount collected from users for consumed electricity (in KR) (\$)	176,643	n/a	0	32,643	0	144,000	n/a
Per capita electricity consumption in 2008 in Kwh	13	n/a	0	48	15	250	n/a

Note 1: Please note that these data are not necessarily complete or correct. The data are derived from government agencies at provincial and district level which used different recording systems, did not always have complete data or were, sometimes, less than willing to share their data.

Note 2: These data only record electricity provided by electricity companies and does not include homes powered by generators or batteries (for this information see Section B: General Profile, Part 1: General Information; table 1.3.1 and chart 1.3.4).

Note 3: In most provinces electricity is only provided through town-based networks

Note 4: Per capita consumption is calculated by dividing the total volume of electricity produced in 2008 by the number of people living in each district as per the 2008 census (for the provincial data it is calculated against the number of people living in the province)

11 Health Facilities

Please note that the Operational District (health) boundaries are different to the administrative district boundaries. Therefore the data provided here shows the facilities, staff, NGOs etc in each Operational District within the province NOT the administrative district.

Acronyms

Com Cov	Commune Covered	MW2	Secondary Midwives
CPA	Complementary Package of Activities	NU1	Primary Nurse
Dr	Doctor	NU2	Secondary Nurse
FDH	Former District Hospital	OD	Operational District
HC	Health Center	Others	Other Staff
HC (NB)	Health Center no building	PHD	Provincial Health Department
HP	Health Post	Pop 04-05	Population Covered 2004 or 2005
MA	Medical Assistant	RH	Referral Hospital
MPA	Minimum Package of Activities	Vil Cov	Village Covered
MW1	Primary Midwives	VIL-HC	Distance from Village to Health Center

11.1 Health Facilities in the Province, by Operational District

Kratie	OD	RH	HC	HP
Chhlong	1	1	10	3
Kratie	1	1	12	5
Total	2	2	22	8

11.2 Health Facilities and Staff in the province, by Operational District

This table shows health facilities, staff and coverage of health facilities in each operational district.

No	Facility Name	Type	Class	Dr	Ma	Nu2	Nu1	Mw2	Mw1	Others	Com Cov	Vil Cov	Pop. 04-05
Chhlong													
1	Chambak	HC	MPA	0	0	2	2	1	2	2	2	11	15,886
2	Chroy Thma	HC	MPA	0	0	1	1	1	2	2	4	11	15,471
3	Damrei Phong	HC	CPA	0	0	0	2	0	0	4	2	6	3,348
4	Daun meas	HP	None+MI	0	0	0	0	0	0	0	1	1	2,202
5	Kanhchor	HC	MPA	0	0	1	3	2	1	1	3	10	14,508
6	Khsach Andet	HC	MPA	0	0	2	2	2	1	1	2	7	19,998
7	Khsem	HC	MPA	0	0	2	2	1	0	4	2	9	7,291
8	Pongro	HC	MPA	0	0	1	1	1	0	4	3	8	14,821
9	Preaek Prasob	FDH	CPA+MPA	0	2	3	5	1	2	4	1	9	12,353

District Data Book 2009: Development Plans and Projects

No	Facility Name	Type	Class	Dr	Ma	Nu2	Nu1	Mw2	Mw1	Others	Com Cov	Vil Cov	Pop. 04-05
10	Snuol	FDH	CPA+MPA	1	2	6	6	4	0	8	3	20	24,506
11	Srae Roneam	HP	None+MI	0	0	0	0	0	0	0	1	1	1,084
12	Stueng Thum	HP	None+MI	0	0	0	0	0	0	0	1	1	1,122
Total:				1	4	18	24	13	8	30	25	94	132,590
Kratie													
1	Ta Mau	HC	MPA	0	0	1	3	1	2	1	2	11	13,261
2	Bos Leav	HC	MPA	0	0	1	3	0	1	4	2	13	10,698
3	Chrouy Banteay	HC	MPA	0	0	2	2	2	1	2	1	7	9,218
4	Kantuot	HC	MPA	0	0	1	3	0	2	2	3	20	16,617
5	Ou Krieng	HC	MPA	0	0	1	2	0	1	3	4	21	14,463
6	Ou Ruessei	HC	MPA	0	0	1	4	3	2	1	3	12	18,197
7	Rakar Kandal	HC	MPA	0	1	0	3	2	3	1	2	7	12,264
8	Sambo	FDH	CPA+MPA	0	1	2	5	1	1	5	4	21	20,157
9	Sandan	HC	MPA	0	0	1	6	0	0	4	4	13	14,476
10	Saob	HC	MPA	0	0	2	3	0	0	3	3	10	12,012
11	Svay Chreah	HC	MPA	0	0	2	1	1	0	2	2	9	7,803
12	Thma Krae	HC	MPA	0	0	1	7	2	0	1	3	7	12,377
Total:				0	2	15	42	12	13	29	33	151	161,543
Total All				1	6	33	66	25	21	59	58	245	294,133

Source: MEDiCAM – Infrastructure - (http://www.medicam-cambodia.org/hsi/health_system/srch/index.asp?cboLcn=6&cmdSearch=Search&cboCHName=&cboType=)

11.3 Deliveries in 2007 in the Province, by Operational District

OD	Deliveries	Deliveries at home		Deliveries	Total deliveries	Total deliveries
	at HC	By Health Staff	ByTBAs	at RH	by Health Staff	by health staff and TBAs
Chhlong	47	592	656	232	871	1527
Kratie	199	504	1304	558	1261	2565
<i>Sub-total</i>	<i>246</i>	<i>1096</i>	<i>1960</i>	<i>790</i>	<i>2132</i>	<i>4092</i>

Source: MoH, Annual Statistics 2007

12 Education³

12.1 Schools, Classes, Students, Staff, for all levels, for 2007/2008 by District

District	Number of Schools	Disadv. Schools	Number of Classes	Classes in Pagoda	Enrollment		Repeaters		Teaching Staff		Non-Teaching Staff		Total Staff	
					Total	Girl	Total	Girl	Total	Female	Total	Female	Total	Female
Chhlaung	41	1	357	0	12,802	6,162	919	390	398	223	75	19	473	242
Kratie	100	2	645	2	22,559	10,572	1,833	763	729	399	146	51	875	450
Prek Prasap	66	0	449	0	15,214	7,301	1,423	561	542	299	96	21	638	320
Sambo	57	1	360	0	12,676	6,164	1,401	624	238	84	29	8	267	92
Snuol	54	1	302	7	12,182	5,663	1,449	643	200	58	22	4	222	62
Whole Province	318	5	2,113	9	75,433	35,862	7,025	2,981	2,107	1,063	368	103	2,475	1,166
- Urban Area	100	2	645	2	22,559	10,572	1,833	763	729	399	146	51	875	450
- Rural Area	161	2	1,108	7	40,198	19,126	3,791	1,594	1,140	580	193	44	1,333	624
- Remote Area	57	1	360	0	12,676	6,164	1,401	624	238	84	29	8	267	92

12.2 Characteristics of Schools and School Principals for 2007/2008 by Commune

Commune	Number of Schools				2 - Shift	Floating	Schools	Attached	Schools Without		Characteristics of School Principals (Incharge)			
	Pre-Sch	Primary	College	Lycee	Schools	Schools	in Pagoda	Pre-Sch	Water Sup.	Latrine	Avg. Age	Avg. Service	U.Sec+ Ed.	Female
Chambak	3	6	0	1	4	0	5	3	4	3	52.1	24.1	1	1
Chrouy Banteay	1	5	1	0	6	0	2	1	3	1	46.7	21.0	1	1
Kampong Kor	0	4	1	0	3	0	2	0	3		47.4	24.0	0	1
Kaoh Ta Suy	0	2	1	0	1	0	2	0	0		36.8	21.0	1	1
Preaek Prasab	7	10	0	1	4	0	7	7	9	7	47.3	24.2	2	5
Ruessei Kaev	3	3	1	0	3	0	4	3	2	1	57.7	25.1	0	0
Saob	1	6	1	0	4	0	2	1	4	1	46.3	22.1	1	3
Ta Mau	1	6	1	0	4	0	2	1	5	4	49.2	22.9	0	0

³ All the data for section 12 comes from the Ministry of Education, Youth and Sport (MoEYS)

12.3 Enrolment by Level of Education, 2006/2007 by Commune

Commune	School	Pre school		Primary School		Lower Secondary School		Upper Secondary School		Enrolment	
		Total	Female	Total	Female	Total	Female	Total	Female	Total	Female
Chambak	10	159	86	1208	578	746	378	705	310	2818	1352
Chrouy Banteay	7	32	17	1956	959	195	102	0	0	2183	1078
Kampong Kor	5	0	0	972	475	285	127	0	0	1257	602
Kaoh Ta Suy	2	0	0	259	118	0	0	0	0	259	118
Preaek Prasab	17	221	114	2193	1031	621	272	278	130	3313	1547
Ruessei Kaev	7	118	68	1217	559	443	205	0	0	1778	832
Saob	8	25	15	1554	770	756	350	0	0	2335	1135
Ta Mau	8	30	17	1340	663	369	189	0	0	1739	869

12.4 Enrolment by Level of Education, 2007/2008 by Commune

Commune	School	Pre school		Primary School		Lower Secondary School		Upper Secondary School		Enrolment	
		Total	Female	Total	Female	Total	Female	Total	Female	Total	Female
Chambak	10	176	91	1180	567	714	368	823	395	2893	1421
Chrouy Banteay	7	35	15	1890	905	322	175	0		2247	1095
Kampong Kor	5	0	0	901	431	318	148	0		1219	579
Kaoh Ta Suy	3	0	0	228	106	52	20	0		280	126
Preaek Prasab	18	247	125	2030	966	607	304	330	149	3214	1544
Ruessei Kaev	7	124	56	1104	518	390	185	0		1618	759
Saob	8	21	12	1565	770	528	220	0		2114	1002
Ta Mau	8	35	18	1270	595	324	162	0		1629	775

12.5 Aspects of Enrolment for 2007/2008 by Commune

Commune	% Repeaters (Total)			% Over-age Enrollment (Total)			% Repeaters (Girl)			% Over-age Enrollment (Girl)		
	Primary	L.Sec.	U.Sec.	Primary	L.Sec.	U.Sec.	Primary	L.Sec.	U.Sec.	Primary	L.Sec.	U.Sec.
Chambak	16.1	1.8	3.2	10.0	45.4	47.4	12.7	1.1	3.0	8.6	42.1	36.5
Chrouy Banteay	14.1	0.0	0.0	20.1	39.8	0.0	11.5	0.0	0.0	18.6	36.0	0.0
Kampong Kor	10.4	13.5	0.0	21.2	44.3	0.0	7.2	10.8	0.0	18.3	40.5	0.0
Kaoh Ta Suy	13.6	0.0	0.0	15.4	0.0	0.0	7.5	0.0	0.0	15.1	0.0	0.0
Preaek Prasab	13.6	0.5	0.0	18.0	37.1	39.7	11.7	0.0	0.0	16.6	33.9	30.9
Ruessei Kaev	9.2	0.3	0.0	19.7	43.8	0.0	6.8	0.5	0.0	17.6	39.5	0.0
Saob	9.6	0.4	0.0	19.3	51.5	0.0	8.2	0.0	0.0	18.2	46.4	0.0
Ta Mau	17.2	2.2	0.0	21.1	52.8	0.0	16.8	1.2	0.0	21.7	45.1	0.0

12.6 School Buildings for all schools in the District for 2007/2008, by Commune

Commune	Total Number of		Concrete/Brick Structure		Wooden Structure		Bamboo Structure		New Buildings		Buildings Without Good		
	Buildings	Rooms	Buildings	Rooms	Buildings	Rooms	Buildings	Rooms	Repaired	Constructed	Floor	Roof	Wall
Chambak	23	82	17	63	6	19	0	0	1	2	6	7	2
Chrouy Banteay	13	49	7	33	6	16	0	0	1	1	4	0	0
Kampong Kor	8	32	6	25	2	7	0	0	0	1	1	1	1
Kaoh Ta Suy	4	16	4	16	0	0	0	0	0	0	0	0	0
Preaek Prasab	24	99	15	68	9	31	0	0	0	0	8	5	4
Ruessei Kaev	19	58	17	54	1	1	1	3	4	0	2	0	1
Saob	16	61	8	35	8	26	0	0	0	0	4	2	2
Ta Mau	11	43	7	31	4	12	0	0	0	0	1	1	1

12.7 Conditions of Classrooms and Existence of Separate School Office and Library, by Commune

Commune	Number of Class rooms	Number of Classrooms			Classrooms Without Good			Number of Furniture needed				Schools with Separate	
		in Pagoda	New Repaired	New Constr.	Floor	Roof	Wall	Desks	Chairs	Black-board	Teacher Table	Office	Library
Chambak	68	0	3	13	21	25	8	36	1	1	1	6	4
Chrouy Banteay	36	0	3	5	9	0	0	60	60	3	5	4	2
Kampong Kor	29	0	0	5	3	3	3	46	30	5	0	1	1
Kaoh Ta Suy	9	0	0	0	0	0	0	0	0	0	0	0	1
Preaek Prasab	84	0	0	0	24	16	12	100	20	5	192	6	5
Ruessei Kaev	46	0	13	0	9	0	3	0	0	0	0	4	4
Saob	45	0	0	0	18	10	10	20	2	2	3	7	2
Ta Mau	32	0	0	0	3	3	3	75	60	3	3	4	1

12.8 Community Participation and Financing across all schools in the District for 2007/2008 by Commune

Commune	Parent Association				Comm. Teachers	Teaching Monks	PAP Fund (Riel)		Number of Schools Obtaining Funds from				
	Exists	Held Meet	Total	Female			per Student	per School	Sch. Income	Community	Gvt. For building	Abroad	IOs/NGOs
Chambak	10	10	8	2	0	0	13,195	3,898,494	0	3	0	0	0
Chrouy Banteay	7	7	7	1	0	0	7,029	2,749,800	0	3	1	0	1
Kampong Kor	5	5	5	1	0	0	13,327	2,554,333	0	0	0	0	0
Kaoh Ta Suy	2	2	3	1	0	0	4,905	635,250	0	0	0	0	0
Preaek Prasab	13	13	5	1	0	0	7,314	1,556,414	0	1	0	0	1
Ruessei Kaev	5	5	13	5	0	0	6,740	2,237,800	0	3	0	1	2
Saob	7	7	5	1	0	0	10,944	3,336,507	0	1	0	0	0
Ta Mau	7	7	4	1	0	0	11,580	3,214,620	0	0	0	0	1

12.9 Percentage Student Flow Rates and Graduation by level 2006/2007, by Commune

Commune	Primary Level (Grades 1-6)			Lower Secondary Level (Grades 7-9)			Upper Secondary Level (Grades 10-12)			Successful Candidates		
	Promotion	Repetition	Dropout	Promotion	Repetition	Dropout	Promotion	Repetition	Dropout	Grade 6	Grade 9	Grade 12
Chambak	78.4	15.7	5.9	85.4	1.7	12.9	78.9	3.7	17.4	162	194	100
Chrouy Banteay	75.8	13.6	10.6	79.5	0.0	20.5	0.0	0.0	0.0	203	0	0
Kampong Kor	85.9	9.7	4.4	61.8	15.1	23.2	0.0	0.0	0.0	141	44	0
Kaoh Ta Suy	84.6	12.0	3.5	0.0	0.0	0.0	0.0	0.0	0.0	52	0	0
Preaek Prasab	77.7	12.6	9.8	80.5	0.5	19.0	86.7	0.0	13.3	264	147	70
Ruessei Kaev	86.9	8.4	4.8	80.1	0.2	19.6	0.0	0.0	0.0	188	95	0
Saob	84.7	9.7	5.7	57.4	0.3	42.3	0.0	0.0	0.0	179	82	0
Ta Mau	74.4	16.3	9.3	77.2	1.9	20.9	0.0	0.0	0.0	142	75	0

13 Staff and Resources at the District

This chapter presents data from the District Information System, collected around the middle of 2009 unless otherwise specified.

13.1 District Councilors elected in 2009

Name	Sex	Year of Birth	Function	Phone
សំ គុយហេង	M	1942	Chairperson of The Council	012-486 212
ម្សៅ ហេង	M	1942	Councillor	011-469 898
ម៉ៅ មី	M	1938	Councillor	085-559 865
តាន់ ជិនអ៊ាត	M	1950	Councillor	011-241 549
ជីវ គឹមឆេង	F	1942	Councillor	011-287 476
ហ៊ាន រិន	M	1948	Councillor	011-776 358
ភិន ហម	M	1940	Councillor	011-277 954
តាន់ ហុងលីម	M	1939	Councillor	011-786 262
ឃុន ឆោម	M	1949	Councillor	011-370 345
ណាស់ លីមនៃ	M	1946	Councillor	092-596 443
គឹម យ៉ែន	M	1942	Councillor	092-638 518
យក់ ឡី	M	1958	Councillor	011-552 669
គឹម សុខខេង	F	1961	Councillor	089-842 292
ស៊ីន សាអ៊ុន	M	1948	Councillor	089-257 917
ពេជ សុខឿន	F	1966	Councillor	099-246 127

13.2 Committees of the Council

Please note at the time of producing the district data books the composition of the committees was not known for all district councils and therefore data were not available for 13.2.1, 13.2.2, 13.2.3.

13.2.1 Technical Facilitation Committee

13.2.2 Women's and Children's Affairs Committee

13.2.3 Procurement Committee

13.3 Board of Governors

Name	Sex	DoB	Function	Salary Level	Body	Phone
វ៉ា ថន	M	1974	District Governor	ក.ព.១០	High Ranking Civil Servant	012-329 496
អ៊ាន ណារម្យ	M	1956	District Deputy Governor	ខ.១.៤	Medium Civil Servant	097-969 5933
គង់ ឈីមហូ	F	1968	District Deputy Governor	ខ.ព.៧	Medium Civil Servant	011-267 815
កែម ហៀង	M	1966	District Deputy Governor	ប.ព.៧	Administrative Agent	092-560 934

13.4 Offices under Sala Krong, Sala Srok and Sala Khan

Office Name	Chief		Deputy Chief		No. of Staff				Office Area (m2)	No of vehicle (public or program)	
					State		Contract			vehicle	moto
	M	F	M	F	M	F	M	F			
District/ Khan Cabinet	0	0	1	0	1	0	0	0	0	0	0
Adminnistration Office	0	1	0	0	3	2	0	0	0	0	0
Economy Office	1	0	0	1	2	2	0	0	0	0	0
Social Affair Office	0	1	0	0	2	2	0	0	0	0	0

13.5 Municipality/District/Khan line offices

Office Name	Chief		Deputy Chief		No. of Staff				Office Area (m2)	No of vehicle (public or program)	
					State		Contract				
	M	F	M	F	M	F	M	F		vehicle	moto
District/ Khan Police Headquarter	1	0	5	0	144	4	0	0	182	0	11
District/ Khan Military Police Headquarter	1	0	2	0	2	0	0	0	292	0	0
District/ Khan Military Subregion	1	0	3	0	13	0	0	0	265.25	0	0
Planning Office	0	0	1	0	0	0	0	0	0	0	1
Women Affairs Office	0	0	0	1	0	0	0	0	0	0	0
Education Office	1	0	2	0	300	327	0	2	84.5	0	0
Agriculture Office	1	0	0	0	1	1	0	0	66	0	1
Culture Office	1	0	0	0	0	1	0	0	0	0	0
Cult and Religion Office	1	0	0	0	0	0	0	0	0	0	0
Information Office	0	0	1	0	0	0	0	0	0	0	0
Lan Management Office	0	0	1	0	6	0	0	0	70	0	0
Tax Unit	0	0	0	0	1	0	0	0	0	0	0

13.6 Properties and Equipment of District Administration

13.6.1 Buildings

Description	Unit	Number	Remark
Office building type			
- Concrete	building	1	
- Wood	building	2	
- Mixed	building	1	
Total floor space	m2		
- Concrete	m2	134.3	
- Wood	m2	270	
- Mixed	m2	86.4	
Building condition			
- Concrete	%	50	
- Wood	%	30	
- Mixed	%	50	
Office reserved land area	m2	35,000	
Total office land area	m2	35,000	

13.6.2 Means of Transport available at the District Administration

Description	Unit	Number	Remark
Vehicle (type, size and condition)	Vehicle	0	
Motorcycle (type, size and condition)	Motor	0	

13.6.3 Equipment in District Offices

Description	Unit	Number	Remark
Generator	per set	0	
Photocopy machine at the office	per set	0	
Private photocopy machine at the district town	place	0	
Telephone network (mobile line service)	network	0	
Telephone network (land line service)	network	0	
Fax (include Fax number)	per set	0	
Computer	per set	0	
Printer	per set	0	
Scanner	Per set	0	
Number of computers those can access Internet and email services in the municipality/ district/khan office (including the technical line offices (please provide the email address)	set	0	
Typewriters (including the technical line offices)	per set	1	
Staff of Municipality/district/khan office can use computer	person	3	

13.6.4 Equipment and facilities at the District Town

Description	Unit	Number	Remark
Availability of electricity at noon	Nr Hours	0	
Private internet and email services in the municipality/ district/khan town.	place	0	

13.7 Registered Revenue of the District Administration in 2008⁴

Sources of Revenue	Revenue Collecting Agency	Estimated annual revenue (In Riels)
Tax on business	District/ Khan Taxation Unit	2,280,000
Shopping Store	District/ Khan Taxation Unit	1,540,000
Vehicle Tax	District/ Khan Taxation Unit	2,083,500
Tamp Tax	District/ Khan Taxation Unit	1,000,000
Slaughter Hosue	Agriculture Office	3,960,000
Patent	District/ Khan Taxation Unit	3,698,000
Transportation Tax	District/ Khan Taxation Unit	29,824,000

13.8 Services in the District

13.8.1 Public Sector Services

Type of Infrastructure/services	Unit	Number	
		Public	Private
Schools			
Pre-school	room	23	0
Primary School	room	304	0
Secondary school	room	91	0
High School	room	24	0
University	room		
Health			
Health post	place	2	0
Health center	place	5	0
Referral Hospital	bed		

13.9 Civil Society Organizations active in the District

13.9.1 NGOs, Associations, Programs and Projects

Name	Abbr.	Sector Activities	No. of Target Communes	No. of Target Villages	Office in District
Ofarm	None	កសិកម្ម	2	16	Yes
NA	None	សុខាភិបាល	2	16	Yes
District Initiative Program	DIP	មិនមាន	0	0	Yes
NA	None	ធនធានធម៌ជាតិ	3	15	Yes

13.9.2 Political Parties active in the Municipality, District and Khan

Name	Abbr.	Office in District
Cambodian People Party	CPP	Yes
FUNCINPEC Party	FUNCINPEC	Yes
Human Rights Party	HRP	Yes
NRP	NRP	Yes
SAM RAINSY Party	Sam Rainsy Party	Yes

⁴ Please note that the data in this table are at best estimates. If the table appears blank it does not mean there is no revenue, just that the data have not been recorded/entered.

13.10 Private Sector Organizations

13.10.1 Registered Companies in 2008, by District

On private sector at commune and/or district level	Kratie	Chhlong	Chetrborei	Preaekbrasop	Sambor	Snoul	Kratie
Businesses and Companies							
Number of registered agricultural enterprises (except family farms)	1	0	0	0	0	1	0
Number of registered shops, restaurants, transporters and other services	401	n/a	n/a	n/a	n/a	279	122
Number of manufacturing companies	18	6	0	10	0	2	0
Number of registered forestry enterprises	25	6	3	1	8	7	0
Number of registered mining companies	1	0	0	0	0	1	0
Number of financial institutions	8	4	0	1	1	2	0
Number of other commercial institutions	1	n/a	n/a	n/a	n/a	1	n/a
Estimated number of informal enterprises (not registered)	245	n/a	n/a	n/a	n/a	245	n/a
Employment							
Number of people employed in 2008 by companies or any other enterprises	1,437	n/a	n/a	37	n/a	1,400	n/a
Investment							
Amount invested in 2008 by private sector (\$)	n/a	n/a	n/a	n/a	n/a	n/a	n/a
Markets							
Number of markets, operating at least weekly	25	8	10	3	1	1	2

Note: These data are not comprehensive as different companies and business are registered with different departments and not all departments were able or willing to provide detailed information. The number of informal enterprises reflects a rough estimate, made at provincial level and could not be verified.

Source: Unofficially collected at Provincial Level

13.10.2 Farmers in 2008, by District

Credit	Kratie	Chhlong	Chetrborei	Preaekbrasop	Sambor	Snoul	Kratie
Volume of credit provided to farmers in 2008 (\$)	-	n/a	n/a	n/a	n/a	n/a	n/a
Number of farmers receiving credit in 2008	-	n/a	n/a	n/a	n/a	n/a	n/a
Volume of credit provided to companies in 2008 (\$)	-	n/a	n/a	n/a	n/a	n/a	n/a

Note: Please note that these data are not necessarily complete or correct. The data are derived from government agencies at provincial and district level which used different recording systems, did not always have complete data or were, sometimes, less than willing to share their data.

Source: Unofficially collected at Provincial Level

SECTION E: POVERTY DATA

14 Data on Poverty

14.1 Predicted Poverty Rates for 2009, by commune

The **Predicted Family Poverty Rate** is based on a statistical model (robust multilevel mixed effect regression) at village level developed by the NCDD M&E Unit and uses CDB data for making an estimate of the predicted poverty rate (this is: *the portion of total families in the district or commune who are expected to be poor*) for the following year using current year data.

The basis for this predicted poverty rate also uses IDPoor (a project of the Ministry of Planning with technical assistance provided by GTZ) data

Commune	2004	2009
Chambak	36.60%	31.80%
Chrouy Banteay	45.10%	40.70%
Kampong Kor	35%	32.80%
Kaoh Ta Suy	37.80%	30.40%
Preaek Prasab	40.20%	34.40%
Ruessei Kaev	34.60%	30%
Saob	45.70%	41.60%
Ta Mau	37.90%	33.80%

14.2 Poverty data from survey

14.2.1 Identification of Poor Households Program (IDPoor)

The Ministry of Planning IDPoor Program has developed standardized Procedures for Identification of Poor Households in rural areas. These Procedures are implemented using a participatory and consultative process by sub-national government structures and community representatives.

The IDPoor Program is managed by the Ministry of Planning (MOP), in cooperation with the Ministry of Interior's Department of Local Administration (DOLA). The program is supported by the Federal Republic of Germany, with technical assistance provided by German Technical Cooperation (GTZ). In 2009, AusAID also provided funding support to the Program.

Objective

The IDPoor Program aims to implement the Procedures for Identification of Poor Households in rural areas as widely as possible, in order to provide data on the level of poverty of areas and households that can be used by a large range of institutions and organizations for targeting services and development assistance to poor areas and poor households.

Coverage: During 2007, 2008 and 2009 the IDPoor Procedures have been implemented in 18 provinces (with partial or complete coverage), covering a total of around 7000 rural villages. The MOP and a number of NGO partners who are Health Equity Fund Operators have collaborated in collecting this data from different areas.

Categorization: Identified poor households are classified under two poverty categories: Poor Level 1 (very poor), and Poor Level 2 (poor). Households are classified based on data collected using a standard questionnaire, together with consideration by villagers of these households' special circumstances.

Further information: Please go to the IDPoor Program webpage at www.mop.gov.kh/Projects/IDPoor/tabid/154/Default.aspx

Commune	Poor 1 HHs	Poor 2 HHs	Poor 1 HHs	Poor 2 HHs	Total Poor 1&2 HHs	Total HHs in Commune
Chambak	118	295	6.6%	16.4%	23.0%	1794
Chrouy Banteay	417	314	20.7%	15.6%	36.3%	2012
Kampong Kor	289	327	24.7%	27.9%	52.6%	1171
Kaoh Ta Suy	59	32	16.2%	8.8%	25.0%	364
Preaek Prasab	640	470	24.9%	18.3%	43.2%	2572
Ruessei Kaev	189	163	13.5%	11.6%	25.1%	1405
Saob	496	368	26.8%	19.8%	46.6%	1854
Ta Mau	336	440	22.4%	29.4%	51.8%	1497